



Your guide to waste
and recycling services





INTRODUCTION

Melton City Council and residents play an important role in reducing and managing waste within the City of Melton, and as our population grows, so too will the volume of waste generated.

Residents are provided with a range of services to assist with managing waste responsibly and sustainably.

This guide provides a summary of these services which are available to both tenants and owners.



To access or obtain more information on these services, please contact Council's Waste Services team on 9747 7200 or visit our website: melton.vic.gov.au/waste

DIVERTING WASTE FROM LANDFILL



We are committed to offer services to help you to reduce, reuse and recycle waste.

With the three-stream kerbside service in place, the way we recycle has changed for the better. When you sort your recycling and FOGO bins correctly, your waste becomes a resource by turning them into new products. This is one of the ways in which you can prevent truckloads being contaminated and sent to landfill. Below are some disposal options for the common household items:

E-WASTE & BATTERIES

E-waste and batteries are not accepted in any kerbside bins. You can drop any electronic waste and batteries off at the Melton Recycling Facility.



CLOTHING, SHOES, AND TOYS

Give clothing, shoes, toys and other household items that are still in good condition a second life. Donate to your local op shops or Resale shop at our Melton Recycling Facility.



OTHER DISPOSAL OPTIONS

Officeworks stores also take some e-waste items for recycling. Household batteries can also be recycled in specially marked bins at the major supermarkets such as Coles, Woolworths and Aldi.



CONTAINER DEPOSIT SCHEME

From November 2023, you can return empty drink containers to a refund collection point and receive a 10-cent refund for every eligible container you return. For more information, visit vic.gov.au/container-deposit-scheme



For further information on how you can reduce your waste at home check Councils A-Z of waste guide melton.vic.gov.au/wasteAZ or contact our Green Living Officer, resourceeducator@melton.vic.gov.au



WASTE SERVICE BIN OPTIONS AND ENTITLEMENTS



BIN OPTIONS

Residential properties eligible for a waste service can access Council's three waste stream service. With a choice of three different bin options for the same flat fee each year*. In addition to the kerbside collection service residents can access up to two waste disposal entitlements each year:

Two hard waste collections up to 3m³ from within your property boundary. Bookings essential. Visit our Hard waste webpage.

OR

Two visits to the Melton Recycling Facility with a car or trailer up to 1m³. Access for ratepayers is available by scanning your rates notice or quoting your Rates Assessment Number. Residential tenants can access these options by applying in advance. Proof of residency is required.

OR

One visit to the Melton Recycling Facility and one At Home hard waste collection.

Refer Council's website for ability to view, download and print yearly Waste Calendar.

* For information on current waste charge fees and charges please visit melton.vic.gov.au/binoptions

BIN COMBINATION

Option	WASTE red lid	RECYCLE yellow lid	Food and Green Organics (FOGO) green lid
A	120L	240L	240L
C	120L	240L	120L
E	120L	240L	Not provided

Council undertakes collections on public holidays with the exception of Good Friday and Christmas Day. On these days the collection will be undertaken the following day.



HAZARDOUS WASTE



HAZARDOUS WASTE AND CHEMICALS

Unwanted, toxic household chemicals can harm your family and your pets, add fuel to a house fire and release toxic fumes.

They can pollute the environment now and into the future so it's important to dispose of them correctly. Please do not put these chemicals in your red bin so we can keep them out of landfill.

DETOX YOUR HOME

The State Government runs a program throughout the year for the safe disposal of many chemicals, poisons, glues and solvents.

Each council hosts one collection per year, but anyone can use any event across Victoria.

A free service to safely dispose of unwanted toxic household chemicals is provided by Sustainability Victoria.

There is no restriction on the amount of household chemicals you can dispose of through this service.

However, items used for farming, commercial or industrial purposes will not be accepted.

For more information on days and times, please visit sustainability.vic.gov.au

E-WASTE

Council is helping residents comply with E-waste disposal requirements by accepting old electronics at the Melton Recycling Facility for FREE*. (Charges apply for non-residents)

E-waste (or electronic waste) is growing three times faster than standard local waste.

To help protect the environment from potentially hazardous materials, recovered e-waste is carefully disassembled and suitable components are shredded, sorted and repurposed to be used in new batteries, electronics, homewares and more.



For more information please visit melton.vic.gov.au/wasteAZ

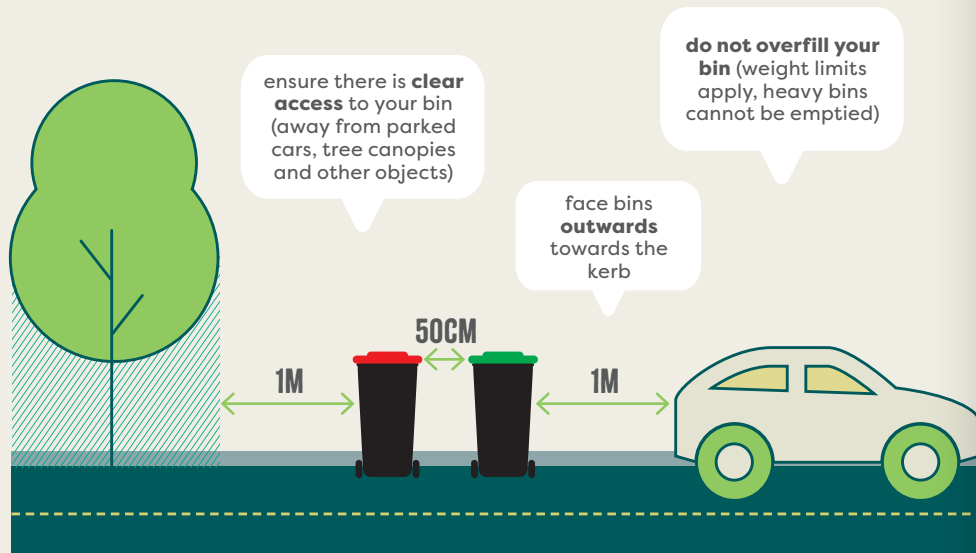
YOUR BIN COLLECTION SERVICE

Red and yellow bins are provided to residents for the safe and easy disposal of general household waste and recyclable materials.

Residents can also opt to have a green bin to dispose of all food and garden waste, such as plate scrapings and leftovers, along with grass clippings, small branches, leaves and small logs (no more than 30cm in diameter). Additional bins can be provided for a fee.

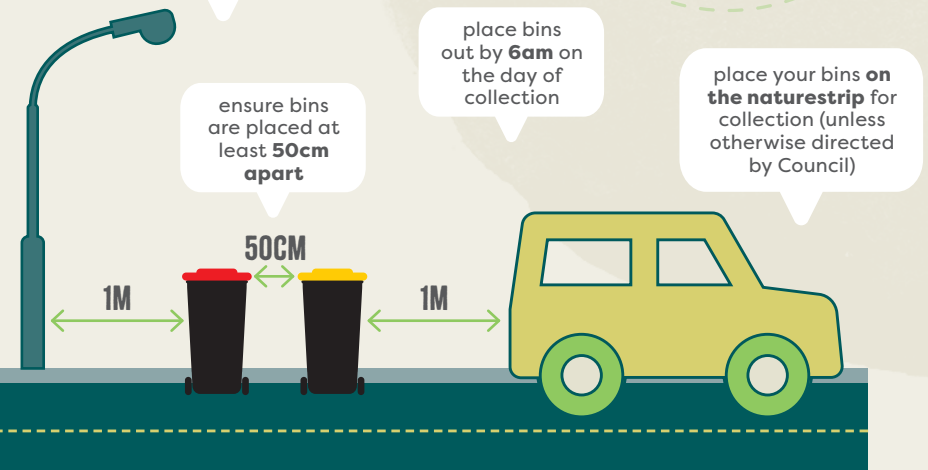
HOW TO PRESENT YOUR BINS FOR COLLECTION

IN ORDER TO HAVE YOUR BINS COLLECTED, PLEASE:



PLEASE ALSO REMEMBER TO BRING YOUR BINS BACK ONTO YOUR PROPERTY WITHIN 24 HOURS OF BEING EMPTIED.

Do not put unacceptable items into your bins. For more information visit melton.vic.gov.au/waste



For further information about bin sizes, fees and charges please visit melton.vic.gov.au/waste



For details on your collection day or to download a copy of the bin calendar, visit melton.vic.gov.au/bin-day



YOUR RED BIN (LANDFILL WASTE)



The contents of your red bin go directly to landfill – the least preferred option for waste disposal. Once waste goes to landfill, it remains there to decompose or turn into tiny particles – for materials such as hard plastics, this can take thousands of years.

While our community's recycling efforts are on the rise, City of Melton residents are still disposing of about 35,000 Tonnes of household waste each year* which significantly increases the production of greenhouse gases such as carbon dioxide and methane.

Recent waste audits undertaken by Council have found that an average City of Melton's household red bin contains 11 per cent recyclable material and just over 50 per cent food and garden waste.

To help divert waste from landfill, your red bin should only contain household waste that cannot be recycled or reprocessed through the yellow or green bins.

* Figures accurate as at 30 June 2023; sourced from City of Melton's waste collection records.

All the contents of your red bin must be **bagged**

Do not overfill your bin as this can lead to spillage and littering

Please check the list of red bin **do's and don'ts** to make sure you're disposing of your waste correctly

THE FOLLOWING ITEMS ARE NOT ACCEPTED IN YOUR RED BIN

BUILDING MATERIALS ❌ 	PAINT ❌ 	MOBILE PHONE ❌
MOTOR OIL ❌ 	BATTERIES ❌ 	RECYCLING ❌

For a detailed list please visit melton.vic.gov.au/wasteAZ



GOOD TO GO

WASTE

General household waste.



You can also put vacuum cleaner bags, bread tags and polystyrene in your red bin. Please remember to wrap broken glass, mirrors or ceramics in newspaper.

To make sure you're disposing of household waste in the best way, remember the following items shouldn't go in your red bin:

- ❌ Recyclable materials (aluminium cans and foil, glass bottles and jars, plastic bottles and containers, paper and cardboard)
- ❌ Building materials
- ❌ Concrete and rocks
- ❌ Electronic waste
- ❌ Paint and other household chemicals
- ❌ Green waste (food scraps, garden clippings, egg shells and bones) if a green bin service is provided at your property
- ❌ Batteries
- ❌ Gas bottles
- ❌ No hot ash or liquids

TOP TIP

Electronic waste—any item with a cord or battery—**e-waste cannot go into ANY kerbside bin**

You **can** dispose of your electronic waste for FREE at the Melton Recycling Facility, Cobblebank.

YOUR YELLOW BIN (RECYCLING)



The contents of your recycling bin are taken to a specialist recycling facility where they are sorted into material streams and sold to the manufacturing industry to create new products. Making products from recycled material uses less water and energy than making something from new materials and helps to conserve valuable natural resources.

City of Melton residents recycle over 14,000 Tonnes of household recyclables each year* and our recycling rates are on the rise.

However, recent waste audits found that more than a third of the average yellow bin in the City of Melton contained items that could not be recycled, including bagged garbage and food waste. This material can cause major processing issues at the recycling facility. To help maximise the amount of material being recycled, it is important that you only use the yellow bin for accepted recyclable material.

* Figures accurate as at 30 June 2023; sourced from City of Melton's waste collection records.

Items in your recycling bin **must be empty of all food and liquids**

No kitchenware, bakeware, pots, crockery or cutlery

Keep it loose.
No bags

THE FOLLOWING ITEMS ARE NOT ACCEPTED IN YOUR YELLOW BIN

<p>CLOTHING / SHOES ❌</p>	<p>BAGGED WASTE ❌</p>	<p>COFFEE CUPS ❌</p>
<p>TOYS, COAT HANGERS, SHARPS, E-WASTE ❌</p>	<p>LONG LIFE MILK/JUICE CONTAINERS ❌</p>	<p>BIODEGRADABLE CUTLERY & PLATES ❌</p>

For a detailed list please visit melton.vic.gov.au/wasteAZ



GOOD TO GO

RECYCLE

How to make sure you recycle right



However, some things can't go in your yellow bin:

- ❌ Plastic bags or any soft plastic wrap or film
- ❌ Food and garden waste
- ❌ Reusable shopping bags
- ❌ Nappies
- ❌ Clothing and footwear
- ❌ Paper towel and tissues
- ❌ Batteries
- ❌ Bubble wrap or padded bags
- ❌ Electrical items
- ❌ Paints and chemicals
- ❌ Polystyrene
- ❌ Rubber tyres or tubes
- ❌ Takeaway cups, plates and cutlery
- ❌ Drinking glasses, vases, Pyrex or plate glass

TOP TIP



If it's hard plastic, like shampoo bottles or milk containers, put it in your yellow bin.



If it's soft plastic, like chip packets or cling film, put it in your red bin or visit melton.vic.gov.au/wasteAZ for further details on other recycling options available for soft plastics

YOUR GREEN BIN (FOOD ORGANICS, GARDEN ORGANICS)



The contents of your green bin are collected and taken to a composting facility. The material is processed into mulch and nutrient-rich compost and soil conditioners that improve soil health, fertility and productivity for agricultural and horticultural use.

By placing food and garden waste in your green bin, you are keeping this material out of landfill and preventing it from releasing methane (a greenhouse gas 25 times more harmful to the environment than carbon dioxide).

Our residents divert more than 12,000 Tonnes of FOGO materials from landfill each year* and play a key role in turning waste materials into a valuable resource.

However, recent waste audits revealed that just over 49 per cent* of waste put in the red bin across the City of Melton is garden material and food waste. Residents can divert this from landfill by using the green bin instead or by starting a backyard compost.

* Figures accurate as at 30 June 2023; sourced from City of Melton's waste collection records.

Don't use **ANY** bags at all for collecting your food waste as they contaminate the load

For tips on how to use your FOGO bin and reduce odour, please visit melton.vic.gov.au/FOGO

THE FOLLOWING ITEMS ARE NOT ACCEPTED IN YOUR GREEN BIN

<p>PLASTIC BAGS (INCLUDING BIODEGRADABLE BAGS) ❌</p>	<p>ROCKS ❌</p>	<p>BRICKS ❌</p>
<p>LARGE LOGS ❌</p>	<p>PLANT POTS ❌</p>	<p>FERTILISERS ❌</p>

To order a green bin call 9747 7200 or visit melton.vic.gov.au/binoptions

GOOD TO GO

FOGO

Food organics. Garden organics.



The less waste we send to landfill, the better the environmental outcome.

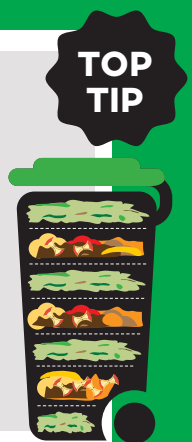
Putting food scraps and garden waste in your Council Green Bin means it can be turned into a valuable resource – compost – which can be used in gardens, parks and farms.

However, some things can't go in your green bin (FOGO waste):

- ❌ Plastic bags (including biodegradable or compostable bags)
- ❌ rocks
- ❌ bricks
- ❌ large logs
- ❌ plant pots
- ❌ fertilisers
- ❌ animal waste

TOP TIP
Layer your green bin with food and garden waste to help reduce odour.

Layer the bottom of bin with green waste (this reduces the amount of food scraps getting stuck to bottom).



MELTON RECYCLING FACILITY



RECOVERING MORE FROM LANDFILL

The facility accepts a range of different material and many items can be disposed of for FREE for City of Melton residents.

The Resale Shop, located on site also accepts donations of various items provided they are reusable and in reasonable condition. These items are offered back to the community at a small fee, giving them a second life and often diverting the items from landfill.

SORT YOUR LOAD AND SAVE

When you sort your load prior to arriving, you can save on gate fees and reduce landfill.

By separating your FREE recyclable items from your chargeable waste streams prior to arrival, you will save yourself time at the facility, help

reduce the amount of waste sent to landfill and only pay for your chargeable waste items at the gate house.

GENERAL CONDITIONS

Melton Recycling Facility cannot accept toxic, contaminated or industrial waste, asbestos or chemicals.

Loads more than three cubic metres will be charged in tonnage rate only.

Prices are valid from 1 July 2023.

LOCATION

33 Ferris Rd, Cobblebank.

OPEN

Open seven days a week, excluding New Year's Day, Good Friday, ANZAC Day and Christmas Day.










For more information on Fees and Charges please visit melton.vic.gov.au/MRF

MELTON RECYCLING FACILITY



TIPS FOR REDUCING WASTE

FREE items are for residents only. Charges apply for non-residents on some items.

E-WASTE ✓ Waste such as TVs, computers, printers, DHS/DVD players, mobile phones and microwaves (working or not) 	WHITEGOODS ✓ Such as fridges, washing machines and dryers (working or not) 		
PAPER ✓ Cardboard and paper excludes magazines 	GLOBES ✓ Light globes and fluorescent tubes 	PAINT ✓ Paint (max 20L container and up to 100L) and BBQ gas bottles (up to 9kg) 	MOTOR OIL ✓ Motor oil (Max 10L containers, and up to 50L), Cooking oil (Max 25L containers and up to 50L) 
BATTERIES ✓ Car and household batteries 	DRUMS ✓ Drum Muster Approved Drums 	STEEL ✓ or Solar Panels 	KERBSIDE RECYCLABLES ✓ 

USE THE MELTON RECYCLING FACILITY FOR THE FOLLOWING ITEMS:

Tyres **FEES APPLY** **Building materials, bricks, concrete, pavers, tiles, soil, rocks, fencing, renovation or demolition waste** **FEES APPLY** **Garden organics** Or subscribe to our kerbside green bin service **FEES APPLY**



For more information please visit melton.vic.gov.au/MRF

HARD WASTE COLLECTION SERVICE



To help residents dispose of larger hard waste items, Council provides a convenient service that will pick up hard waste items from your home.

Each household is entitled to two hard waste collections up to three cubic metres each year using your waste disposal entitlements.

Simply make a booking and place the items out by 6am on the collection day and our friendly contractors will collect them from within your property boundary.

Available to owners (and tenants) where a 'Waste Service' fee is currently applied to the residential property.

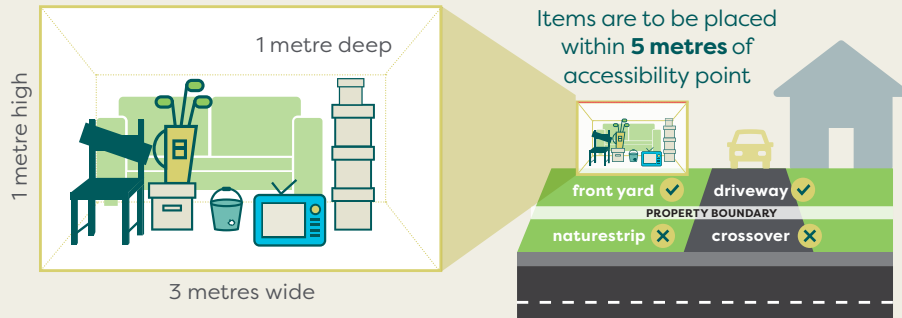
COLLECTION GUIDELINES

Maximum amount:
3 cubic metres
(3m x 1m x 1m or equivalent)

Maximum item length
(timber, metal, carpet etc):
1.5 metres

Maximum item weight:
Easily lifted by two people

Place items **ONLY** within your boundary



Bookings are essential, call 9747 7200 or visit melton.vic.gov.au/hardwaste

HARD WASTE COLLECTION SERVICE

Unacceptable and excess hard waste will not be collected. It is the resident's responsibility to appropriately dispose of uncollected hard waste items.

THESE ITEMS CAN BE COLLECTED



THESE ITEMS CANNOT BE COLLECTED



<ul style="list-style-type: none"> ✓ Furniture, kitchenware, playground equipment, toys, bicycles 	<ul style="list-style-type: none"> ✓ White goods, appliances, e-waste (e.g. TVs, computers) Remove fridge doors 	<ul style="list-style-type: none"> ✗ Chemicals, fertilisers, pesticides, solvents and more Refer to sustainability.vic.gov.au 	<ul style="list-style-type: none"> ✗ Household garbage, industrial or commercial waste
<ul style="list-style-type: none"> ✓ Tree Branches and roots, tree stumps (max 30cm diameter) <p>YUKKAS MUST BE TIED ALLOWING TO BE PICKED UP BY ROPE</p> <p>BUNDLED AND TIED, NO THORNS</p>	<ul style="list-style-type: none"> ✓ Mattresses, bed bases (limit of 2 pieces) 	<ul style="list-style-type: none"> ✗ Paint, BBQ gas bottles, CFL globes and fluorescent tubes 	<ul style="list-style-type: none"> ✗ Building materials, bricks, concrete, pavers, tiles, soil, rocks, fencing, renovation or demolition waste
<ul style="list-style-type: none"> ✓ Carpet, rugs (rolled or folded) 	<ul style="list-style-type: none"> ✓ Scrap metal 	<ul style="list-style-type: none"> ✗ Kerbside recyclables 	<ul style="list-style-type: none"> ✗ Car parts, batteries or tyres
<ul style="list-style-type: none"> ✓ Cardboard (flattened, bundled and tied) 	<ul style="list-style-type: none"> ✓ Glass (including mirrors) <p>WRAPPED AND LABELLED</p>	<ul style="list-style-type: none"> ✗ Motor oil (Max 10L container, up to 50L) 	<ul style="list-style-type: none"> ✗ Garden organics Or subscribe to our kerbside green bin service

Bookings are essential, call 9747 7200 or visit melton.vic.gov.au/hardwaste

LITTER AND DUMPED RUBBISH



Litter and dumped rubbish is not only unsightly, but also creates significant environmental impacts across the municipality.

In an average year, close to **4,000 tonnes** of illegally dumped litter is collected in the City of Melton, costing Council over \$1.8 million to collect and dispose of.

Council are committed to identifying those who illegally dump rubbish within our municipality, Council have installed various cameras in known hotspots to catch and also deter dumping. Many of these cameras have resulted in infringements.

If you commit a littering offence you can be fined up to \$9,000 and offenders may be summoned to appear in court.

Additional details such as the number plate, type of vehicle, date, time and other identification of the dumper are also useful, but only if you can obtain this information safely.

It is important that you do not approach dumpers or touch the rubbish (this may make any evidence inadmissible in court).

Littering and dumping includes:

- unwanted household items, general rubbish, clothing that is put on naturestrips, roadsides and outside charity op shops
- soil and other building materials left outside a construction site or on road reserves
- putting household or business rubbish in a public litter bin.

To report dumping occurring you can complete a Litter Report form online at melton.vic.gov.au/dumpedrubbish.

The form enables you to send Council information that could lead to a fine or prosecution of someone who has littered or dumped rubbish in our City.



For more information please visit melton.vic.gov.au/wasteAZ

LITTER AND DUMPED RUBBISH



ILLEGAL NATURESTRIP DUMPING CAMPAIGN

Leaving unwanted items on naturestrips is not only unsightly, it invites further dumping in the area. Removal of waste left out on naturestrips costs Council well over \$100,000 per year, most items are left out on naturestrip by occupants of the property who are unaware that they are able to access a wide range of waste entitlements or even drop certain items to the Melton Recycling Facility for free.

Council are currently investigating and educating about naturestrip dumping in residential areas, We will be actively in the community sticking items left on naturestrips and providing postcards to residents about entitlements that they can access. Residents will be encouraged to remove the items from the naturestrip and use their waste entitlements or they may receive infringements.

THIS IS ILLEGAL DUMPING FINES APPLY

This site is under investigation. If you can assist please call 9747 7200.

If this belongs to you, REMOVE IT IMMEDIATELY.

Prevent illegal dumping and use the Melton Recycling Facility or book a hard waste collection. For more information visit melton.vic.gov.au/hardwaste or call 9747 7200 to make a hard waste booking.



For further information please visit melton.vic.gov.au/waste





SCHOOL AND COMMUNITY WASTE EDUCATION PROGRAM

Council engages with the community through a range of events, programs and partnerships to influence positive waste and recycling behaviours.

Programs and services are provided to schools and community groups to better educate our residents in waste and recycling, which seeks to encourage them to make sustainable



choices well into the future.

Presentations and talks about waste and recycling can be given on site by Council and can be tailored to suit your needs.

Presentations are given free of charge (budget permitting) and interested schools and community groups are welcome to contact us by emailing resourceeducator@melton.vic.gov.au.

Contact us by emailing resourceeducator@melton.vic.gov.au

BIN INSPECTION PROGRAM



The residents of City of Melton are keen recyclers and most residents want to do the right thing and recycle right.

Council's current average recycling contamination rate is around 28% and FOGO contamination rate is around 4%.* Unfortunately this is higher than the state average.

As part of Council's waste education program, Council conducts visual inspections of kerbside bins, through the Bin Inspection Program.

This program enables Council to provide households feedback on their waste disposal behaviours and gather contamination data for future targeted education campaigns.

All inspected bins are provided with direct feedback via a tag on their bins.



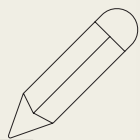
Did you know?

Approximately one third of yellow bins still contain items that cannot be recycled through your kerbside collection.

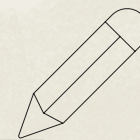
So it's important that every household does their bit to recycle right – Every bin counts!

* Percentages sourced from Council's Annual waste audit undertaken.

For more information please visit melton.vic.gov.au



A series of 20 horizontal lines for writing, arranged vertically down the page.



A series of 20 horizontal lines for writing, arranged vertically down the page. The top portion of these lines is partially obscured by the watercolor splash.

CUSTOMER SERVICE CENTRES

Monday to Friday,
8.30am - 5pm
9747 7200
csu@melton.vic.gov.au



MELTON.VIC.GOV.AU

MELTON RECYCLING FACILITY

33 Ferris Rd,
Cobblebank
Open 7 days,
8am - 4.30pm

