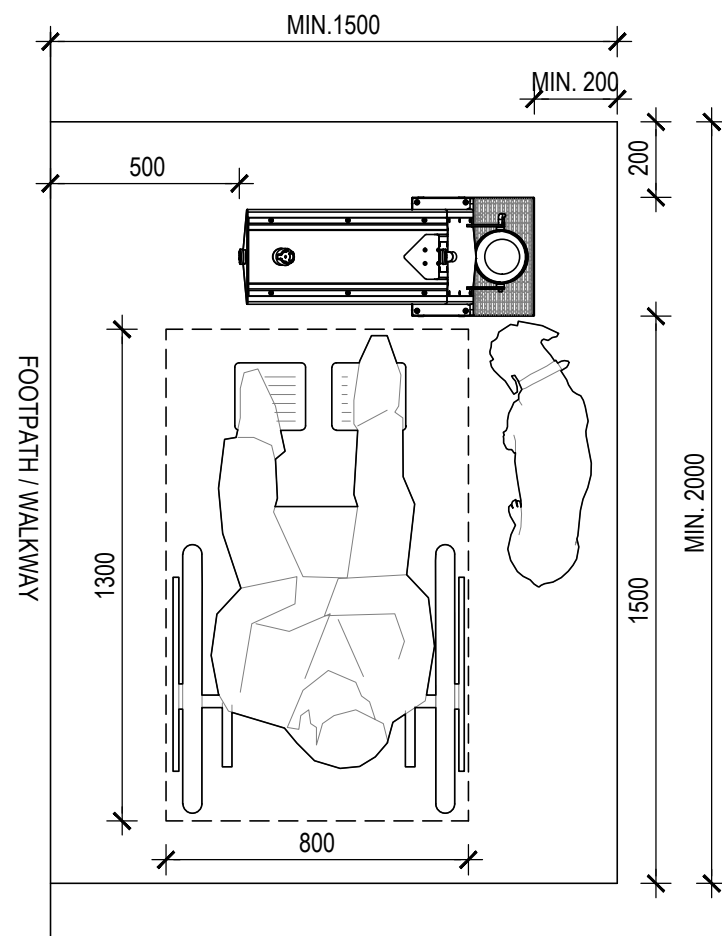
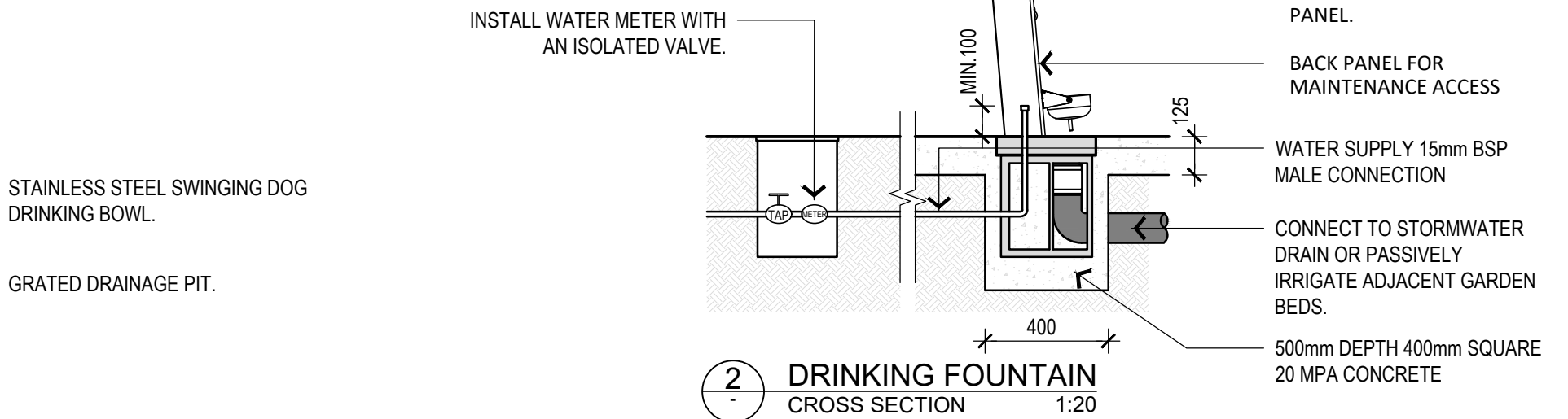


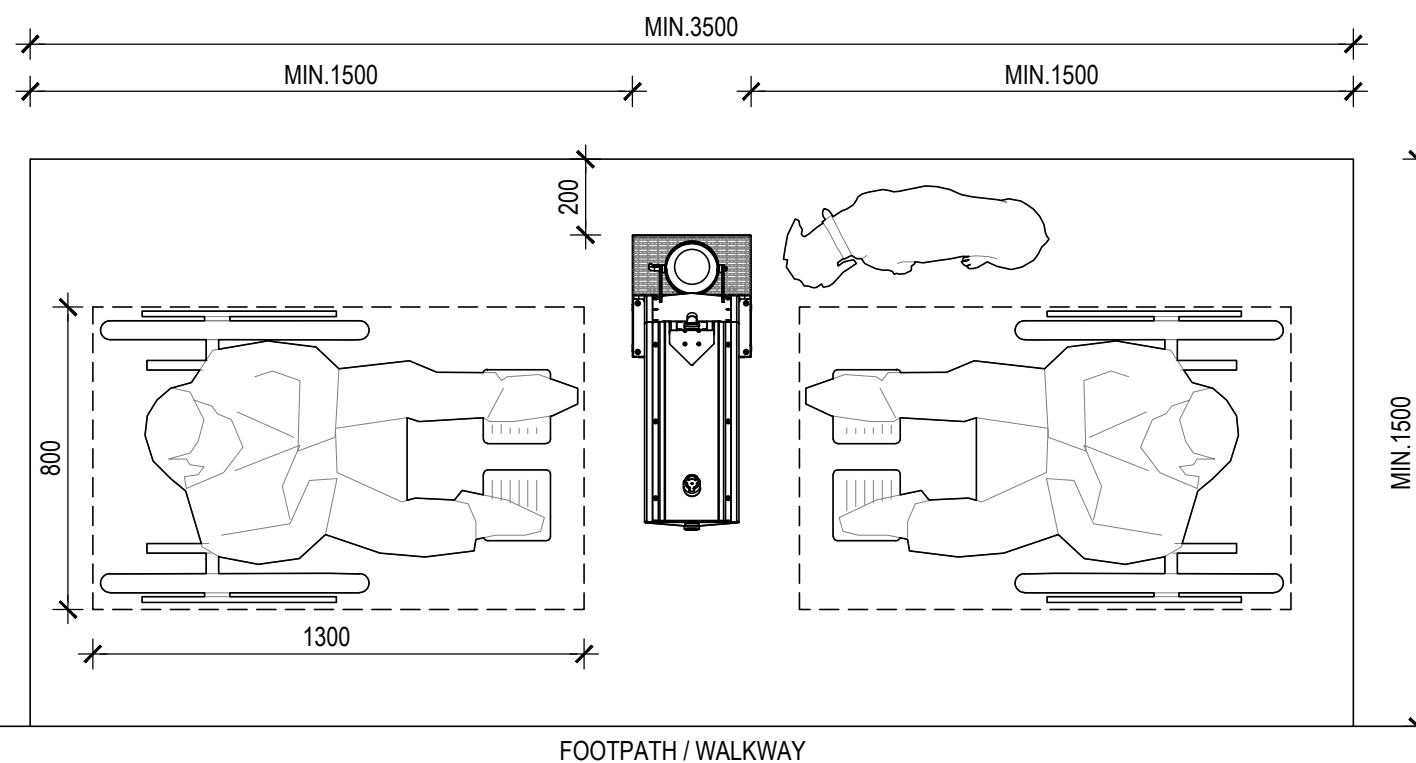
1 DRINKING FOUNTAIN
SIDE ELEVATION 1:20



3 DRINKING FOUNTAIN SINGLE APPROACH
PLAN 1:20



2 DRINKING FOUNTAIN
CROSS SECTION 1:20



4 DRINKING FOUNTAIN MULTIPLE APPROACH
PLAN 1:20

NOTES:

1. DRINKING FOUNTAINS MUST MEET THE REQUIREMENTS OF AS4020 AND OBTAIN WATERMARK CERTIFICATION. WATERMARK CERTIFICATION IS REQUIRED TO BE SUBMITTED TO COUNCIL FOR ALL PLUMBING AND DRAINAGE.
2. INSTALLATION OF ALL PLUMBING ITEMS IS TO BE PERFORMED BY A LICENSED PLUMBER AND SUPPLY COUNCIL WITH A PLUMBERS CERTIFICATE UPON COMPLETION.
3. DRINKING FOUNTAIN MUST PROVIDE UNIVERSAL ACCESS AND MEET THE REQUIREMENTS OF AS1428.2 - DESIGNING FOR ACCESS AND MOBILITY.
4. DRINKING FOUNTAINS TO BE POSITIONED IN AREAS OF HIGH ACTIVITY SUCH AS ADJACENT TO SHELTERS AND PICNIC SETTINGS.
5. NO WATER OVERFLOW ONTO SURROUNDING PATHWAYS OR PAVING.

E			
D			
C			
B	M.H.	3/06/25	PUBLISHED REVISION
A	M.H.	30/01/25	PRELIMINARY FOR REVIEW
ISSUE	APPROVED	DATE	DETAILS



ENGINEERING & ASSET SERVICES

**STANDARD DRAWINGS
LANDSCAPE**

DRAWING No.	MCCLA 104		DRAWN S. HUANG	CHECKED M. HUTCHINSON
			SCALE 1:20	DATE 03/06/2025
DRAWING NAME	FURNITURE - DRINKING FOUNTAIN		PAPER A3	REV B
			SHEET 1	OF 1