

Moving Ahead

IN THE CITY OF MELTON
AUGUST 2025



Building a Better City, Together

Melton City
Council Budget
Feature
2025/26

CONTENTS

Mayor's Message	2	A year in review	4	Your rates	7
Budget highlights	2	Major projects update	6	Waste entitlements	8



Budget highlights 2025/26

Delivering for our growing community

\$225.8m Capital works program

KEY HIGHLIGHTS INCLUDE:

Major Projects

\$45.3 million

for construction of Cobblebank Community Services Hub

\$27.8 million

to commence construction of the Plumpton Aquatic and Leisure Centre

Playspaces



\$800,000

for Arbour Boulevard Central Reserve playspace upgrade

\$1 million

for Parkwood Green Reserve playspace upgrades

\$800,000

for Melton South Recreation Reserve playspace upgrade

\$800,000

for Mt Carberry Reserve playspace upgrades

\$700,000

for Norm Raven Reserve playspace upgrade

Recreation Reserves



\$5.9 million

for the redevelopment of Taylors Hill Recreation Reserve Sportsground

\$3.8 million

to complete the MacPherson Park Rugby Pavilion

\$2.5 million

for reconstruction of the Arnolds Creek tennis courts



You can read more about what's in the budget at melton.vic.gov.au/budget



You can also check out the projects being delivered in your neighbourhood at budget.melton.vic.gov.au

Children's and Community Centres

\$8.4 million

for the Weir Views Children's and Community Centre

\$7.6 million

for the Deanside Children's and Community Centre

Road and Transport Upgrades – Taylors Road Corridor



\$4.5 million

for traffic lights at Sinclairs Road

\$2.1 million

for the completion of traffic lights at Plumpton Road

\$1.3 million

to commence construction of traffic lights at intersection of Westwood Drive, including road duplication between Westwood Drive and Gourlay Road

\$1.8 million

to commence duplication - Gourlay Rd to Westwood Drive, including upgrading Gourlay Road intersection

Additional Road Projects



\$2.8 million

for turning lanes at Exford Road car park and Murphys Road

\$2.3 million

to construct Sugar Gum Estate Pedestrian Path

\$2.2 million

for a new pedestrian bridge in Modeina Estate, Burnside

\$1.9 million

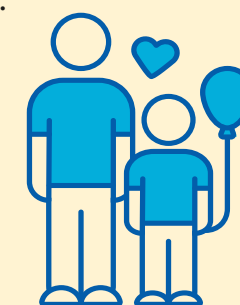
to upgrade the Exford Road/Wilson Road and Exford Road/Northcott Street intersection



Services

100+ services

to support our rapidly growing City, from Maternal and Child Health and community events, to state-of-the-art libraries, and services for seniors, families, children and youth.



Where your rates go: For every \$100

\$40.83

Capital Works



\$13.18

Waste Management



\$10.31

Parks, Open space and Environmental Reserves



\$6.38

Families and Children Services



\$4.79

Community & Aged Care Services



\$4.65

Road Services



\$4.46

Community Safety



\$4.21

Statutory Planning and City Design Services



\$4.20

Properties Maintenance



\$1.64

Library Services



\$1.41

Recreation and Youth Services



\$1.36

Engineering Services



\$0.74

Environment and Sustainability



\$0.69

Local Business Growth and Economic Development



\$0.61

Arts and Culture, and Festivals



\$0.54

Community Planning



A Year in Review 2024/2025

Snapshot of highlights from the past 12 months



WASTE SERVICES

7.5 million
kerbside bin collections

19,752
hard waste collections

4,075m²
graffiti removed

66,490
total tonnes of garbage,
recycling and FOGO
collected

39%
percent diverted
from landfill



COMMUNITY CARE

83,400 hours

of domestic assistance, personal care, respite
care, property maintenance and social support
groups delivered to 1,856 residents

19,800 meals

delivered at home, and in centre,
for 424 eligible residents



CITIZENSHIP

2,935

new citizens conferred

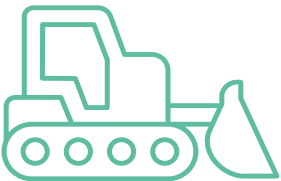
CAPITAL PROJECTS

COMPLETED

- Plumpton Community Centre
- Construction of the Melton Recycling Centre, and refurbishment of the Resale Shop, at the Melton Recycling Facility
- Bridge Road Community Hub
- Bridge Road intersection upgrade
- Bulmans Road upgrade

COMMENCED

- Caroline Springs and Rockbank Middle Road intersection upgrade
- Caroline Springs Town Centre Recreation Reserve Oval 2 redevelopment
- MacPherson Park Rugby Pitches
- Troups Road South upgrade
- Weir Views Children and Community Centre
- MacPherson Park Rugby Pavilion



PARKS AND ASSETS

4,500
trees planted

18
parks upgraded

4
public shelters
upgraded

18
playgrounds renewed

2
tennis courts
renewed



GRANTS

Community Grants
Program:
\$289,181
awarded to 83
community groups

Resident
Achievement Fund:
\$39,182
awarded to 33
individuals

FairGo 4
Youth Fund:
\$113,954
been awarded
313 individuals



LIBRARIES

559,982
library visits

1,509
programs delivered with
37,561 attendees



FAMILY SERVICES



Provided
7,323 hours
of parenting
support to
79 families

MATERNAL AND CHILD HEALTH



3,957
births

26,462
Key Ages and Stages visits

3,530 hours
of telephone consultations

3,043
referrals made

895
group hours delivered

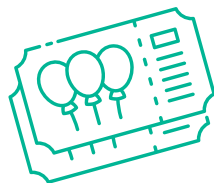
301 hours
of community strengthening
activities delivered

CUSTOMER SERVICE ENQUIRIES

207,452



ARTS AND EVENTS



Djerriwarrh Festival
ATTENDEES
15,000

Carols by Candlelight
ATTENDEES
4,500

Lakeside Alive
ATTENDEES
10,000

Art Exhibitions
11
across three
exhibition spaces

ROADS, FOOTPATHS, STORMWATER AND BRIDGES

2
major bridges
constructed

131kms
of kerb works

121kms
of new footpaths and
shared paths constructed

61kms
of roads constructed

97kms
of stormwater pipes

24kms
of roads resurfaced

1.6kms
of footpaths renewed

Major Projects update



Follow updates on all Council capital works projects by visiting melton.vic.gov.au/majorprojects



- a rooftop deck with stunning views
- a welcoming café, and
- Australia's first sensory aquatic space designed for inclusive, calming aquatic experiences for people of all ages and abilities

But that's not all! With additional spaces for fitness and allied health services, modern change rooms, and a strong focus on accessibility and inclusion, this centre is all about supporting active, healthy lifestyles in a welcoming community environment.

Construction is expected to kick off later this year, following the appointment of a head contractor. The project has received a \$15 million contribution from the Australian Government through the Thriving Suburbs Program—a major boost for the wellbeing of our growing community.

Get ready to dive into something amazing.

New Aquatic and Leisure Centre to make a splash

Get ready, something big (and splashy) is on its way to Plumpton/Fraser Rise. A brand-new Aquatic and Leisure Centre is set to transform Beattys Road into a vibrant destination for fun, fitness, and community connection.

This landmark, state-of-the-art facility is set to be a real game-changer for our community, featuring:

- a 50-metre indoor pool
- an outdoor leisure pool
- two dedicated learn-to-swim pools
- interactive splash play zones
- a fully equipped gym

New Community Services Hub for Cobblebank: A New Heart for Community Support

Big things are coming to Cobblebank! Construction has officially begun on a brand-new Community Services Hub, a vibrant and welcoming space designed to support the growing needs of our community in Melbourne's booming west.

Following a competitive process, Kane Constructions has been appointed to bring this exciting project to life. Strategically located on the corner of Stadium Drive and Hollingsworth Drive, the Hub will sit right in the heart of a thriving precinct—just steps from the new train station, Cobblebank Stadium, the future Melton Hospital, and a buzzing mix of shops and entertainment.

This five-storey, purpose-built facility (complete with basement parking) is set to be a game changer.



Designed to achieve a Green Star sustainability rating, the Hub will offer a mix of community service spaces and commercial tenancies.

Most importantly, it's about people, and creating a space that evolves with our community's needs. The Hub will support the ongoing delivery of essential services while remaining flexible enough to adapt to the changing priorities of both service providers and the people they serve—now and into the future.

Backed by significant investment of around \$72 million, the delivery of this Hub is made possible thanks to a \$15 million contribution from the Australian Government's Thriving Suburbs Program, and \$4.6 million from the Victorian Government's Growing Suburbs Fund.

This is more than a building—it's a bold step toward a healthier, more connected community.

Rates

How are my rates calculated?

Rates are calculated on the Capital Improved Value (CIV) of your property. This means the combined value of your land and all improvements to the property. State legislation requires properties to be valued on a common date every year. All properties were valued on 1 January each year. For any questions regarding your property valuation, contact Council's Revenue department on 9747 7200.

What are the other charges on my notice?

Municipal Charge – \$189 is applied to each rateable property to recover part of the administrative costs of operating Council.

Waste Management Charge – a flat rate of \$308 is payable for waste disposal. This fee covers kerbside waste collection and disposal, and household waste entitlements.

Emergency Services and Volunteers Fund

Since 2013, all properties in Victoria have paid the State Government's Fire Services Property Levy (FSPL). As of 1 July 2025, the Fire Services Property Levy was replaced by the Emergency Services Volunteer Fund (ESVF). **This is not a Council levy;** however, Council is required to collect the ESVF levy on behalf of the Victorian Government. All funds collected by Council under the ESVF are passed on to the Victorian Government. For more information visit the State

Revenue Office website: sro.vic.gov.au/esvf or call the ESVF support line on 1300 819 033.

What if I'm experiencing financial hardship?

We understand that some people in our community are facing financial hardship, and this is something Council has taken into account in considering rates payments. If you are having difficulty paying your rates, please contact Council on 9747 7200.

To view our Financial Assistance (Rates and Charges) Policy and options please visit our website melton.vic.gov.au/rates



How to pay your rates

For full information about how you can pay your rates online, in-person or by direct debit or BPAY, visit melton.vic.gov.au/rates

→ Sign up for eNotices



eNotices allows you to self-manage all your properties, send notices to multiple email addresses, and print additional copies. Signing up will also let you login to view your notices online at any time.

- 1 Go to melton.enotices.com.au
- 2 Enter in your email address and eNotices Reference Number. You can find this on your rates notice.
- 3 Check your email inbox and click the validation link.
- 4 Select a password and mobile number. You will now receive notices in your email inbox and can login to view them online at any time.

Waste entitlements

Kerbside bin collections

Household waste, green waste and recycling is managed through kerbside bin collections, with various bin sizes and combinations available to choose from.

TABLE OF WASTE CHARGES

Option	GARBAGE BIN	RECYCLE BIN	FOGO BIN	ANNUAL CHARGE
A	120 litres	240 litres	240 litres	\$308
C	120 litres	240 litres	120 litres	
E	120 litres	240 litres	NIL	

The charge for an additional bin is \$164.

A copy of the bin collection calendar, and a detailed list of all the items that can be placed in each bin can be found on Council's website: melton.vic.gov.au/waste

If you are receiving a Council kerbside waste collection service, including both tenants and owners, you can access the following waste entitlements:

Two hard waste collections up to 3m³ from within your property boundary. Bookings essential.
Visit melton.vic.gov.au/hardwaste

OR

Two visits to the Melton Recycling Facility with a car or trailer up to 1m³. Proof of residency is required.
Visit melton.vic.gov.au/waste for more information.

OR

One visit to the Melton Recycling Facility and one At Home hard waste collection.

Options expire on 30 June 2026. Terms and conditions apply.
Visit melton.vic.gov.au/waste for more information.



Councillors and Wards



MAYOR

Cr Steve Abboushi
Bullum Bullum Ward
P: 0437 231 680
E: Steve.Abboushi@melton.vic.gov.au



DEPUTY MAYOR

Cr Lara Carli
Sugar Gum Ward
P: 0409 951 020
E: lara.carli@melton.vic.gov.au



Cr Kathy Majdlik
Lake Caroline Ward
P: 0412 584 058
E: kathy.majdlik@melton.vic.gov.au



Cr Brandi Morris
Coolibah Ward
P: 0418 999 577
E: Brandi.Morris@melton.vic.gov.au



Cr Sophie Ramsey
Watts Ward
P: 0412 584 067
E: sophie.ramsey@melton.vic.gov.au



Cr Julie Shannon
Stringybark Ward
P: 0499 801 302
E: julie.shannon@melton.vic.gov.au



Cr Bob Turner
Cambrian Ward
P: 0412 584 224
E: bob.turner@melton.vic.gov.au



Cr Ashleigh Vandenberg
Jackwood Ward
P: 0499 801 183
E: ashleigh.vandenberg@melton.vic.gov.au



Cr John Verdon
Hilltop Ward
P: 0418 444 883
E: John.Verdon@melton.vic.gov.au



Cr Dr Phillip Zada
Mt Atkinson Ward
P: 0418 999 659
E: phillip.zada@melton.vic.gov.au

Connect with us

MELTON CITY COUNCIL

232 High Street, Melton
193 Caroline Springs
Boulevard, Caroline Springs

31 McKenzie Street, Melton
PO Box 21, Melton VIC 3337

9747 7200 melton.vic.gov.au

facebook.com/cityofmelton

instagram.com/cityofmeltonofficial



Interpreter service: Call 13 14 50 and ask to be put through to Melton City Council on 9747 7200

Published by Melton City Council July 2025. Disclaimer: Information contained in this newsletter is current at the time of printing.

Acknowledgment of Country

Melton City Council acknowledges the Kulin Nations as the Traditional Owners and custodians of this land and pays respect to their Elders past and present.