



Our community

The City of Melton is one of Australia's fastest growing areas. Our population will increase from **232,721** over the next 30 years to almost **480,000**. This will make our City larger than Canberra and four times the current size of Ballarat.

Only 23 kilometres from Melbourne's CBD, the City of Melton's rapid residential development is seeing 5,500 new homes annually providing diversity and affordability in housing options. The City of Melton is supporting State and Federal housing policies with 100,000 more dwellings to be built by 2051.

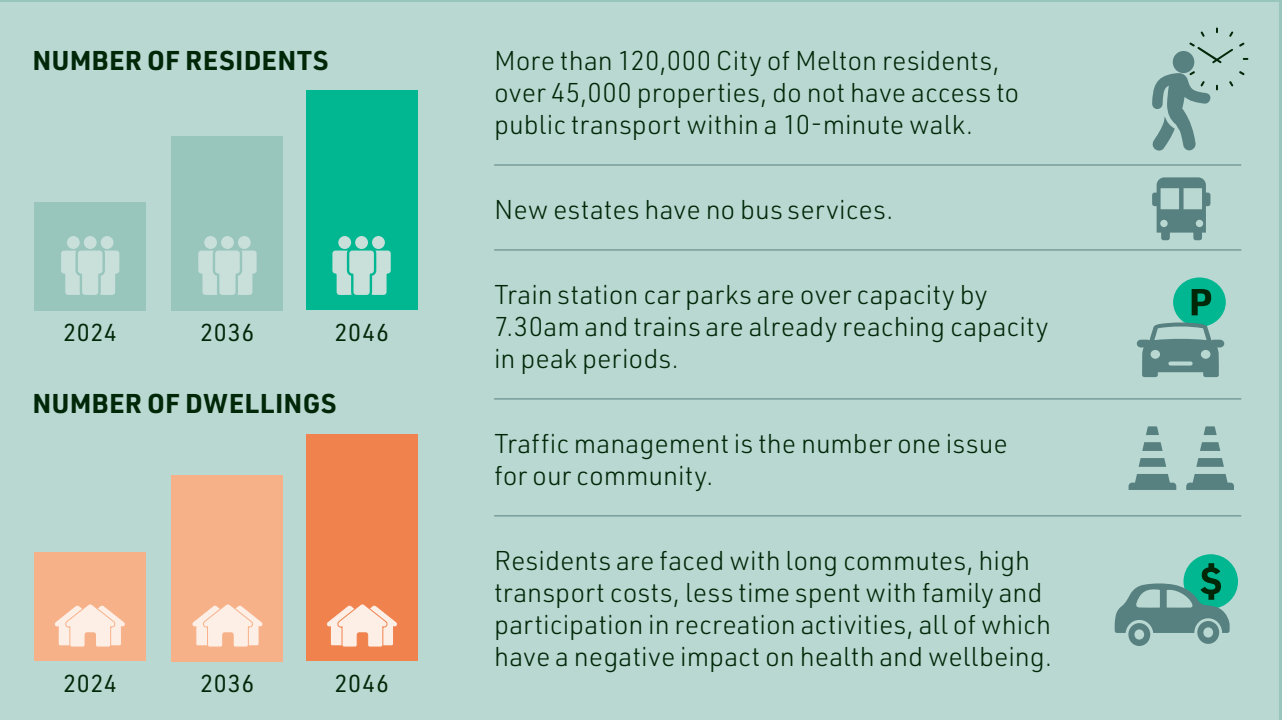
We are also seeing rapid development and commercial uptake of our employment precincts to create local jobs and unlock economic opportunity. Many national and international companies are seeing the advantage of locating in the City of Melton including Amazon, Nike, DHL and Electrolux.

As our population and commercial activity booms, so too does demand for improved transport infrastructure to relieve pressure on existing infrastructure and increase productivity.

COMMUNITY
SENTIMENT
RESEARCH
DECEMBER 2024

62.3%
Rated roads poor
or very poor

63%
Rated traffic
congestion a
significant issue



What is needed

A major roads package, implementation of the Western Rail Plan including electrification and duplication of the Melton line, to create four rail tracks and the construction of new rail stations at Mt. Atkinson, Thornhill Park and Calder Park.

Transforming communities

Traffic and transport investment is required now to support existing, new and future developments across our City.

These major projects will better connect our housing, education, retail and commercial, and industrial precincts creating jobs, improving productivity, wellbeing and liveability.

Investment will deliver:

- Jobs and skills
- Accessibility
- Connectivity
- Liveability
- Productivity
- Sustainability

"My daily commutes are significantly impacted by congestion on the Western Highway and Christies Road interchange. Morning and afternoon peak sees significant congestion adding considerable travel time. Often, I will bypass this exit, travel further down the Western Highway to Hopkins Road exit and double back."

Caroline Springs Resident

Our facility is a major investment at Enhance Place and accessed via Hopkins Road, Truganina that will service over 4,000 stores, premises, and customers in Victoria, stocking products from over 2,000 suppliers. Each day there are many truck movements in and out of our facility with thousands of pallets of inventory to be processed at the site each week. The condition of Hopkins Road is a major safety concern for our drivers and up to 700 Team members. The existing congestion on the road means that the heavy vehicles are impeded from turning out of the site onto Hopkins Road and a risk to all vehicles on the stretch of road between the Western Highway and Boundary Road. Urgent investment is needed as our area grows rapidly with significant investment from other major supply chain and logistics companies.

State General Manager, Commercial Business

"If a rail station was at Mt. Atkinson, I would catch the train to work meaning my wife, who works from home could take our daughter to and from child care. This would reduce the time spent commuting and the time our daughter spends in child care. It would also alleviate the need to purchase a second car, which we may be forced to do in 2025."

Mt Atkinson resident

For more on these projects including project designs, 3D renders and economic modelling please visit movingmelton.com.au

CONTACT DETAILS
Melton City Council
T 03 9747 7200
E officeofceo@melton.vic.gov.au

Let's get the City of Melton Moving

The City of Melton is building over 109,000 homes and look to the Federal Government to fund supporting infrastructure

Upgrade Western Highway

- Construct new interchanges
- Upgrade existing Interchanges
- Additional road lanes
- Urbanisation

Roads Package

- Melton Highway
- Hopkins Road
- Palmers Road Corridor – Robinsons Road / Westwood Drive, Calder Park Drive

Upgrade the Melton Line

- Electrify and duplicate the Melton rail line

New Train Stations

- Mt Atkinson
- Thornhill Park
- Calder Park

Investment Outcomes



Roads ▼

| WESTERN HIGHWAY | MELTON HIGHWAY | HOPKINS ROAD | PALMERS ROAD CORRIDOR* |
|----------------------------------------------------------------------------------------------------|-----------------------------------------------------------------------------|--------------------------------------------------|----------------------------------------------------------------------------------------------|
| ▶ Additional lanes ▶ New interchanges ▶ Upgraded existing interchanges ▶ Active transport | ▶ Urbanisation of the road ▶ Road duplication ▶ Intersection upgrades | ▶ Road duplication ▶ Signalised intersections | ▶ Declaration ▶ Duplication ▶ Build Calder Park Interchange ▶ Upgrade intersections |
| HOURS OF TRAVEL TIME SAVED | 67,000 hours | 74,000 hours | 72,000 hours |
| 343,000 hours | | | |
| REDUCTION IN CRASHES | 37% or 98 fewer crashes | 45% or 101 fewer crashes | 38% or 220 fewer crashes |
| 18% or 170 fewer crashes | | | |
| TONNES OF GREENHOUSE GASES SAVED | 2,100 tonnes or 50% reduction | 1,800 tonnes or 30% reduction | 5,000 tonnes |
| 37,000 tonnes | | | |

* Robinsons Road; Westwood Drive; Calder Park Drive; Calder Park Interchange

Rail ▼

Electrification and duplication to four rail tracks of the Melton Line from Sunshine station will result in:

| | | |
|----------------------------------------------------------------|---------------------------------------------------------------------------|------------------------------------------------------|
| 12,000 fewer cars on the network every day | 33,000 entries and exits every day for all stations in the City of Melton | 36.1% or 6,363 more bus boardings in City of Melton |
| 77,300 fewer private vehicle kilometres travelled every day | \$236,251 daily reduction in the 'cost of congestion' | 27% increase in public transport usage across Melton |
| 15,147 fewer trips by car per day, primarily in City of Melton | | |

45%

growth in train station entries in one year between 2022/23 and 2023/24.

183,500

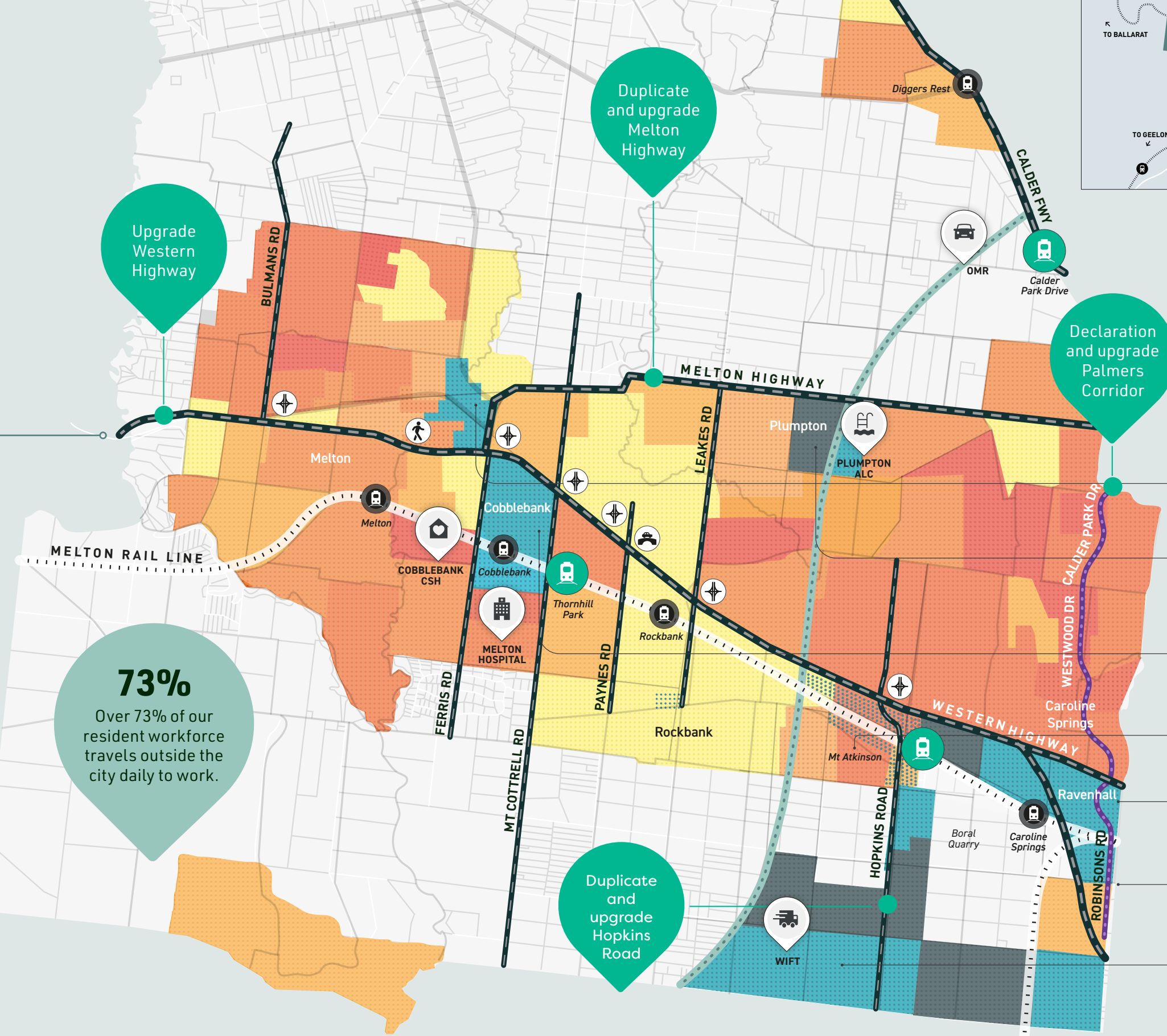
new residents over the next 30 years will move into the Melton rail line corridor

WESTERN HIGHWAY

- ▶ Second largest freight carrier of any national highway
- ▶ More than 5,400 trucks a day
- ▶ 225,000 new residents along Western Highway corridor by 2046
- ▶ To increase from 86,000 vehicles to 110,000 per day by 2031.



Connecting growth through critical infrastructure



Upgrade Western Highway

Duplicate and upgrade Melton Highway

Declaration and upgrade Palmers Corridor

New stations in Mt Atkinson, Thornhill Park and Calder Park

73%

Over 73% of our resident workforce travels outside the city daily to work.

Duplicate and upgrade Hopkins Road

10,027 JOBS
Melton Industrial Precinct

11,421 JOBS
Plumpton Major Town Centre and Industrial Precinct

24,000 JOBS
Cobblebank Metropolitan Activity Centre

3,200 JOBS
Mt Atkinson Major Town Centre

5,975 JOBS
Ravenhall Industrial Precinct

2,000 JOBS
Robinsons Road Industrial Precinct

8,582 JOBS
Chartwell East Industrial Precinct



RAPID GROWTH

POPULATION PROJECTIONS FOR 2041

- 6,000 to 10,000
- 10,000 to 16,000
- 16,000 to 25,000
- 25,000 to 37,000

EMPLOYMENT PROJECTIONS FOR 2041

- Employment Precinct
- Employment Precinct

PRIORITY PROJECTS

- Melton Hospital
- Plumpton Aquatic and Leisure Centre (Plumpton ALC)
- Cobblebank Community Services Hub (Cobblebank CSH)
- Western Intermodal Freight Terminal (WIFT)
- Outer Metropolitan Ring (OMR)

- Western rail
- OMR
- Palmers Road Corridor
- Roads / Highways
- Proposed train station
- Existing train service
- Full-diamond interchange
- Pedestrian overpass
- Vehicular overpass