

E-Waste in Victoria

E-waste (electronic waste) is growing up to three times faster than general municipal waste in Australia.

It covers a range of items we all use and discard from our daily working and home lives, including televisions, computers, mobile phones, kitchen appliances and white goods.

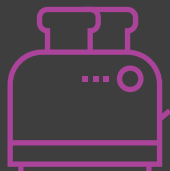
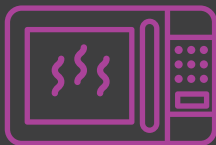
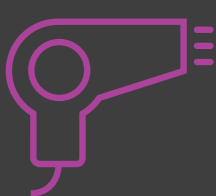
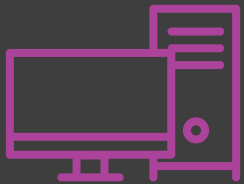
These items contain both hazardous and valuable materials that can be recovered when they reach the end of their working life.

Acknowledging the risks and opportunities associated with e-waste, the Victorian Government has committed to banning e-waste from landfill in Victoria from 1 July 2019.

The e-waste ban will achieve a range of positive outcomes for the Victorian environment, community and industry.

These items can be included in your hard waste collection or dropped off at the Melton Recycling Facility free of charge.

EXAMPLES OF E-WASTE



Can I use these services?

- Both homeowners and tenants may use the hard waste collection service. Tenants must supply proof of residency such as a recent utilities bill at the time of request. This can be done via email or in person at one of Council's Customer Service Centres.
- Residents are entitled to **one** of the following Waste Disposal options (expiring 30 June each year):

Option 1

1 x At Call Hard Waste Collection

OR

Option 2

2 x FREE ACCESS to Melton Recycling Facility
33 Ferris Road, Cobblebank
(Refer to **Further information** to find out more)

Want to know what happens to your waste?


Check out  melton.vic.gov.au

For recycling tips, visit:

 recyclingnearyou.com.au

 sustainme.com.au

Further information

 9747 7200 (Council)

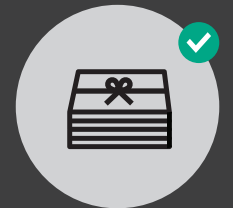
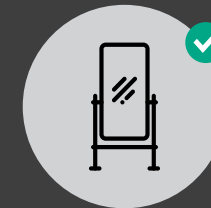
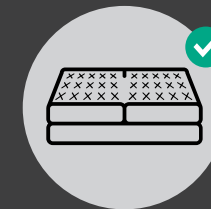
 9747 5902 (Melton Recycling Centre)

 csu@melton.vic.gov.au



Book it in. We'll sort it out.

Our hard waste services are a convenient way to dispose of your unwanted household items

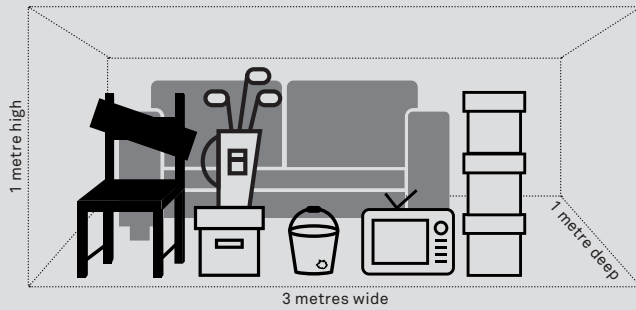


Collection Guidelines

Maximum amount: 3 cubic metres (3m x 1m x 1m or equivalent)

Maximum item length (timber, metal, carpet etc): 1.5 metres

Maximum item weight: Easily lifted by 2 people



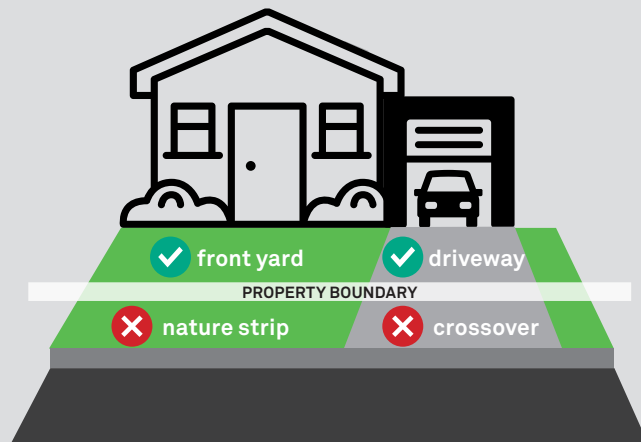
Be ready!

Items must be ready by **6am** on the day of collection

Hard waste items must be clearly separate from other items on your property



Place items ONLY within your boundary



YES! These items can be collected



Furniture, kitchenware, playground equipment, toys, bicycles



White goods, appliances, e-waste (e.g. TVs, computers)

Remove fridge doors

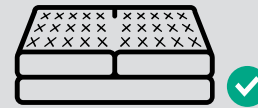
No protruding nails or screws, no sharp edges



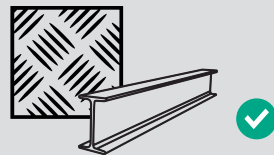
Bundled and tied, no thorns



Timber or tree stumps max 30cm diameter, roots and branches



Mattresses, bed bases (limit of 2 pieces)



Scrap metal



Carpet, rugs (rolled or folded)



Cardboard (flattened, bundled and tied)



Glass (including mirrors) Wrap and clearly label 'Glass'

NO! These items cannot be collected



Chemicals, fertilisers, pesticides, solvents and more

Refer to sustainability.vic.gov.au

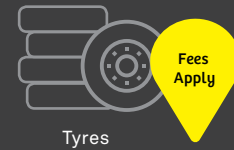


Household garbage, industrial or commercial waste

Use the Melton Recycling Facility for the following items:



Kerbside recyclables



Tyres



Paint, BBQ gas bottles, CFL globes and fluorescent tubes, car and household batteries



Building materials, bricks, concrete, pavers, tiles, soil, rocks, fencing, renovation or demolition waste



Motor oil Free disposal up to 20L in max 6L containers



Garden organics Or subscribe to our kerbside green bin service