

KEEPING OUR CHILDREN SAFE

- Children up to nine years old should hold an adult's hand in traffic
- School crossings are the safest place to cross the road
- Model safe crossing procedure: STOP, LOOK, LISTEN and THINK
- Drivers must stop at flagged children's crossings if a pedestrian is on, or entering the crossing, even if there is no crossing supervisor present
- Children should exit the vehicle from the rear kerbside door where possible
- Plan your trip, don't change direction of travel
- U turns should be avoided, please use roundabouts to turn your vehicles around where possible

CHILD RESTRAINTS & BOOSTER SEATS

- Children aged 4 years to under 7 years must be properly fastened in an approved adjustable forward-facing restraint with built in harness OR an approved booster seat with a properly fastened and adjustable seatbelt or child safety harness
- Did you know? The Victorian road rules allow a child aged 7 years and over to travel in the front seat of a car, however research shows that children under 12 years of age are at a greater risk of serious injury when travelling in the front seat
- More information can be found at www.vicroads.vic.gov.au/ChildRestraints

HANDY TIPS FOR SAFE PARKING

- Park a few streets away and walk to and from school. Use this time to teach your child about road safety and be a good role model
- Allow enough time to get your child to the school gate safely and without rushing
- Always observe the parking signs around the school
- Never park illegally in a driveway, or on/near a school crossing
- Never double park or wait on the road at a pick-up / drop off point. It blocks the vision for other drivers, forces children onto the road, obstructs the flow of traffic and may force other drivers to make inappropriate driving choices
- Do not use staff car parks or driveways to drop off your children
- Please remember to be patient, courteous and respectful when driving around schools
- More information can be found at www.melton.vic.gov.au/Services/Building-Planning-Transport/Roads-and-traffic/Car-parking

DRIVING SAFELY AROUND ROCKBANK PRIMARY SCHOOL



Safety around our school is everybody's responsibility



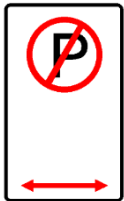
OBEY THE SIGNS

Parking unsafely puts children at risk

There are parking restrictions surrounding schools. The areas are regularly patrolled by City of Melton Local Law Officers, purposely for the safety of children, the community. Council conducts enforcement actions by the way of infringement notices to seek compliance and educate on unsafe parking matters, which can put a person in danger.

No Stopping (Min Penalty \$161)

You must not stop at the kerb or any reason where No Stopping signs are located or within 10 metres of an intersection



No Parking Signs (Min Penalty \$81)

You may stop for up to 2 minutes but must not leave your vehicle

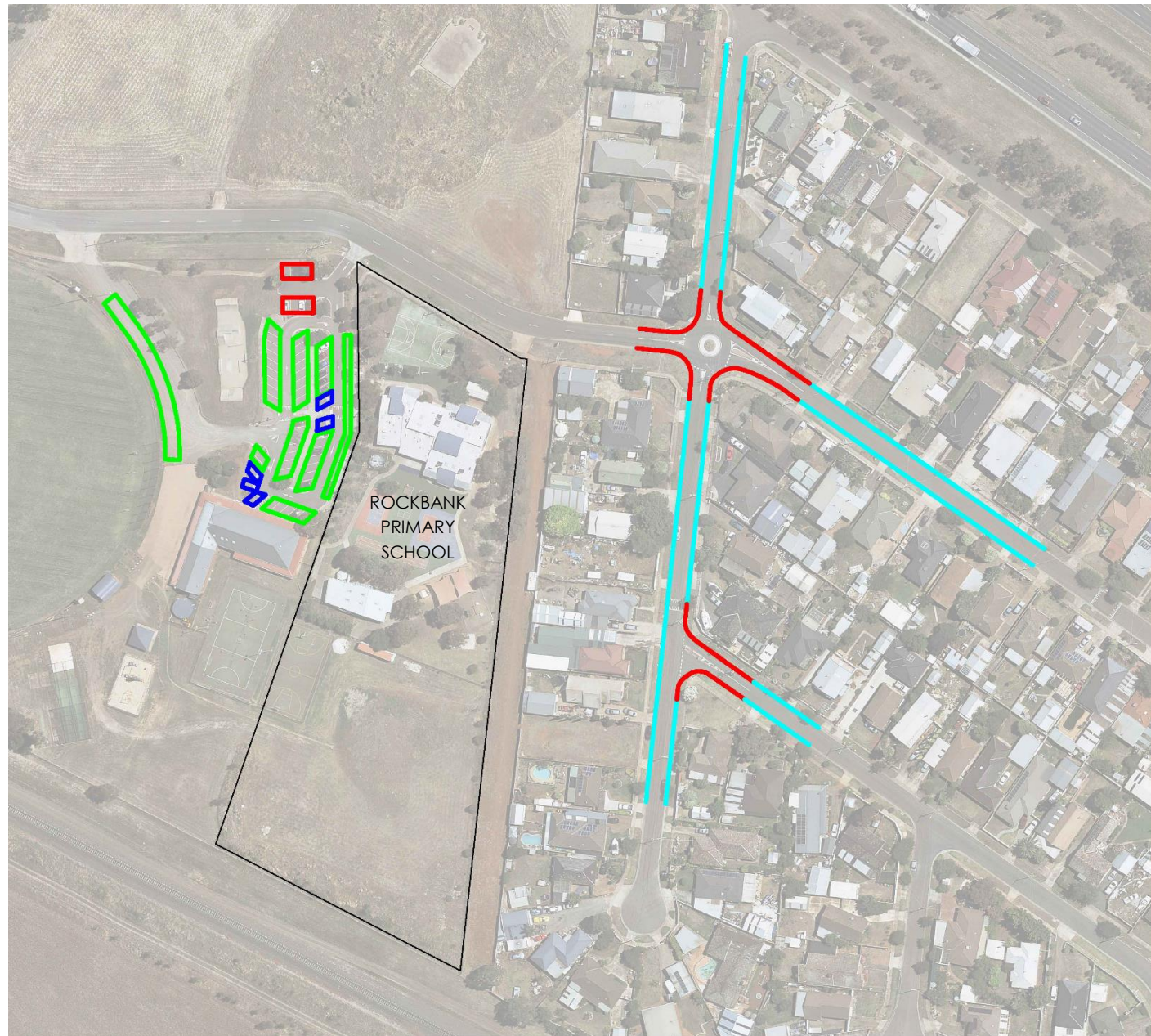
Speed Limit

Do not exceed 40km/h in school zones.



Other common parking offences

- Parking on a naturestrip
- Unreasonably obstructing (flow of traffic)
- Double parked
- Stop too close to a school crossing
- Park within 3 metres of a continuous dividing line or dividing strip.



	UNRESTRICTED PARKING		DISABLED PARKING
	UNRESTRICTED PARKING, GENERALLY AVAILABLE ON ONE SIDE OF ROAD ONLY (MAINTAIN 3m TRAFFIC LANE)		BUS ZONE
	PICK UP / DROP OFF ZONE (2 MINUTE PARKING)		NO STOPPING ZONE (STATUTORY ALL DAY, DURING SCHOOL TIMES, LOADING ZONE etc.)
	TIME RESTRICTED PARKING (10P, ¼ P, 1P etc.)		CHILDREN'S CROSSING