

Moving Ahead

IN THE CITY
OF MELTON
SPRING 2022



The City of Melton is a great place to live, work and play, and Council continuously strives to make life better and safer for our residents and visitors alike.

All the great things about living in our City, like open spaces, playgrounds, sports stadiums and recreation reserves; children's and community centres; safe roads and tree-lined boulevards; bike and walking paths; and libraries and public art, all have to be planned and budgeted for in advance.

And that's no easy task.

So, this year, when we prepared our 2022/2023 budget, we made sure to cement our commitment to our residents by delivering a family-friendly budget, prioritising

\$182 million on high-quality community services and an extensive Capital Works program that will create about 350 jobs.

Our budget has been developed to ensure our community has access to a well-maintained, quality road network; that our sports clubs are supported; that upgrades continue to be rolled out across the municipality and importantly, that our children have new and upgraded play spaces to enjoy.

Read on to find out more about our key infrastructure projects, and remember if you want to view the 2022/2023 Melton City Council Budget in full, visit

melton.vic.gov.au/budget

Contents

| | |
|--------------------|---|
| Mayor's Message | 2 |
| Budget overview | 2 |
| A year in review | 4 |
| Waste entitlements | 6 |
| Your rates | 7 |
| Fix Our Roads | 8 |





It's budget time, and once again Council has committed to delivering high quality programs, services and infrastructure to our residents, over the next 12 months.

Our 2022/2023 budget recognises and responds to the rapid growth of our City, with commitments to provide high quality infrastructure, programs, services, and facilities for our community.

We have focussed on strengthening our community by maintaining and upgrading existing assets, as well as preparing for the future with new infrastructure to support increasing development and population.

Once again, we continue to demonstrate our commitment to responsible and responsive governance by framing our budget around an average rate increase of 1.75 per cent.

In the upcoming financial year, we will deliver Capital Works totalling \$89.03 million, including roads (\$26.1 million); recreational, leisure and community facilities (\$14 million); footpaths and cycle-ways (\$2.6 million); bridges (\$1.3 million); and public art (\$452,000).

An \$85 pensioner rebate will again be available to eligible property owners.

Once again, community consultation informed Council's 2022/2023 budget deliberations, so I'd like to extend my personal thanks to everyone who shared with us their ideas and visions for our City.

Your local knowledge and insights have been invaluable, enabling us to prepare a budget that's not only fair and equitable, but also strives to achieve the timely delivery of infrastructure, programs and services for our community.

Cr Goran Kesic
City of Melton Mayor

2022/2023 Budget highlights

A strong investment in the City of Melton to support our growing community

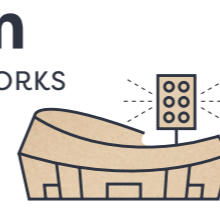
\$351m

OPERATING BUDGET



\$89m

CAPITAL WORKS PROGRAM



\$182.3m

IN SERVICES TO THE COMMUNITY



Budget highlights

\$37m
Buildings



\$26.1m
Roads



\$2.6m
Footpaths and cycleways



\$14m
Recreation, Leisure and Community Facilities



PROJECT

Improving road networks

- Extension to Bridge Road, Cobblebank
- Major upgrade of Bulmans Road, West Melton (from High Street to Centenary Avenue)
- New bridge at Sinclairs Road, Deanside
- Roundabout at Mount Cottrell Road and Greigs Road, Strathulloh
- Construction Troups Road South, Truganina
- Traffic lights at Caroline Springs Boulevard and Rockbank Middle Road
- Design of Greigs and Exford road bridge strengthening works
- Traffic study for Coburns Road duplication, Kurunjang



PROJECT

State-of-the-art sports facilities

- Upgrade rugby and gridiron precinct at MacPherson Park Recreation Reserve
- New Mt Atkinson sports precinct
- Redevelop Burnside Heights Oval 2
- Complete the new Diggers Rest Pavilion
- Design Bridge Road Recreation Reserve redevelopment
- Design Caroline Springs Oval 2 redevelopment
- Design Diggers Rest Oval 1 redevelopment



PROJECT

More community spaces

- Construct Rockbank Murray Road Children's and Community Centre
- Construct Mt Atkinson Children's and Community Centre
- Construct new Aintree Kindergarten
- Design new Cobblebank Community Services Hub
- Design new Plumpton Community Centre
- Design new Weir Views North Children's and Community Hub



PROJECT

Better parks and outdoor spaces

- Upgrade playspace and landscaping at Cobblestone Green Reserve, Caroline Springs
- Create playspace at Sovereign Boulevard Reserve, Melton West
- Design an upgrade to the playspace at The Parkway Reserve, Caroline Springs
- Design an upgrade to the playspace at Earlington Square, Burnside
- Improve playspace at North Terrace Reserve, Taylors Hill
- Improve playspace and basketball court at Stretton Drive Reserve, Brookfield
- Install small playspace at Splendour Circuit Reserve, Diggers Rest



PROJECT

Connecting pedestrians

- New footpath at Gleneagles Drive, Melton West
- Pedestrian refuge at Calder Park Drive, Taylors Hill
- Path lighting at Lunar Way Reserve, Fraser Rise
- Path lighting at Arnolds Creek, Melton West
- Path lighting at Navan Park, Harkness



For every \$100 of your rates

\$0.82

Arts, Festivals and Events



\$1.07

Local Business Growth - Economic Development



\$25.76

Capital works



\$2.88

Engineering Services



\$7.94

Road Improvements



\$4.05

Properties Maintenance & Other



\$9.91

Parks Open Space and Environment



\$9.88

Statutory Planning and City Design Services



\$0.42

Community Safety



\$16.15

Waste Management



\$1.52

Aged Care, Housing and Family Services



\$2.77

Children's Services



\$2.52

Community Planning



\$3.07

Recreation and Youth



\$2.16

Libraries and Arts



\$9.09

Other Services



... AND SO MUCH MORE

A year in review 2021/2022



\$31m
Cobblebank Indoor Stadium

\$1.2m
Reconstruction Exford Road,
Melton South

\$850,000
Hillside Recreation Reserve
Pavilion Extension

\$1.75m
Burnside Heights Oval Rebuild

\$1.4m
Brookside Pavilion Extension

\$3.38m
MacPherson Park Soccer Pavilion

3,000
Solar Retrofit Program:
3,000 solar panels installed
on key Council buildings

\$1.3m
Arnolds Creek Community
Centre Extension

\$2m
Brookside Reserve and Springside
Recreation Reserve Synthetic
Replacement

Received \$6.46 million in
Growing Suburbs Funding
for \$28.2m of infrastructure
projects

New Melton Hospital funded
up to \$1 billion from the State
Government.

**ESTIMATED JOBS CREATION:
4,000+ jobs** 😊

\$740.0 million Federal funding
and \$8.7 million State funding
for Western Intermodal Freight
Terminal (WIFT) in Truganina.

**ESTIMATED JOBS CREATION:
2,000+ jobs** 😊

\$31m
Delivered over \$31m parks
and streetscape works

7,000
residential lots developed



100,471m
pathways constructed,
including 6,920.67m shared
paths.

55.39km
of sealed roads
constructed



103 km
Kerbs

83 km
Stormwater
Drains

78
Pieces of play
equipment
installed

3,203
Stormwater
Pits

**Community
consultations**



27
in-person and online community
consultations

↑ 170%
Number of registered online
members increased by 170% and
number of contributions to the
platform increased by over 1,000%

10%
Around 10% of the community
participated in engagement and
consultation activities

103 community
members completed the
Daughters of the West
and Sons of the West
health programs 🇺🇸



\$213,045
in Community Grants to **51 local
groups** and organisations

236,121
community
members visited
Melton City
Libraries

560
deliveries to
residents

490,785
items borrowed

1,858
programs and
events: 11,479
attendees

12,021
customers
borrowed items
from our
collection



**FOLLOWING THE LAUNCH OF
COUNCIL'S FIX OUR ROADS
CAMPAIGN:**

- ✓ A federal Government commitment towards a Western Highway business case
- ✓ A State Budget allocation to duplicate part of Melton Highway

Kerbside bin collections
6,544,280 collections
61,506t of waste collected
Diverted 43% from landfill 😊

Hard Waste collections
16,323

Melton Recycling Facility
69,091 visitors
28,000t of waste collected
Diverted 59% from landfill 😊

Graffiti Crew removed
4,225 sq metres of graffiti
= approx. 10 basketball
courts

98
events held

40,000
Total attendance



Carols by
Candlelight

CARE Melton
Expo

Careers Expo

Harmony Day

Australia Day

Global Learning
Festival

16 Days of
Activism

Illuminate
Melton

Springside event
Heritage Festival

Healthy Aging
Forum

Melton Plate

City of Melton
Business
Excellence
Awards

Harmony Day

Youth Forum

51,451 hours
Delivered 51,451 hours of domestic
assistance, personal care, respite
care, property maintenance and
social support groups to 2,618 seniors,
people with disability and carers

20,161 meals
delivered / provided to 408
community members

646 hours
supporting carers in our community

635 hours
of access and support to help the
community navigate services

**Maternal and Child Health
Parent Education Program**

Clients: **409**
Group Sessions: **52**

**Maternal and Child Health
Sleep & settling**

Total outreach hours delivered:
607
Outreach service provided to
169 families
Sleep & Settling group sessions:
153

**Maternal and Child Health
Breastfeeding Support Service**

Centre consults: **656**
Home visit consults: **25**
Telephone support: **681**

Customer Service 🎧

193,541
Total
enquiries

15,708
In person

138,728
Calls

39,105
Internet

**IN 2021/22
WE FUNDED**

\$52M
in capital works

\$16.7M
in road projects

\$1.5M
in shared path
footpath projects

5,523
community members participated in
105 community learning programs

954
emergency food relief parcels
were distributed ❤️

2,000 people
Global Learning Festival: 2,000
people attended 98 events

**1500+
businesses**

supported through Venture
Melton Business Network

4,850 hours
Delivered 4,850 hours
family support

143,689 hours
of care Family Day Care



We supported 160 senior
crafters with equipment to
knit and crochet hundreds
of items donated to
Peter Mac Cancer Centre,
Indigenous families,
women and children
fleeing family violence
and **Trauma Teddies**

Waste entitlements



Kerbside bin collections

Household waste, green waste and recycling is managed through kerbside bin collection, with various bin sizes and combinations available to choose from.

TABLE OF WASTE CHARGES

| Option | GARBAGE BIN | RECYCLE BIN | FOGO BIN | ANNUAL CHARGE |
|--------|-------------|-------------|----------|---------------|
| A | 120 LT | 240 LT | 240 LT | |
| C | 120 LT | 240 LT | 120 LT | \$332 |
| E | 120 LT | 240 LT | NIL | |

Additional bins are available on request (fees and charges apply).



A detailed list of all the items that can be placed in each bin can be found on Council's website: melton.vic.gov.au/waste

If you are receiving a Council kerbside waste collection service, including both tenants and owners, you can access waste entitlements:

Two hard waste collections up to 3m³ from within your property boundary. Bookings essential. Visit melton.vic.gov.au/hardwaste

OR

Two visits to the Melton Recycling Facility with a car or trailer up to 1m³. Access for ratepayers is available by scanning your rates notice or quoting your Rates Assessment Number. Residential tenants can access these options by applying in advance. Proof of residency is required.

OR

One visit to the Melton Recycling Facility and **one At Home** hard waste collection.

Options expire on 30 June 2023. Terms and conditions apply. Visit melton.vic.gov.au/waste for more information.

Rates: your questions answered

Each year Council determines the amount of rate revenue needed to deliver key services, programs, facilities, parks, and other community infrastructure.

How are my rates calculated?

Rates are calculated on the Capital Improved Value (CIV) of your property. This means the combined value of your land and all improvements to the property. State legislation requires properties to be valued on a common date every year. All properties were valued as at 1 January 2022.

For any questions regarding your property valuation, contact Council's Revenue department on 9747 7200.

What are the other charges on my notice?

Municipal Charge – \$155 is applied to each rateable property to recover part of the administrative costs of operating Council.

Waste Management Charge – a flat rate of \$332 is payable for waste disposal. This fee covers kerbside waste collection and disposal, and household waste entitlements.

Fire Services Property Levy – Council is required by the State Government to collect the Fire Services Property Levy via your rates and remit the payment to the State Government. The charge is made up of two parts, a fixed charge on each property and a variable charge based on your capital improved value.

You can access more information at firelevy.vic.gov.au

What if I'm experiencing financial hardship?

If you are having difficulty paying your rates, please contact Council on 9747 7200.

To view our Financial Assistance (Rates and Charges) Policy and options please visit our website melton.vic.gov.au/rates

Environmental enhancement rebate

Owners of a property larger than two hectares (approximately five acres), may be eligible to receive a rebate on their rates (capped at \$10,000) if they meet the requirements of the Environmental Enhancement Program (EEP).

The program aims to assist landowners to undertake actions to reduce the presence and spread of pest plants and animals on their property.

Any queries on the program should be directed to Council's Environmental Services department.

For more info, download Council's Waste Guide at melton.vic.gov.au/waste

Capital Projects update



Diggers Rest Recreation Reserve

Despite the wintery conditions, works have progressed at Diggers Rest Recreation Reserve with foundations for the new community and sporting pavilion starting to take place.

The ground preparation of Oval 2 is complete and contractors have started work on the oval drainage stage.

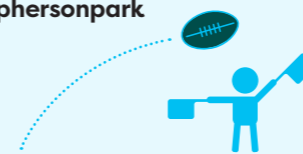
The oval and new cricket nets are due for completion at the end of 2022, with the pavilion to follow in the first quarter of 2023.



MacPherson Park new car park

The car park at MacPherson Park Recreation Reserve is finished!

The sealed car park will service the brand new, purpose-built soccer pavilion that was opened earlier this year, and includes lighting, landscaping, a pedestrian crossing and upgrades to access roads. Find out more at melton.vic.gov.au/Macphersonpark

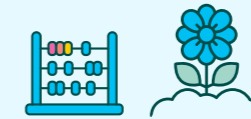


Ian Cowie Reserve welcomes female players

Ian Cowie Recreation Reserve in Rockbank is the latest pavilion in the City of Melton to be upgraded with female-friendly change rooms in a project jointly funded by Melton City Council and the Victorian Government.

City of Melton Mayor Cr Goran Kesic said it was Council's objective to achieve gender equitable, proud, safe and all-inclusive community facilities.

The State Government contributed \$150,000 through Sport and Recreation Victoria to make the pavilion fit for purpose and all-inclusive, with Melton City Council also funding \$200,000 towards the project.



Deanside Kindergarten opens

The City of Melton's littlest learners have a new kindergarten to enjoy.

The two-room interim Deanside Kindergarten was officially opened in June, ready for the statewide rollout of funded kindergarten for three-year-olds.

The kindergarten is co-located next to Deanside Primary School, creating a space for local children to start their lifelong learning journey from three-year-old kindergarten right through to the end of primary school, giving them continuity and security.

The temporary modular facility will be used to provide kindergarten services for the growing community of Deanside until it is replaced with a four-kindergarten room integrated children's centre in

2026, supporting families through their early development.

Deanside Kindergarten is a partnership between the State Government's Victorian School Building Authority, Melton City Council, Sparkways and Deanside Primary school.



Digging in for new early childhood centre

Construction on the Rockbank Murray Road Children's and Community Centre in Thornhill Park has commenced.

Once complete, the centre will include a four room kindergarten to deliver funded three and four-year-old kindergarten; Maternal and Child Health Services; Family and Early Childhood Services; parenting support programs; playgroups and a wide range of community programs and activities.

The \$11.7 million centre is due to be completed in 2023 and is jointly funded by the State Government through the Building Blocks Fund and Melton City Council.

To find out more about these and other Capital Projects in your community, visit melton.vic.gov.au/majorprojects

Fix Our Roads

Asking the State and Federal governments to invest in the City of Melton's roads



Over 2,500 people have already added their voices to the Fix Our Roads campaign, and as a result we have had some early successes.

The Federal Government has committed to a business case to determine the needs of the Western Highway and the State Government will duplicate part of the Melton Highway from Crown Drive to The Regency.

But there is so much more to be done.

As one of Australia's fastest growing municipalities, the City of Melton has experienced sustained rapid population growth for over two decades.

Our population is projected to grow from 216,389 in 2022 to over 450,823 by 2051, and ultimately over 500,000: larger than the current population of Canberra.

And yet roads in the City of Melton are at capacity, unsafe and projected to get worse.

We desperately need more lanes, better intersections, highway interchanges and major safety upgrades.

With 73 per cent of workers commuting outside the area to get to and from work, serious congestion and safety issues plague City of Melton roads every day.

We are calling on the State Government and opposition to commit to upgrading the major arterial roads. This will get you to and from work safer, enable you to spend more time with family and ensure you're not stuck on gridlocked roads.

What needs to be done?

- Upgrade the Western Highway
- Duplicate the Melton Highway
- Duplicate Hopkins Road
- Duplicate Christies Road
- Duplicate Robinsons Road, Westwood Drive and Calder Park Drive
- Build the Calder Park Interchange

Join Council's campaign.
Sign the petition at
fixourroads.com.au



Fix Our Roads
Now is the Time

Councillors and Wards

CAMBRIDGE WARD



MAYOR

Cr Goran Kesic

0437 241 436

goran.kesic@melton.vic.gov.au



Cr Steve Abboushi

0437 231 680

steve.abboushi@melton.vic.gov.au



Cr Kathy Majdlik

0412 584 058

kathy.majdlik@melton.vic.gov.au

COBURN WARD



Cr Sophie Ramsey

0412 584 067

sophie.ramsey@melton.vic.gov.au



Cr Julie Shannon

0499 801 302

julie.shannon@melton.vic.gov.au



Cr Bob Turner

0412 584 224

bob.turner@melton.vic.gov.au



Cr Ashleigh Vandenberg

0499 801 183

ashleigh.vandenberg@melton.vic.gov.au

WATTS WARD



DEPUTY MAYOR

Cr Lara Carli

0409 951 020

lara.carli@melton.vic.gov.au



Cr Moira Deeming

0499 801 198

moira.deeming@melton.vic.gov.au

Connect with us

MELTON CITY COUNCIL

232 High Street, Melton

193 Caroline Springs Boulevard,
Caroline Springs

31 McKenzie Street, Melton

PO Box 21, Melton VIC 3337

☎ 9747 7200

✉ melton.vic.gov.au

📘 [facebook.com/cityofmelton](https://www.facebook.com/cityofmelton)

📷 [Instagram.com/cityofmeltonofficial](https://www.instagram.com/cityofmeltonofficial)