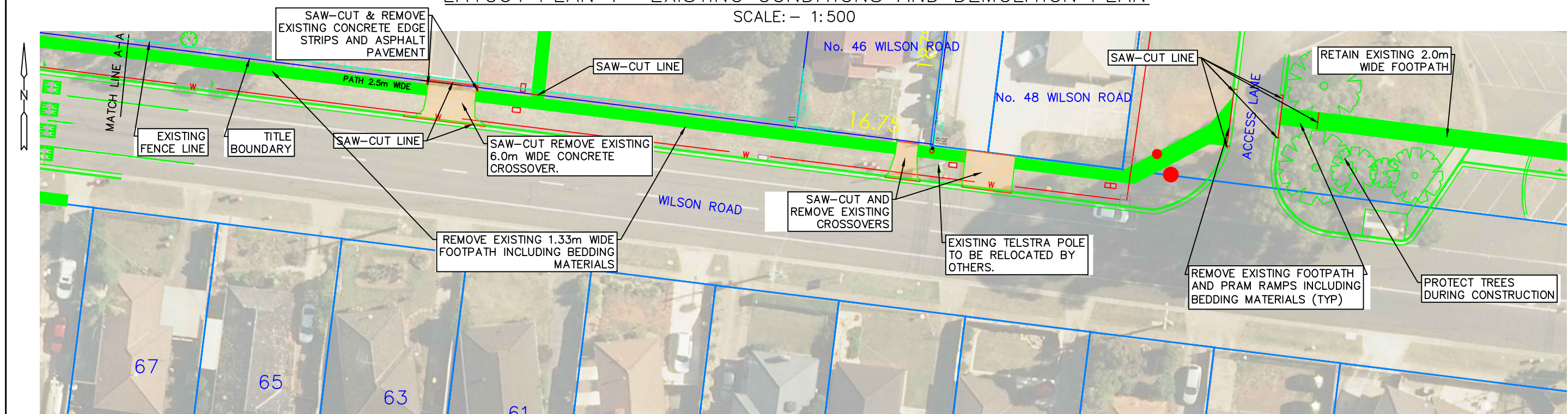




LAYOUT PLAN 1 – EXISTING CONDITIONS AND DEMOLITION PLAN

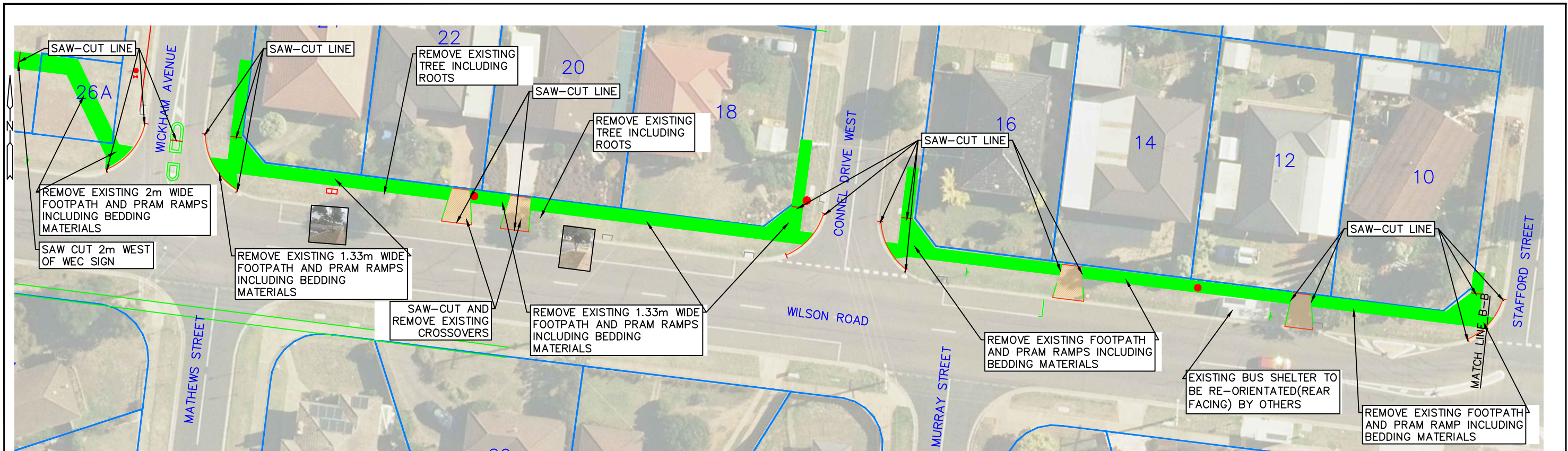
SCALE: – 1:500



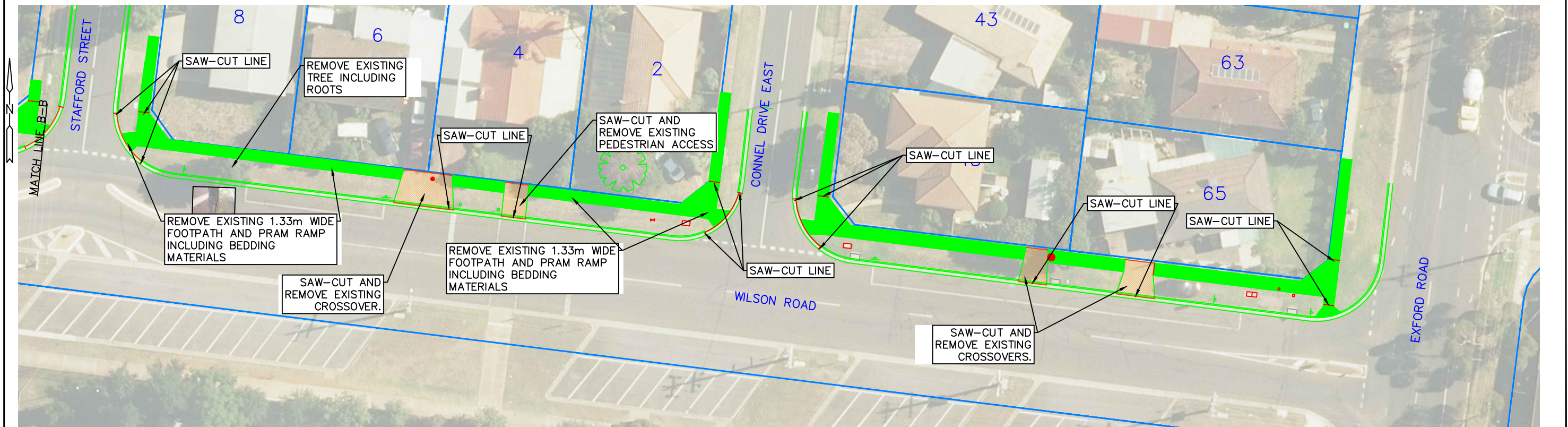
LAYOUT PLAN 2 – EXISTING CONDITIONS AND DEMOLITION PLAN

SCALE: – 1:500

E				<u>GENERAL NOTES</u>	 ENGINEERING SERVICES DEPT	DESIGN	ALEXA	PROJECT RECONSTRUCT FOOTPATH TO 2.5M WIDE ON NORTH SIDE OF ROAD WILSON ROAD, MELTON SOUTH DETAILS LAYOUT PLANS 1 & 2 EXISTING CONDITIONS AND DEMOLITION PLAN	SCALE OF METRES 	
D						DRAWN	ALEXA		SHEET 3 OF 17	PAPER A3
C	----	----	----			CHECKED	M.HUTCHINSON			
B	M.H	29/01/2021	CONSTRUCTION ISSUE			DATE	JULY 2020		FILE NAME SHP0740 PATH SEP FINAL.DWG	
A	M.H	30/07/2020	PRELIMINARY							
ISSUE	APP'D	DATE	AMENDMENT							



LAYOUT PLAN 3 – EXISTING
SCALE: – 1:500



LAYOUT PLAN 4 – EXISTING
SCALE: – 1:500

E				<div>GENERAL NOTES</div>	<div><div>CITY OF</div><div>MELTON</div><div>ENGINEERING SERVICES DEPT</div></div>	DESIGN	ALEXA	<div>PROJECT</div> <div>RECONSTRUCT FOOTPATH TO 2.5M WIDE ON NORTH SIDE OF ROAD</div> <div>WILSON ROAD, MELTON SOUTH</div> <div>DETAILS</div> <div>LAYOUT PLANS 3 & 4 EXISTING AND DEMOLITION</div>	<div>SCALE OF METRES</div> <div>0510</div>		
D						DRAWN	ALEXA		<div>SHEET</div> <div>4 OF 17</div> <div>PAPER</div> <div>A3</div>		
C	----	----	----			CHECKED	M.HUTCHINSON		<div>DRAWING No.</div> <div>A13775</div> <div>REV</div> <div>A</div>		
B	M.H	29/01/2021	CONSTRUCTION ISSUE			DATE	JULY 2020		<div>FILE NAME</div> <div>SHP0740 PATH SEP FINAL.DWG</div>		
A	M.H	30/07/2020	PRELIMINARY								
ISSUE	APP'D	DATE	AMENDMENT								