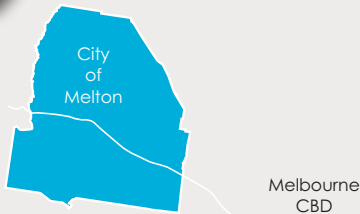




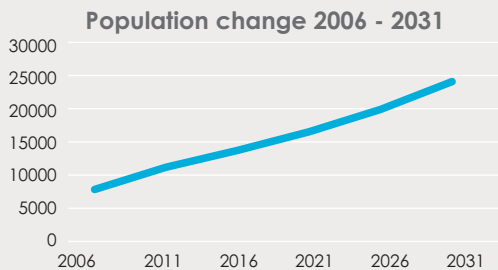
Location & Growth



- > Situated in one of the fastest growing regions in Australia with a population of 127,937
- > By 2031, the population will grow to more than 240,000 (around 100% increase)
- > Growing rapidly at 4.3% per year (or 5,028 residents), almost double the rate of Greater Melbourne and Australia
- > Population has more than doubled in the last 10 years



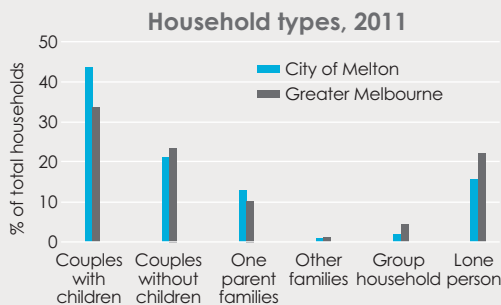
Population



- > Approximately, 33 families per week move into the City of Melton (1,734 per year)
- > 42 babies are born per week (2,172 per year)
- > Young population, median age is 32 (Victorian, 37)
- > Almost 80% of the population is aged less than 49 years
- > The largest population age groups are:
 - 0-4 years old (11,269)
 - 30-34 years old (11,237)
 - 35-39 years old (10,950)



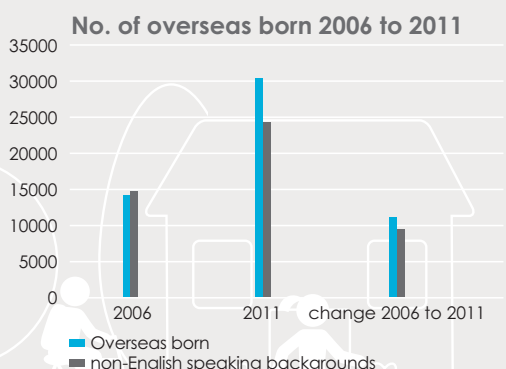
Households



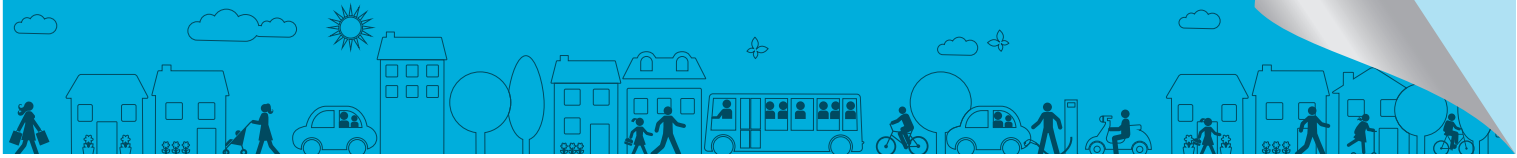
- > There are more than 36,000 households
- > Household composition is:
 - 43% couples with children (Greater Melbourne, 34%)
 - 21% couples without children (Greater Melbourne, 23.5%)
 - 13% one parent families (Greater Melbourne, 10%)
- > Average children per family 1.9



Diversity

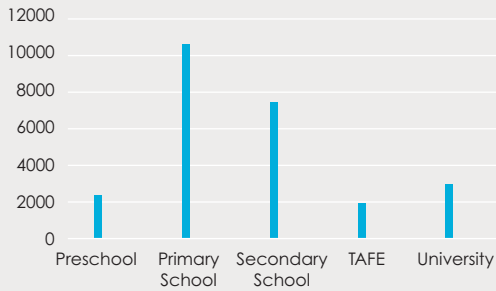


- > Between 2006-2011, the number of overseas born residents increased from 19,184 to 30,322 (+11,138) which represents 28% of the total population
- > Residents from non-English speaking backgrounds increased by 9,526 to 24,259 (22% of the total population)
- > Top five countries of birth: India, the Philippines, New Zealand, Malta and Vietnam (accounting for 8% of the total population)
- > Top five religions: Catholic, Anglican, Islam, Buddhism and Hinduism
- > In 2011, no religious affiliation increased by 5,697 to 18,689 (17%)
- > 787 Aboriginal or Torres Strait Islander* people live in the City of Melton, an increase of around 50% since 2006



Education

Education, 2011



- > 24% of the population attend an educational institution
- > There are 10,643 primary schoolers and 7,452 secondary schoolers
- > 46% have completed Year 12 (Greater Melbourne, 55%)
- > University attendance is 3% (Greater Melbourne, 5%)
- > Bachelor or Higher Degree qualification is 14% (Greater Melbourne, 24%)
- > Vocational qualification is 20% (Greater Melbourne, 15%)



Employment

Occupation of employment, 2011

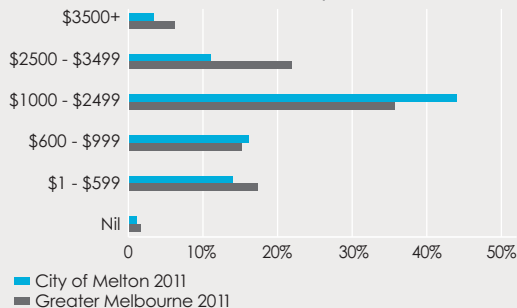


- > 50,936 people are employed, of which 67% are working full time and 30% part time
- > Most work in clerical and technicians/trade occupations
- > 14% work in professional occupations (Greater Melbourne, 24% and Victoria, 22%)
- > 66% travel outside the area to work
- > 75% travel to work by car (Greater Melbourne, 65%)
- > 8% travelled by train to work (Greater Melbourne, 10%)
- > One in ten residents are involved in some form of voluntary work



Income

Household Incomes, 2011



- > Fewer households (15%) earn low income (Greater Melbourne, 19%)
- > Fewer households (14.5%) earn high income (Greater Melbourne, 19%)
- > Median weekly household income is \$1,363 (Victoria, \$1,216)
- > Median monthly mortgage repayment is \$1,733 (Victoria, \$1,700)
- > 18% of households are experiencing mortgage stress (Victoria, 10%)
- > SEIFA index 1002 (Australia 1020)[#]

References

- > ABS Census of Population and Housing 2011
- > id. City of Melton Community Profile
- > id. City of Melton Population Forecasts
- > Population Diversity in Victoria by Local Government Areas 2011

Every care has been taken to ensure the information in this document is correct as at June 2014. However Melton City Council does not accept any liability to any person or organisation for the use of information in this document. Please note that there is potential for minor revisions of data with this profile.

* Due to issues with non-identification and undercounting in the 2011 Census, the number could double.

[#] SEIFA index figures above 1,000 are above the Australian average and so relatively less disadvantaged, while index figures below 1,000 indicate areas of relatively greater disadvantage when compared to the nation.

For further information on City of Melton demographics,
please click here