

PLAYSPACE ASSESSMENT

ORBIS AVENUE RESERVE 46 CITY VISTA COURT FRASER RISE



NAME: Orbis Avenue Reserve
ADDRESS: 46 City Vista Court
SUBURB: Fraser Rise
OPEN SPACE LEVEL: District
CURRENT PSS HIERARCHY: Local (Low)
POTENTIAL PPS HEIRARCHY: District
YEAR INSTALLED: 2015

Rating	1	2	3	4	5	SCORE	N/A	Comments
PLAY TYPE:								
Presence of Social Play Opportunities		✓				2		Not much except for dual swings
Presence of Physical Play Opportunities			✓			3		Limited - structure only has a small range of play elements and other than the structure there is only the swings, no additional elements for jumping, balance, rocking, or spinning. Integrated landscape and nature play would also help
Presence of Cognitive Play Opportunities	✓					1		Very little - abacus and broader park
Presence of Imaginative Play Opportunities		✓				2		Limited - shop front again nature play inclusion would boost this type of play
SCORE:						8		

PLAY VALUE:								
Presence of Open-ended/Adaptive Play	✓					1		Not much at all, broader park might provide some
Access to Loose Materials			✓			3		Softfall mulch only
Opportunity for Risk/Skill Graduation			✓			3		Very limited, particularly for older children and young people
Presence of Different Types of Movement		✓				2		Not much and needs more (refer physical play)
Relationships between elements		✓				2		Ok, but limited by range of activities and not well integrated
Opportunities to explore			✓			3		Possibly broader park
SCORE:						14		

Rating	1	2	3	4	5	SCORE	N/A	Comments
AGE RANGE SUITABILITY:								
Toddler (Under 3)		✓				2		Very little suitability here except swings
Junior (4-7 years)			✓			3		Most suited to this age group but again limited by scale and diversity of play experience
Senior (8-13 years)		✓				2		Very limited challenge for this age group
Youth (14 + years)						0	✓	Not suited
Across Generations		✓				2		Limited - needs improving
SCORE:						9		

ACCESS:								
Possibility to connect via shared path / cycle trail			✓			3		On edge of football ground so connects to local area via footpaths on other sides
Car Park (with accessible parking)						0	✓	None
Neighbourhood access with little or no barriers (ie. busy road / waterway)				✓		4		Local residential area with large sporting facility to one side
Pathway to the Playspace (Site) at least 1.2m wide				✓		4		Main path access
Pathway within the Playspace (Site) at least 1.2m wide						0	✓	None
Boundary Fence / Clear buffer or barrier			✓			3		Grassed buffer / garden
Accessible Activities						0	✓	None
SCORE:						14		

Rating	1	2	3	4	5	SCORE	N/A	Comments
PLAYSPACE CONTEXT:								
Fencing			✓			3		Grassed buffer / garden
Playspace Accessible Edging	✓					1		Play equipment edged but creates a barrier
Response to Surrounding Landscape			✓			3		Set into park
Visual Surveillance across Playspace				✓		4		Good clear veiws
Location on Site			✓			3		Suitable location set-in
Hard surfacing for bikes, and scootering			✓			3		Just main path although some linkages in recreant development of the sporting facility
SCORE:						17		

AMENITY								
Grassed Areas for Running or Ball Play				✓		4		Some grassed area adjacent to playspace with clear boundaries
Grassed Areas for Sitting		✓				2		No tree shade so very exposed presently
Shade (Natural)	✓					1		Trees are present but further development required
Shade (Structural)		✓				2		Local standard shelter provided
Artwork or Connection to Local Community						0	✓	None
Seating / Tables (Accessible)		✓				2		Within shelter, none provided within the broader reserve.
Bins						0	✓	TBC
Signage						0	✓	None
BBQs						0	✓	None
Toilets						0	✓	Located within the adjoining sportsground
Fitness / Gym Equipment						0	✓	None, although opportunity if further development occurs.
SCORE:						11		

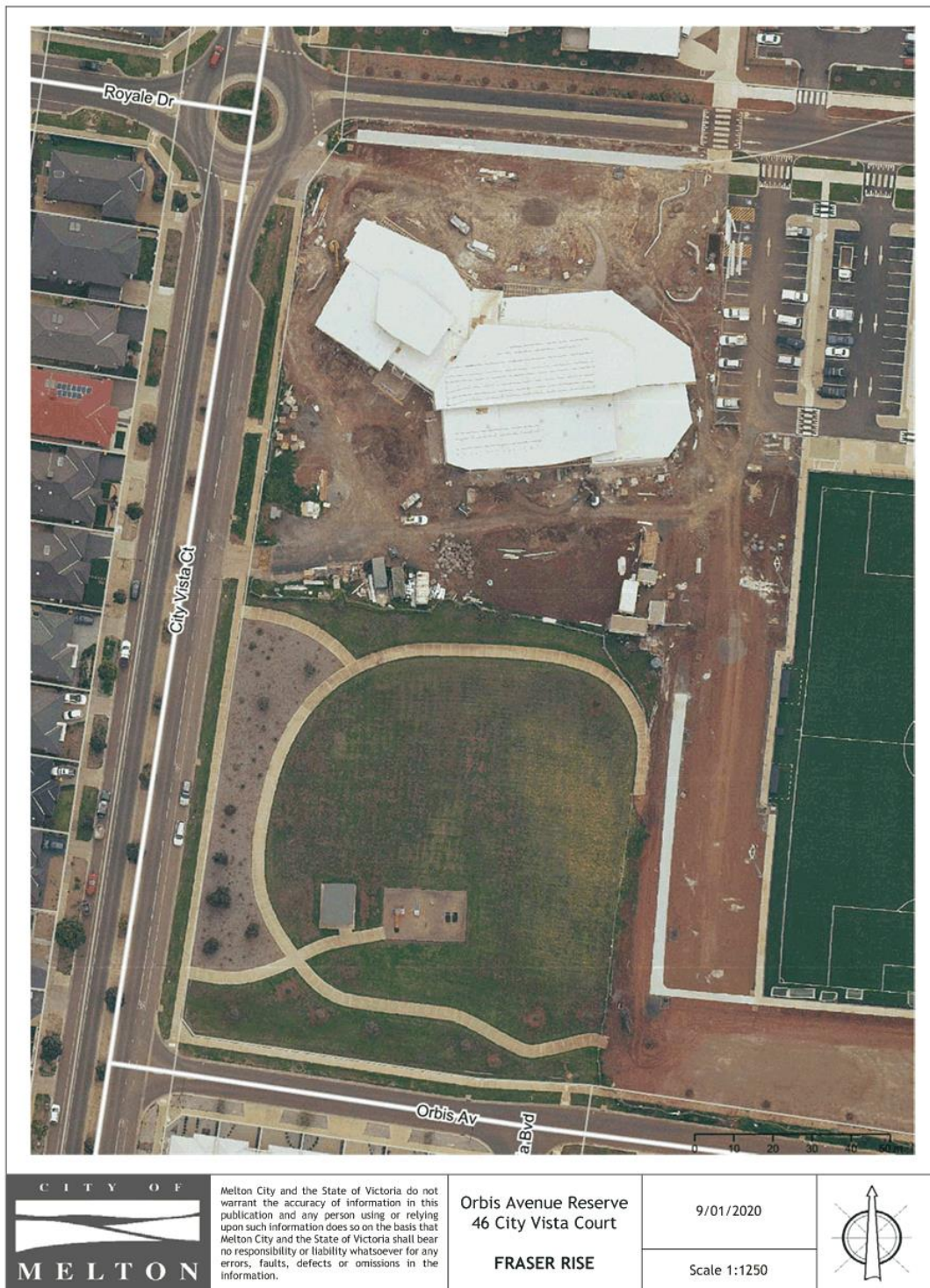
COMPLEMENTARY PLAY OPPORTUNITIES IN LOCALITY:							
		✓				2	Playspaces in local area all low level, apart from Goulding Park and mostly of a similar nature in terms of play

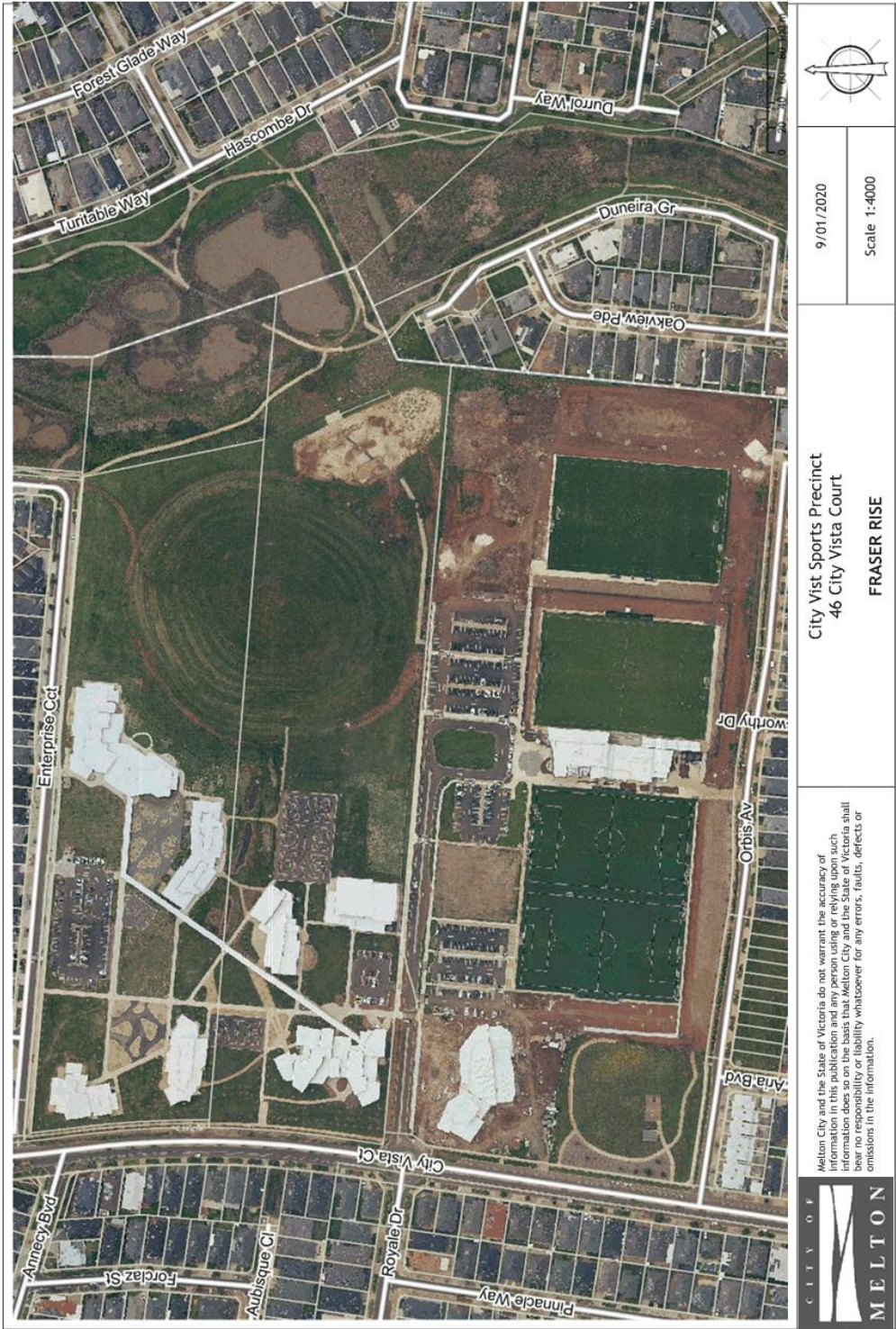
TOTAL SCORE:

75

ADDITIONAL COMMENTS:

Given its location this should be developed as a District Level playspace, however at the moment the level of development is pretty low in the playspace. Not a varied or interesting range of equipment and certainly no additional facilities for young people such as basketball court, parkour or skate. This should be improved as time goes on given the playspace location near the sportsground, community centre and school.





PHOTOS:



PLAYSPACE ASSESSMENTS:

RATING KEY	<i>5 = Excellent</i>
	<i>4 = Very Good</i>
	<i>3 = Good</i>
	<i>2 = Satisfactory</i>
	<i>1 = Poor</i>
	<i>n/a = Element for consideration not present</i>

PLAY VALUE:

1. Demonstrates a level of 'inclusive design' appropriate to its hierarchy classification
2. Is integrated with its broader landscape context in a way that expands opportunities for play beyond equipment
3. Demonstrates a level of 'open-ended' design, 'flexibility' or 'adaptability' for children to direct their own play appropriate to its hierarchy classification
4. There is the presence of 'loose materials' to be used as currency for play
5. Demonstrates graduating levels of 'skill challenge' and the incorporation of opportunities for risk appropriate to its hierarchy classification
6. Demonstrates a range of types of 'movement' through play
7. Demonstrates a level of 'complexity' or 'diversity' of experience or activity appropriate to its hierarchy classification
8. There is a good sense of 'continuity' or 'flow' between elements or activities
9. There are opportunities to 'explore' and 'discover' to learn
10. Encourages different generations to participate in play