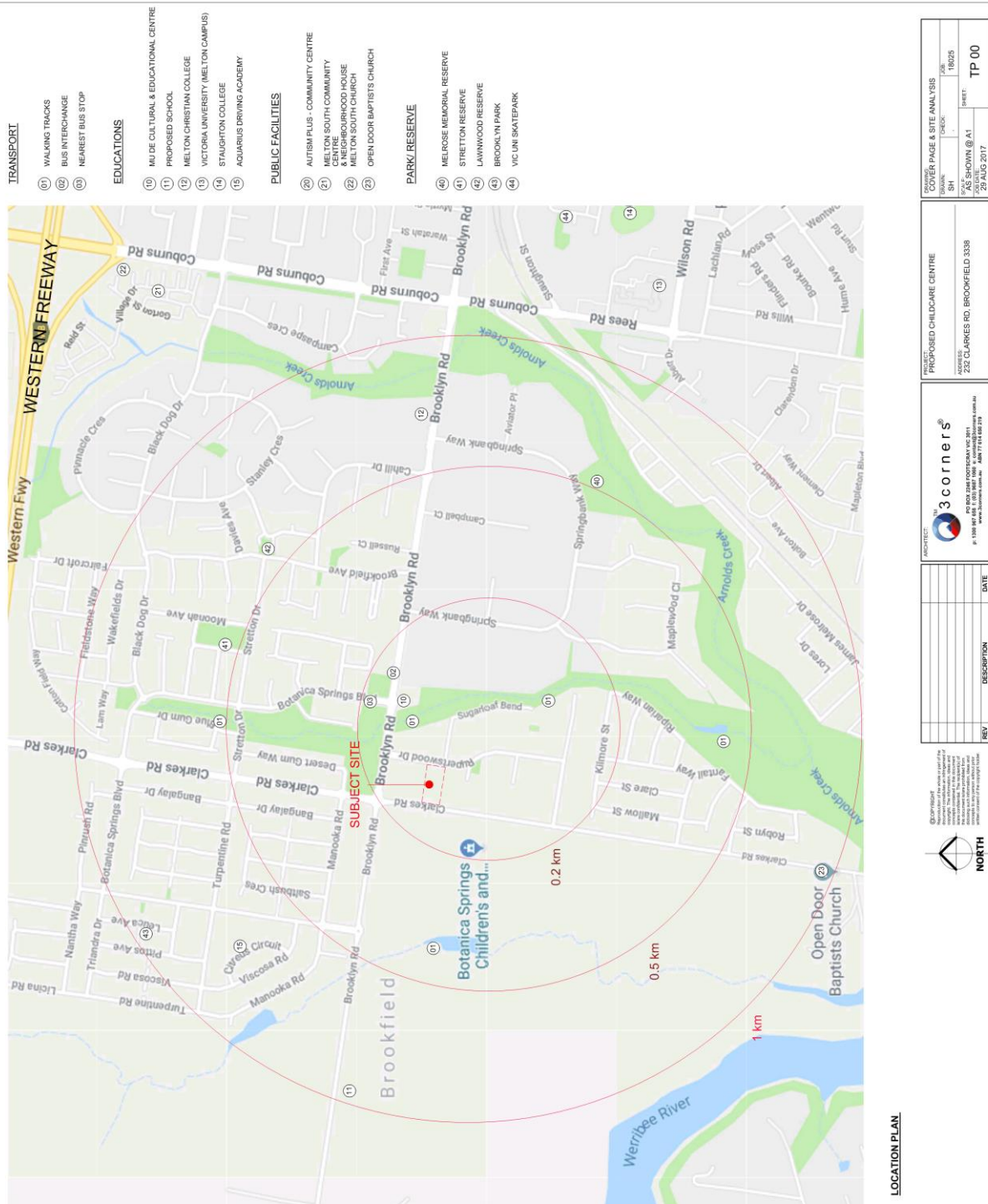


Item 12.10 Planning Application PA 2018/6342/1 - Use and development of the land for a Child Care Centre with associated car parking and landscaping and erect and display business identification signage At 232 Clarks Road Brookfield

Appendix 2 Development Plans - dated 29 August 2017









- DESIGN RESPONSE**
1. PROPOSED CHILDCARE CENTRE, SINGLE STOREY BUILDING.
  2. SUFFICIENT CAR SPACES PROVIDED ONSITE.
  3. NEW LANDSCAPING WILL BE PROVIDED TO IMPROVE SITE & SURROUNDING AREA.
  4. ROOF FORM AND MATERIALS SELECTED TO COMPLEMENT NATURE AND SURROUNDINGS NEIGHBOURHOOD.
  5. STREET SETBACK OF OVER 12m TO ALLOW FOR AN ONSITE STREETSCAPE AND REDUCE BUILDING DOMINANCE WITHIN THE STREETSCAPE.

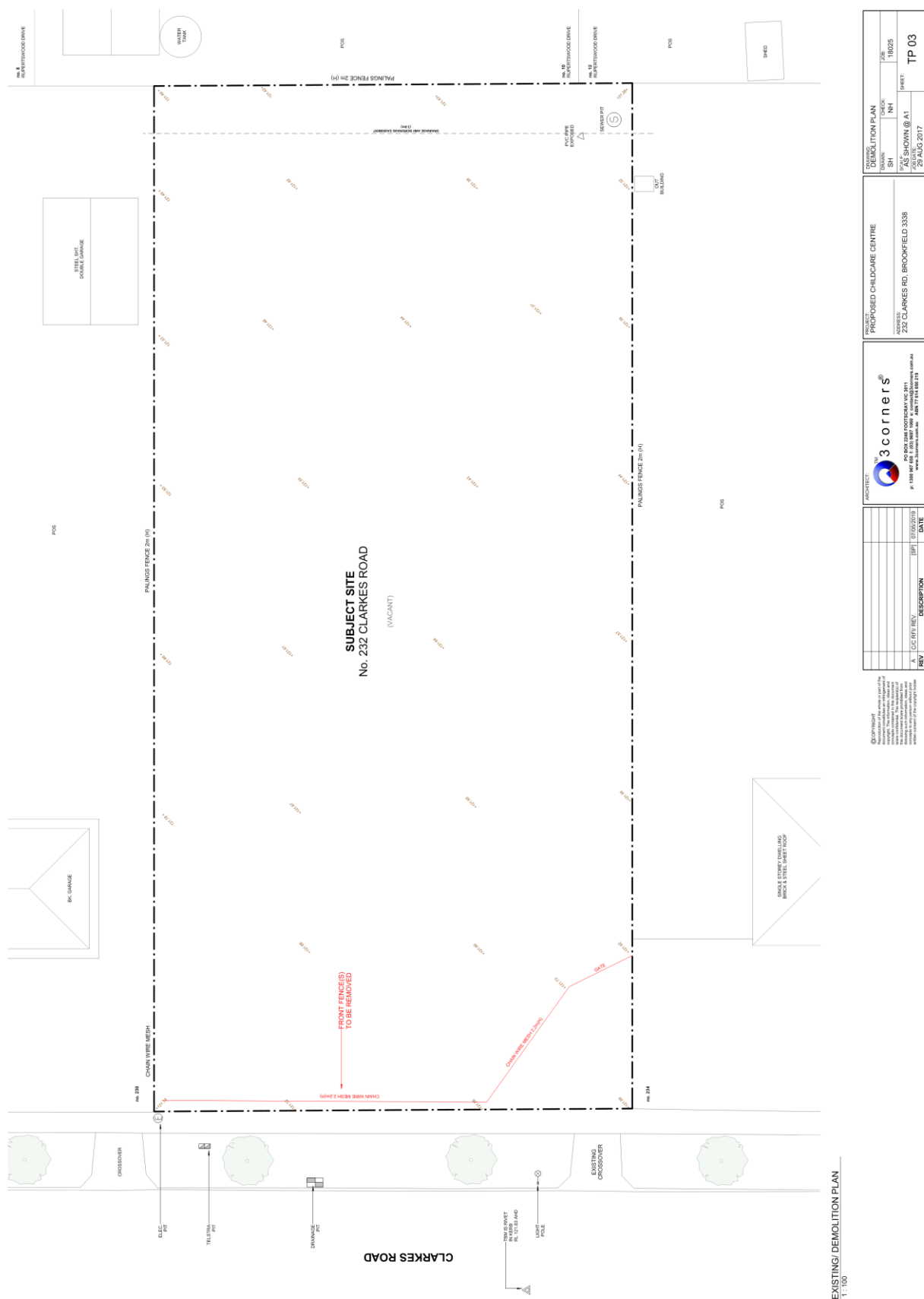
DESIGN RESPONSE  
1:200

<b>3 corners</b> ARCHITECTS PO BOX 2088 COTTESLOUGH VIC 3011 P 1300 897 100 F 03 9477 1000 www.3corners.com.au ABRN 771 650 519		<b>PROJECT</b> PROPOSED CHILDCARE CENTRE ADDRESS: 232 CLARKES RD, BROOKFIELD 3338		<b>DESIGN RESPONSE</b> DESIGNED BY: SH CHECKED BY: NH DATE: 18/02/20 SHEET: TP 02	
<b>REVISIONS</b>		<b>DATE</b>			
REV	DESCRIPTION	DATE			
A	C/S: FIVE	18/02/2020			

© COPYRIGHT  
3corners architects  
This drawing is the property of 3corners architects and is not to be reproduced, stored in a retrieval system, or transmitted in any form or by any means, electronic, mechanical, photocopying, recording, or by any information storage and retrieval system, without the prior written permission of 3corners architects.

3 FEBRUARY 2020

Appendix 2 Development Plans - dated 29 August 2017



## 3 FEBRUARY 2020

Appendix 2 Development Plans - dated 29 August 2017







# ORDINARY MEETING OF COUNCIL

3 FEBRUARY 2020

Item 12.10 Planning Application PA 2018/6342/1 - Use and development of the land for a Child Care Centre with associated car parking and landscaping and erect and display business identification signage At 232 Clarkes Road Brookfield

Appendix 2 Development Plans - dated 29 August 2017

