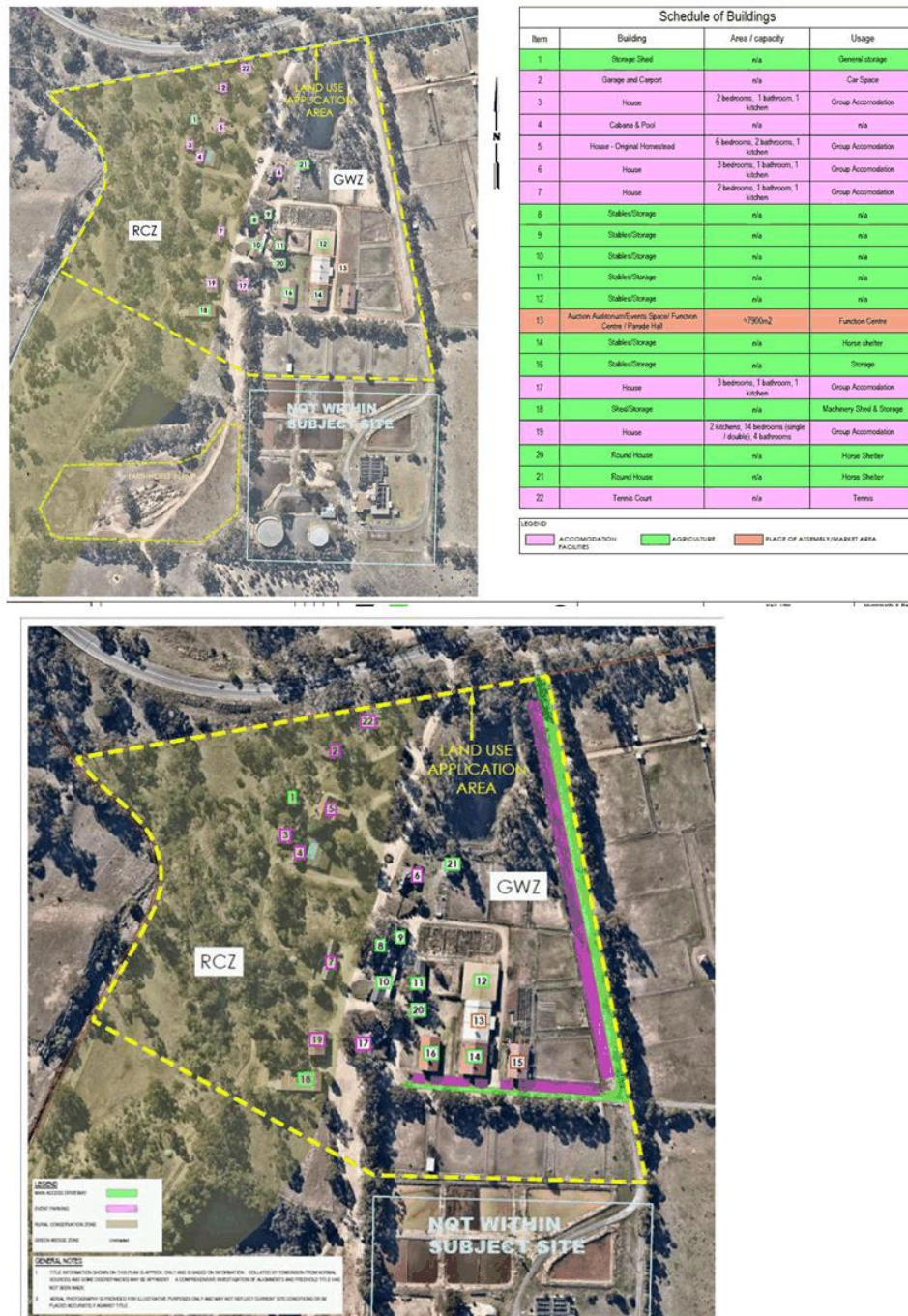


## Appendix 3 – Plans of the proposal



First entrance, from Diggers Rest-Coimadai Road. Area speed limit 60km. This entrance runs along the eastern side of the existing built infrastructure and provides parking and access to the entire site.



Second entrance from Diggers Rest-Coimadai Road, leads directly into the built infrastructure area with direct access to all residential buildings.

