

**12.4 RESPONSE TO NOTICE OF MOTION 464 - PARKING CONCERNS STIRLING TERRACE, MELTON WEST**

Author: Tom Lay - Traffic Engineer

Presenter: Luke Shannon - General Manager Planning &amp; Development

**PURPOSE OF REPORT**

To report to Council the results of the consultation in relation to the proposed indented parking bays in Stirling Terrace, Melton West.

**RECOMMENDATION:**

That Council:

1. Do not construct indented parking bays in Stirling Terrace, Melton West.
2. Install 'No Stopping' zones (applying 8.00-9.30am and 2.30-4.00pm school days) along the west side of Stirling Terrace as shown in **Appendix 1**.

---

**REPORT****1. Executive Summary**

This report presents the results of the consultation undertaken in relation to Notice of Motion 464 relating to parking issues in Stirling Terrace, Melton West.

A survey of residents in Stirling Terrace and Meadow Glen Drive and the two schools (Catholic Regional College and St Catherine's Primary School) was undertaken. Council officers also surveyed parents parking in Stirling Terrace. The residents in Stirling Terrace did not support the proposed indented parking bays as there are concerns that it may lead to undesirable activities at night. Both schools and parents surveyed supported the proposed indented parking bays.

Given the number of objections received from the residents of Stirling Terrace and the availability of an alternative option to constructing indented parking bays, it is recommended that 'No Stopping' zone be installed as shown in **Appendix 1**.

**2. Background/Issues****2.1 Background**

Stirling Terrace is a 'Part Way is OK' location that encourages parents to drop off and pick up their children away from the congested Bulmans Road where the two schools (Catholic Regional College and St Catherine Primary School) are located. This is creating issues with parents parking illegally in Stirling Terrace waiting to collect children and inconveniencing residents by blocking traffic.

At the Council meeting on 6 March 2017, Council resolved via a Notice of Motion (464) 'That Council Engineers prepare a brief report regarding parking concerns in Stirling Terrace, Melton West and the streets surrounding Catholic Regional College and St Catherine's Primary School.'

A report was prepared and presented at the Council meeting on 1 May 2017 with the following recommendations:

That Council:

- a. Construct indented parking bays in Stirling Terrace to allow vehicles to park off the street and avoid blocking the road.
- b. Construction of these parking bays being included in the Capital Works Program for 2017/18 within the Road Safety Around Schools program.

Council resolved the following:

- a. A decision on the construction of the indented parking bays in Stirling Terrace be deferred until consultation with the residents directly affected has taken place
- b. The schools be consulted
- c. A further report be presented to Council
- d. The amount of \$30,000 to remain in the 2017/18 Capital Works Program pending the outcome of the report.

## 2.2 Consultation undertaken

A survey of residents in Stirling Terrace and Meadow Glen Drive and the two schools (Catholic Regional College and St Catherine's Primary School) was undertaken. Council officers also surveyed parents parking in Stirling Terrace. The results were as follows:

- Out of the nine residents surveyed in Stirling Terrace, seven residents responded and did not support the proposed indented parking bays in Stirling Terrace.
- Out of the eight residents surveyed in Meadow Glen Drive, three residents responded and supported the proposed indented parking bays in Stirling Terrace.
- Both Catholic Regional College and St Catherine's Primary School supported the proposed indented parking bays in Stirling Terrace.
- Eight parents who were parked in Stirling Terrace supported the proposed indented parking bays in Stirling Terrace.

Some of the comments provided by residents of Stirling Terrace who did not support the proposed indented parking bays were:

- 'concerned about heavy traffic congestions....concerned about attracting late night cars parking and youth hanging out at night'
- 'we believe that parking bays will bring people to park along our street of a night and may increase crimes or other issues in our area'
- 'why do we have to have a permanent car park opposite our house for the sake of 15 minutes drop off in the morning and afternoon? Who will police these car parks all hours of the day/night when louts decide to park and hangout there?'
- 'we are very concerned for the afterhours which will attract people to park at all hours of the day and night. We would not have any problem if there were parking signs between the hours of school times am and pm'

Refer to **Appendix 2** for plan showing residents surveyed.

## 2.3 Alternative Option

An alternative option to provide greater control over parking in Stirling Terrace and avoid the construction of indented parking bays is modify the existing parking restrictions.

This would entail installing a 'No Stopping' zone along the west side of Stirling Terrace, which applies during school drop off and pick up times (between 8.00 and 9.30am and 2.30 and 4.00pm on school days). Parents would still be able to park on the east side of Stirling

Terrace and the west side would be left clear for traffic. The proposed parking restrictions are shown in **Appendix 1**.

### 3. Council and Wellbeing Plan Reference and Policy Reference

The Melton City Council 2017-2021 Council and Wellbeing Plan references:

3. A well planned and built City: A City with a clear vision to manage growth in a sustainable and accessible way

3.2 *Community facilities, infrastructure and services that are equitably planned for, provided and maintained.*

### 4. Financial Considerations

The cost of each option is as follows:

- Option 1: The estimated cost to install 'No Stopping' signs is \$1,500
- Option 2: The estimated cost to construct the indented bays is \$30,000
- Option 3: No expense to Council if no action is undertaken.

### 5. Consultation/Public Submissions

Residents in Stirling Terrace and Meadow Glen Drive and the two schools (Catholic Regional College and St Catherine's Primary School) were surveyed on the issue of the proposed indented parking bays.

If Council adopts the proposed recommendation to install parking restrictions, it is proposed that all residents surveyed and the schools be notified in writing of the changes to parking restrictions.

### 6. Risk Analysis

Each option proposed creates potential risks as follows:

- Option 1: Greater parking enforcement and infringement notices are required to implement this option, potentially leading to issues with disgruntled motorists.
- Option 2: Residents in Stirling Terrace concerns have not be addressed.
- Option 3: Continuation of current issues.

### 7. Options

The following options are provided:

- Option 1: Install parking restrictions as shown in **Appendix 1**.
- Option 2: Construct indented parking bays on the eastern side of Stirling Terrace (i.e. reserve side).
- Option 3: Do nothing.

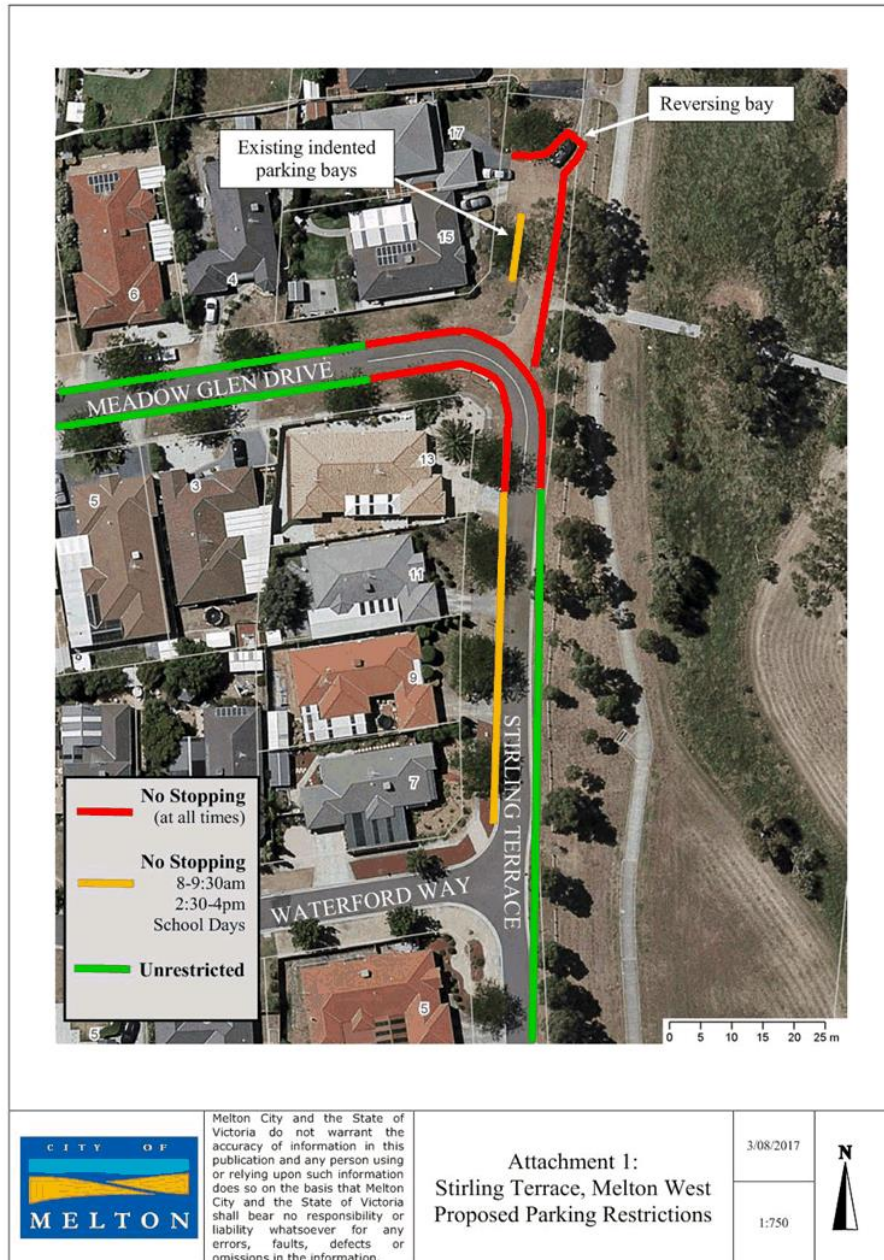
### LIST OF APPENDICES

1. Locality Plan with proposed parking restrictions - dated 3 August 2017
2. Location of proposed indented parking bays and consulted residents - dated 3 August 2017

**Ordinary Meeting of Council**

21 AUGUST 2017

Item 12.4 Response to Notice of Motion 464 - Parking Concerns Stirling Terrace, Melton West  
 Appendix 1 Locality Plan with proposed parking restrictions - dated 3 August 2017

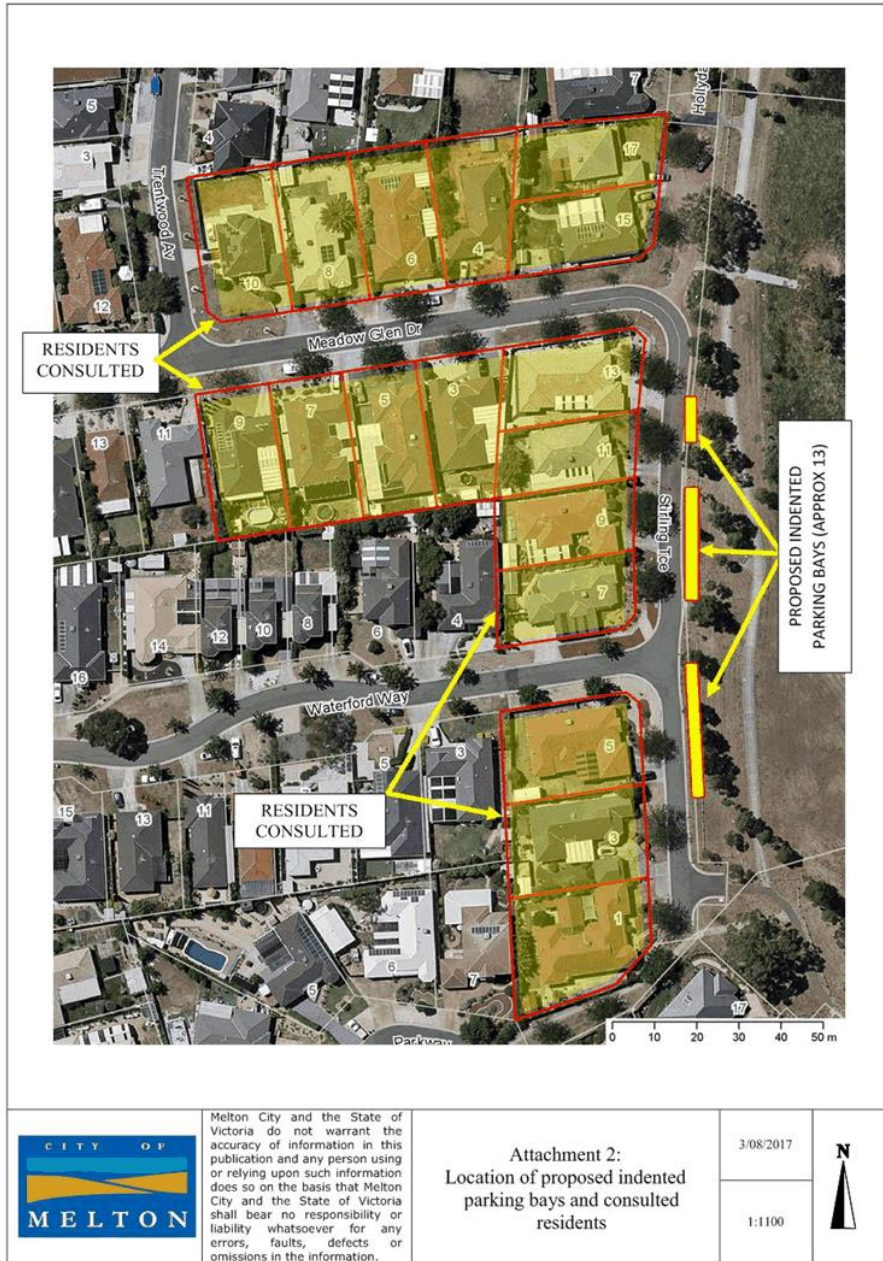


Ordinary Meeting of Council

21 AUGUST 2017

Item 12.4 Response to Notice of Motion 464 - Parking Concerns Stirling Terrace, Melton West

Appendix 2 Location of proposed indented parking bays and consulted residents - dated 3 August 2017



Melton City and the State of Victoria do not warrant the accuracy of information in this publication and any person using or relying upon such information does so on the basis that Melton City and the State of Victoria shall bear no responsibility or liability whatsoever for any errors, faults, defects or omissions in the information.

Attachment 2:  
Location of proposed indented parking bays and consulted residents

3/08/2017

1:1100

