



Disclaimer & Use:
 This publication may be of assistance to you but the State of Victoria, Melton City Council and its employees do not guarantee that the publication is without flaw of any kind or is wholly appropriate for your particular purpose and therefore disclaims all liability for any error, loss or other consequence which may arise from you relying on any information in the publication.

Data Source:
 Melton City Council. Contains Viomap information
 © The State of Victoria



Projection: GDA1994, MGA z55
 Scale 1:500

19 Rockfern Cr
CURRENT ZONING

Map Produced 22/10/2018



Disclaimer & Use:
 This publication may be of assistance to you but the State of Victoria, Melton City Council and its employees do not guarantee that the publication is without flaw of any kind or is wholly appropriate for your particular purpose and therefore disclaims all liability for any error, loss or other consequence which may arise from you relying on any information in the publication.

Data Source:
 Melton City Council. Contains Viomap information
 © The State of Victoria



19 Rockfern Cr
PROPOSED ZONING

Projection: GDA1994, MGA z55
 Scale 1:500

Map Produced 22/10/2018



Disclaimer & Use:
 This publication may be of assistance to you but the State of Victoria, Melton City Council and its employees do not guarantee that the publication is without flaw of any kind or is wholly appropriate for your particular purpose and therefore disclaims all liability for any error, loss or other consequence which may arise from you relying on any information in the publication.

Data Source:
 Melton City Council. Contains Viomap information
 © The State of Victoria



Projection: GDA1994, MGA z55
 Scale 1:1000

56 Cambrian Way

CURRENT ZONING

Map Produced 22/10/2018



Disclaimer & Use:
 This publication may be of assistance to you but the State of Victoria, Melton City Council and its employees do not guarantee that the publication is without flaw of any kind or is wholly appropriate for your particular purpose and therefore disclaims all liability for any error, loss or other consequence which may arise from you relying on any information in the publication.

Data Source:
 Melton City Council. Contains Viomap information
 © The State of Victoria



56 Cambrian Way
PROPOSED ZONING

Projection: GDA1994, MGA z55
 Scale 1:1000

Map Produced 22/10/2018



Disclaimer & Use:
 This publication may be of assistance to you but the State of Victoria, Melton City Council and its employees do not guarantee that the publication is without flaw of any kind or is wholly appropriate for your particular purpose and therefore disclaims all liability for any error, loss or other consequence which may arise from you relying on any information in the publication.

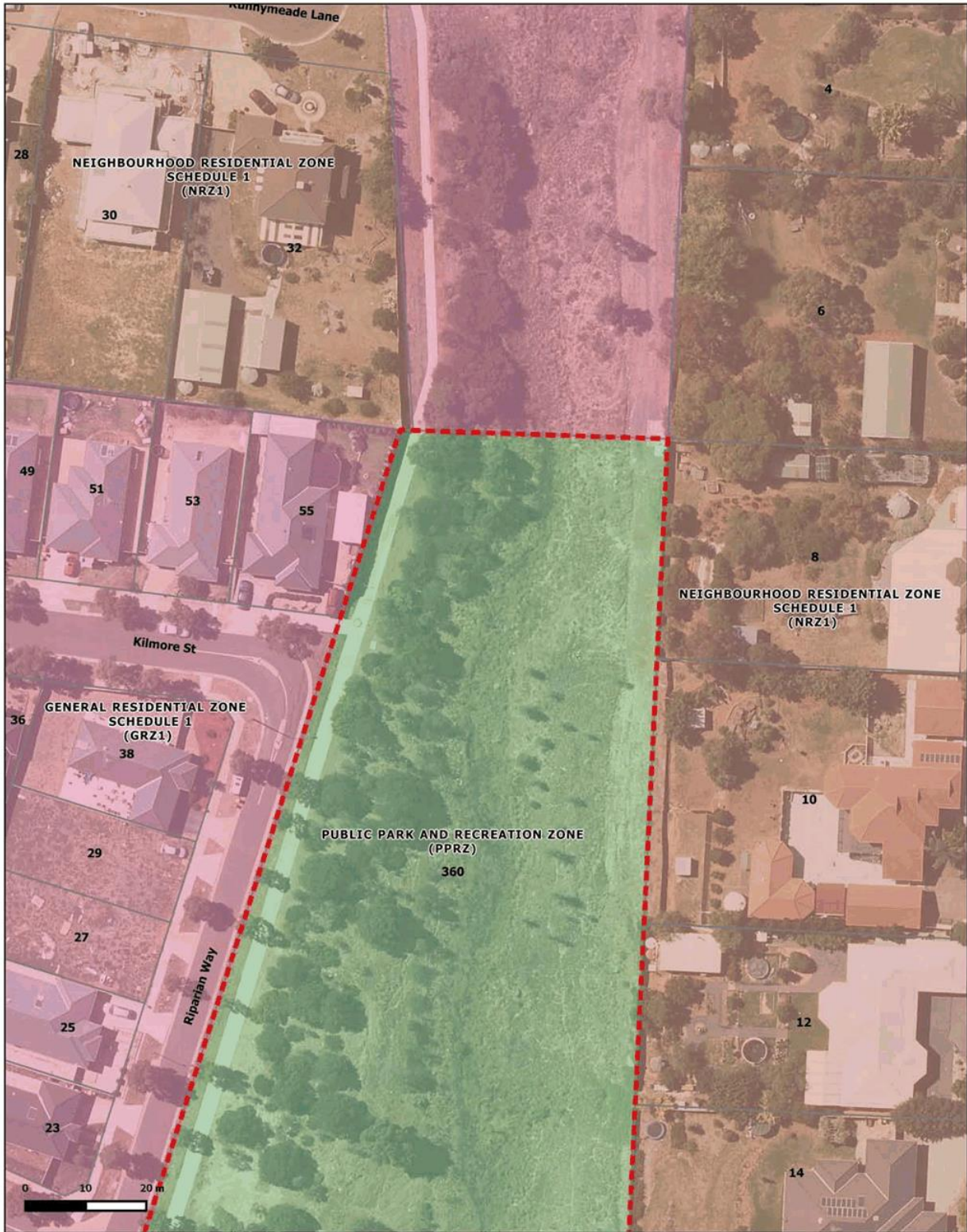
Data Source:
 Melton City Council. Contains Viomap information
 © The State of Victoria



Projection: GDA1994, MGA z55
 Scale 1:1000

360 Clarkes Rd
CURRENT ZONING

Map Produced 22/10/2018



Disclaimer & Use:
 This publication may be of assistance to you but the State of Victoria, Melton City Council and its employees do not guarantee that the publication is without flaw of any kind or is wholly appropriate for your particular purpose and therefore disclaims all liability for any error, loss or other consequence which may arise from you relying on any information in the publication.

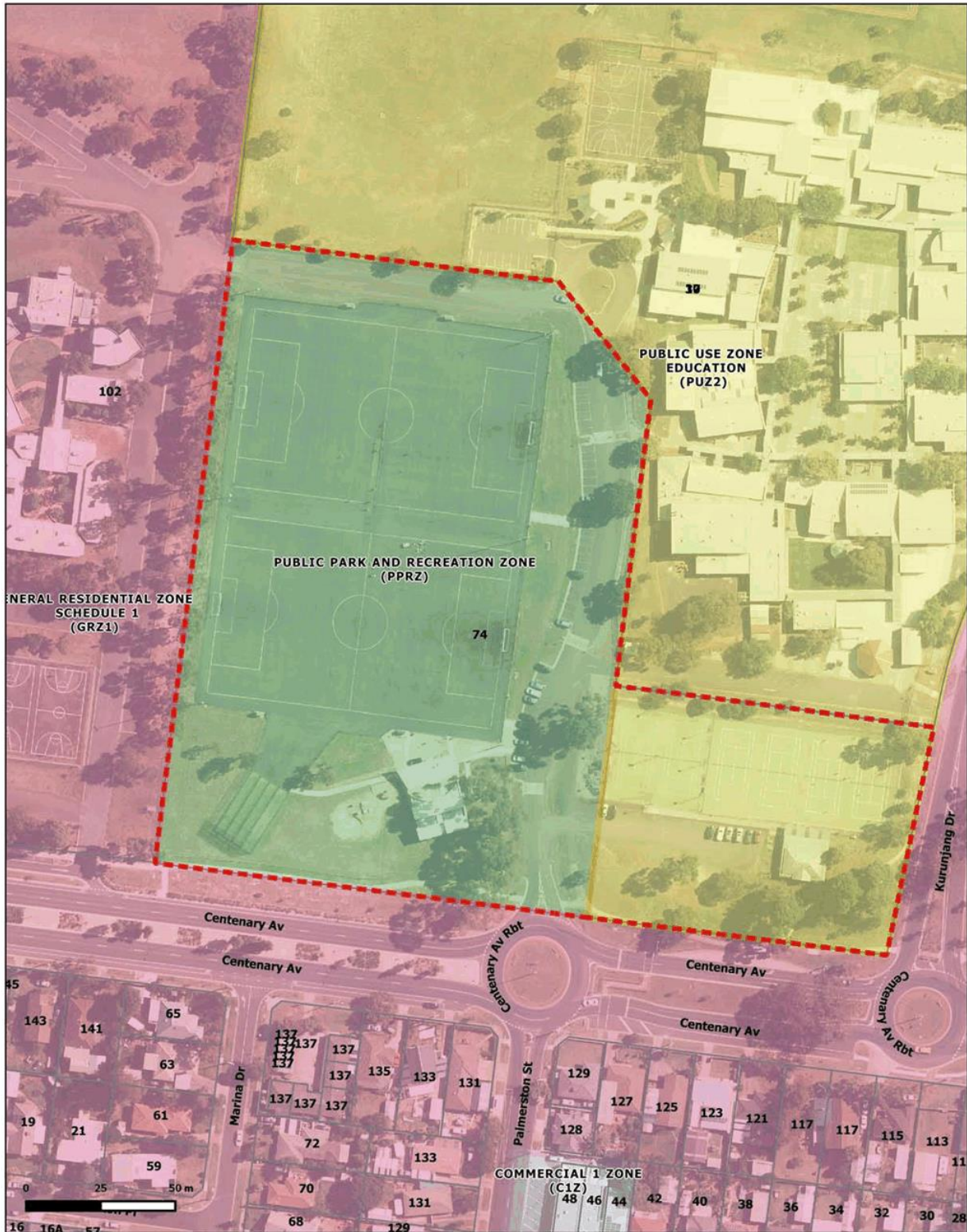
Data Source:
 Melton City Council. Contains Viomap information
 © The State of Victoria



Projection: GDA1994, MGA z55
 Scale 1:1000

360 Clarkes Rd
PROPOSED ZONING

Map Produced 22/10/2018



Disclaimer & Use:
 This publication may be of assistance to you but the State of Victoria, Melton City Council and its employees do not guarantee that the publication is without flaw of any kind or is wholly appropriate for your particular purpose and therefore disclaims all liability for any error, loss or other consequence which may arise from you relying on any information in the publication.

Data Source:
 Melton City Council. Contains Viomap information
 © The State of Victoria



74-100 Centenary Av
CURRENT ZONING

Projection: GDA1994, MGA z55
 Scale 1:1500

Map Produced 22/10/2018



Disclaimer & Use:
 This publication may be of assistance to you but the State of Victoria, Melton City Council and its employees do not guarantee that the publication is without flaw of any kind or is wholly appropriate for your particular purpose and therefore disclaims all liability for any error, loss or other consequence which may arise from you relying on any information in the publication.

Data Source:
 Melton City Council. Contains Viomap information
 © The State of Victoria



74-100 Centenary Av
CURRENT ZONING

Projection: GDA1994, MGA z55
 Scale 1:1500
 Map Produced 22/10/2018



Disclaimer & Use:
 This publication may be of assistance to you but the State of Victoria, Melton City Council and its employees do not guarantee that the publication is without flaw of any kind or is wholly appropriate for your particular purpose and therefore disclaims all liability for any error, loss or other consequence which may arise from you relying on any information in the publication.

Data Source:
 Melton City Council. Contains Viomap information
 © The State of Victoria



Projection: GDA1994, MGA z55
 Scale 1:1500

26-42 Richard Rd
22A Reynolds Pl
CURRENT ZONING

Map Produced 22/10/2018



Disclaimer & Use:
 This publication may be of assistance to you but the State of Victoria, Melton City Council and its employees do not guarantee that the publication is without flaw of any kind or is wholly appropriate for your particular purpose and therefore disclaims all liability for any error, loss or other consequence which may arise from you relying on any information in the publication.

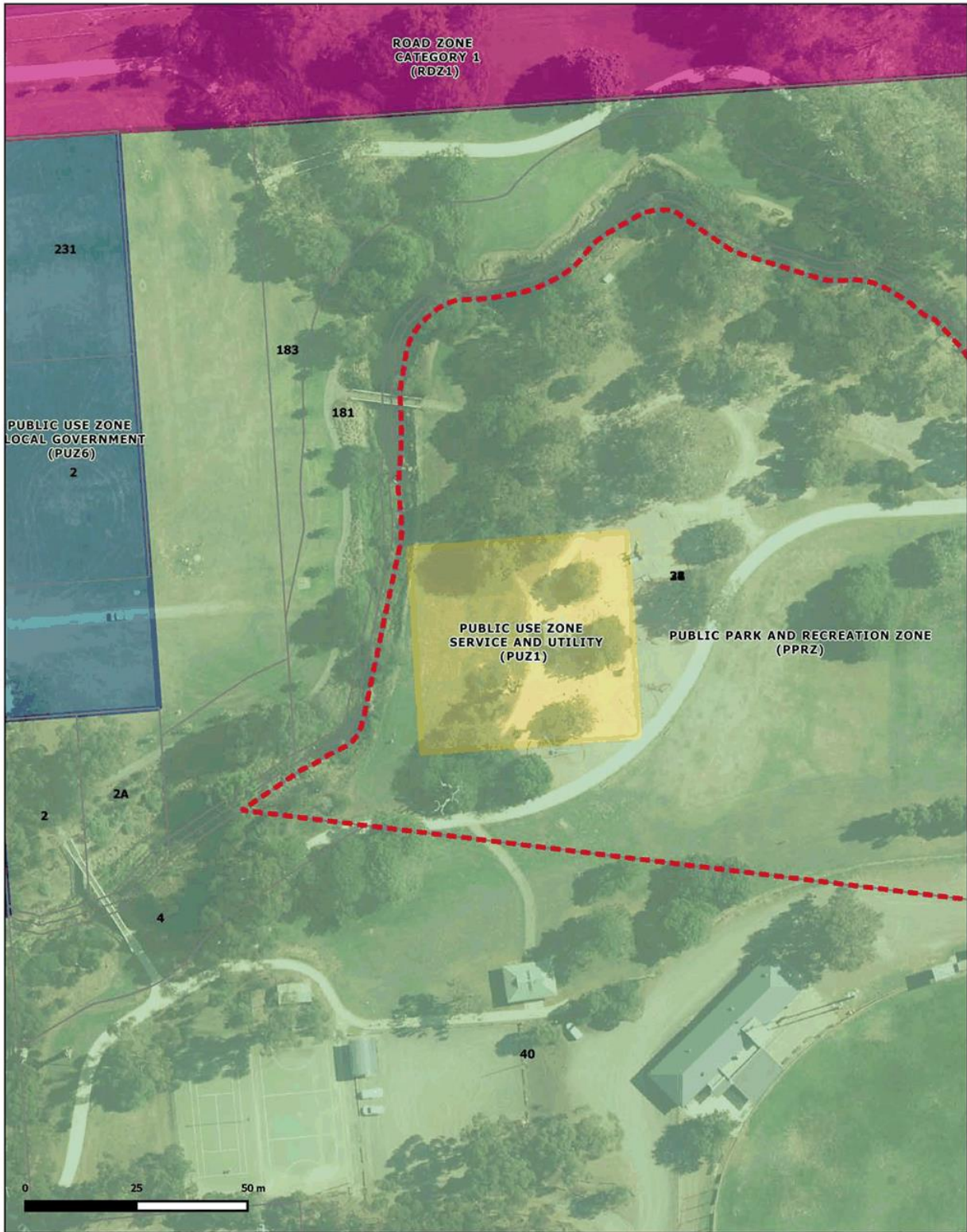
Data Source:
 Melton City Council. Contains Viomap information
 © The State of Victoria



Projection: GDA1994, MGA z55
 Scale 1:1500

**26-42 Richard Rd
 22A Reynolds Pl
 PROPOSED ZONING**

Map Produced 22/10/2018



Disclaimer & Use:
This publication may be of assistance to you but the State of Victoria, Melton City Council and its employees do not guarantee that the publication is without flaw of any kind or is wholly appropriate for your particular purpose and therefore disclaims all liability for any error, loss or other consequence which may arise from you relying on any information in the publication.

Data Source:
Melton City Council. Contains Viomap information
© The State of Victoria



Projection: GDA1994, MGA z55
Scale 1:1000

24-26 Reserve Rd

CURRENT ZONING

Map Produced 22/10/2018



Disclaimer & Use:
 This publication may be of assistance to you but the State of Victoria, Melton City Council and its employees do not guarantee that the publication is without flaw of any kind or is wholly appropriate for your particular purpose and therefore disclaims all liability for any error, loss or other consequence which may arise from you relying on any information in the publication.

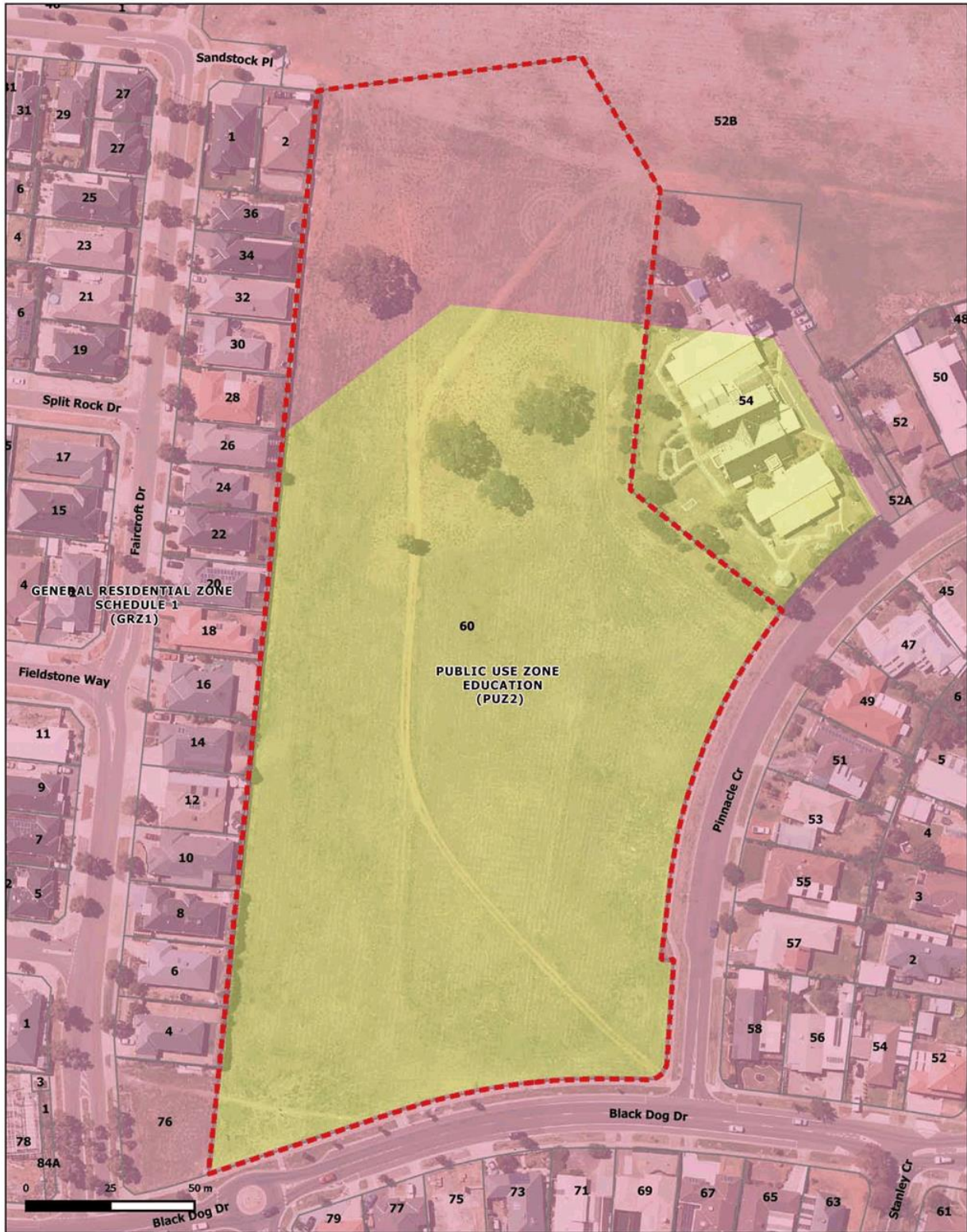
Data Source:
 Melton City Council. Contains Viomap information
 © The State of Victoria



24-26 Reserve Rd
PROPOSED ZONING

Projection: GDA1994, MGA z55
 Scale 1:1000

Map Produced 22/10/2018



Disclaimer & Use:
This publication may be of assistance to you but the State of Victoria, Melton City Council and its employees do not guarantee that the publication is without flaw of any kind or is wholly appropriate for your particular purpose and therefore disclaims all liability for any error, loss or other consequence which may arise from you relying on any information in the publication.

Data Source:
Melton City Council. Contains Viomap information
© The State of Victoria



Projection: GDA1994, MGA z55
Scale 1:1500

60 Black Dog Dr

CURRENT ZONING

Map Produced 22/10/2018



Disclaimer & Use:
 This publication may be of assistance to you but the State of Victoria, Melton City Council and its employees do not guarantee that the publication is without flaw of any kind or is wholly appropriate for your particular purpose and therefore disclaims all liability for any error, loss or other consequence which may arise from you relying on any information in the publication.

Data Source:
 Melton City Council. Contains Viomap information
 © The State of Victoria



Projection: GDA1994, MGA z55
 Scale 1:1500

60 Black Dog Dr
PROPOSED ZONING

Map Produced 22/10/2018



Disclaimer & Use:
 This publication may be of assistance to you but the State of Victoria, Melton City Council and its employees do not guarantee that the publication is without flaw of any kind or is wholly appropriate for your particular purpose and therefore disclaims all liability for any error, loss or other consequence which may arise from you relying on any information in the publication.

Data Source:
 Melton City Council. Contains Viomap information
 © The State of Victoria



Projection: GDA1994, MGA z55
 Scale 1:500

**21 Rockfern Cr
 94 Plumpton Rd**
CURRENT ZONING

Map Produced 22/10/2018



Disclaimer & Use:
 This publication may be of assistance to you but the State of Victoria, Melton City Council and its employees do not guarantee that the publication is without flaw of any kind or is wholly appropriate for your particular purpose and therefore disclaims all liability for any error, loss or other consequence which may arise from you relying on any information in the publication.

Data Source:
 Melton City Council. Contains Viomap information
 © The State of Victoria



Projection: GDA1994, MGA z55
 Scale 1:500

**21 Rockfern Cr
 94 Plumpton Rd**
PROPOSED ZONING

Map Produced 22/10/2018



Disclaimer & Use:
This publication may be of assistance to you but the State of Victoria, Melton City Council and its employees do not guarantee that the publication is without flaw of any kind or is wholly appropriate for your particular purpose and therefore disclaims all liability for any error, loss or other consequence which may arise from you relying on any information in the publication.

Data Source:
Melton City Council. Contains Viomap information
© The State of Victoria



Projection: GDA1994, MGA z55
Scale 1:6000

158-182 Burns Lane
184-204 Burns Lane
CURRENT ZONING

Map Produced 16/10/2018



Disclaimer & Use:
This publication may be of assistance to you but the State of Victoria, Melton City Council and its employees do not guarantee that the publication is without flaw of any kind or is wholly appropriate for your particular purpose and therefore disclaims all liability for any error, loss or other consequence which may arise from you relying on any information in the publication.

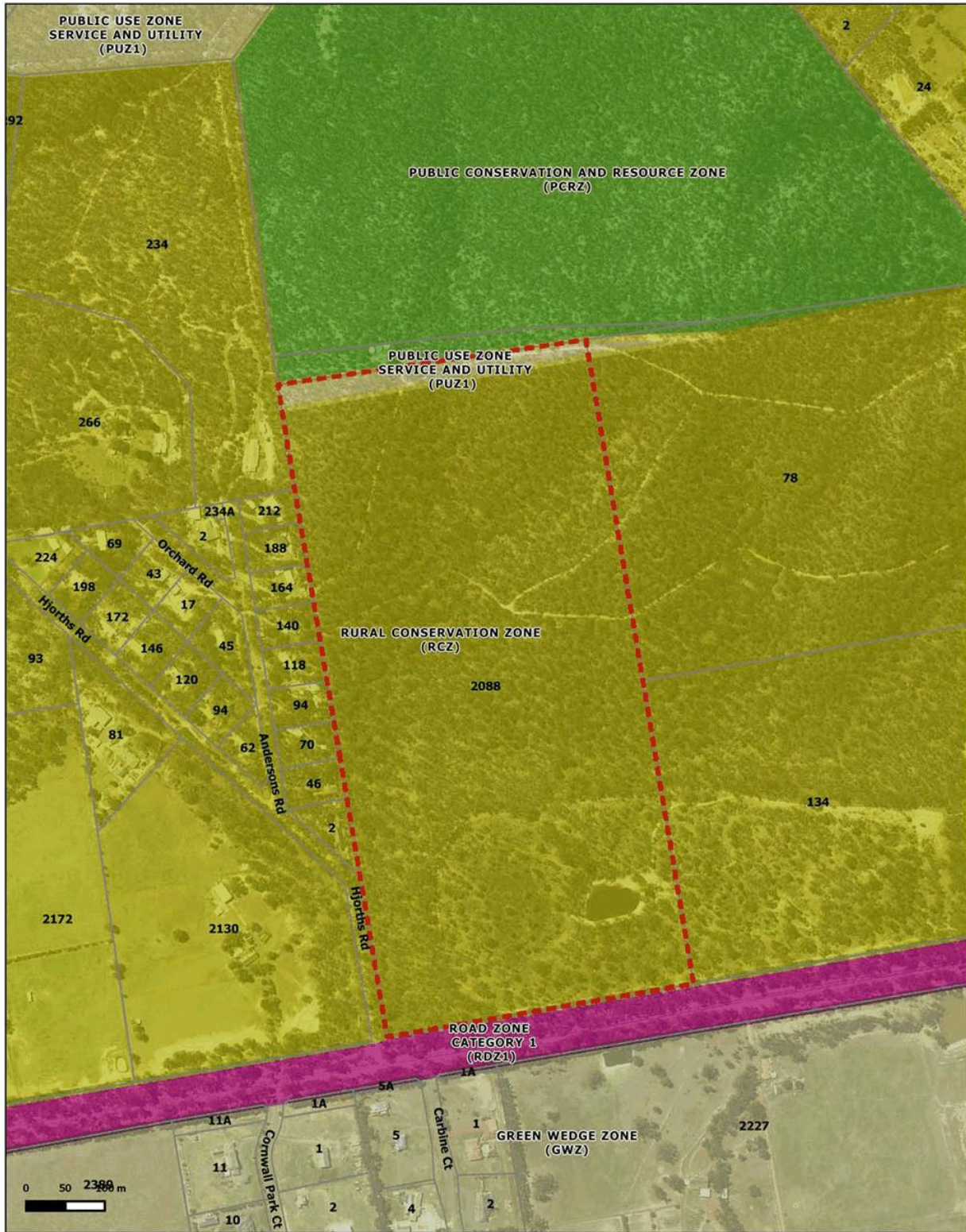
Data Source:
Melton City Council. Contains Viomap information
© The State of Victoria



Projection: GDA1994, MGA z55
Scale 1:6000

158-182 Burns Lane
184-204 Burns Lane
PROPOSED ZONING

Map Produced 16/10/2018



Disclaimer & Use:
 This publication may be of assistance to you but the State of Victoria, Melton City Council and its employees do not guarantee that the publication is without flaw of any kind or is wholly appropriate for your particular purpose and therefore disclaims all liability for any error, loss or other consequence which may arise from you relying on any information in the publication.

Data Source:
 Melton City Council. Contains Viomap information
 © The State of Victoria

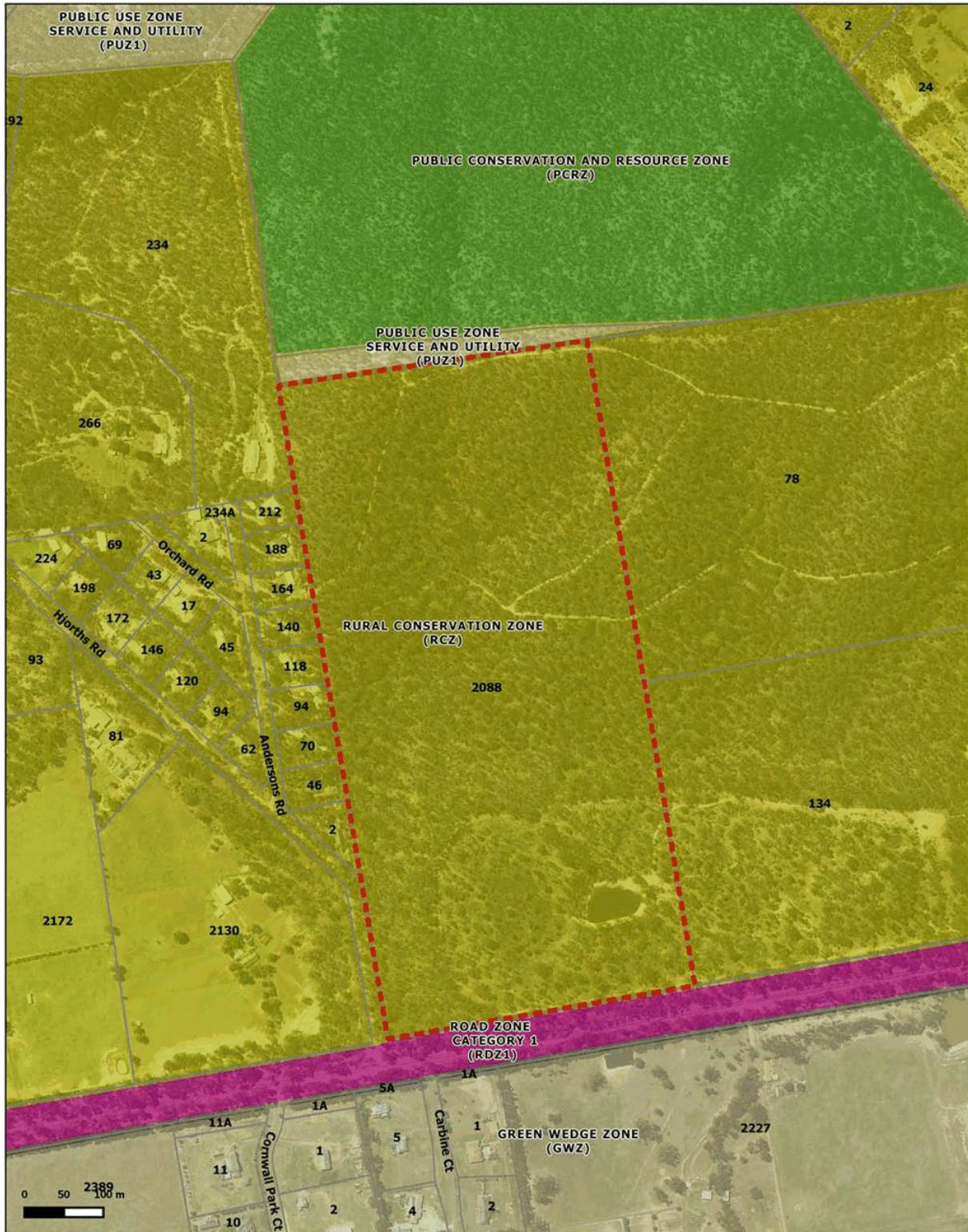


Projection: GDA1994, MGA z55
 Scale 1:6000

2088-2128 Diggers Rest-Coimadai Rd

CURRENT ZONING

Map Produced 17/10/2018



Disclaimer & Use:
 This publication may be of assistance to you but the State of Victoria, Melton City Council and its employees do not guarantee that the publication is without flaw of any kind or is wholly appropriate for your particular purpose and therefore disclaims all liability for any error, loss or other consequence which may arise from you relying on any information in the publication.

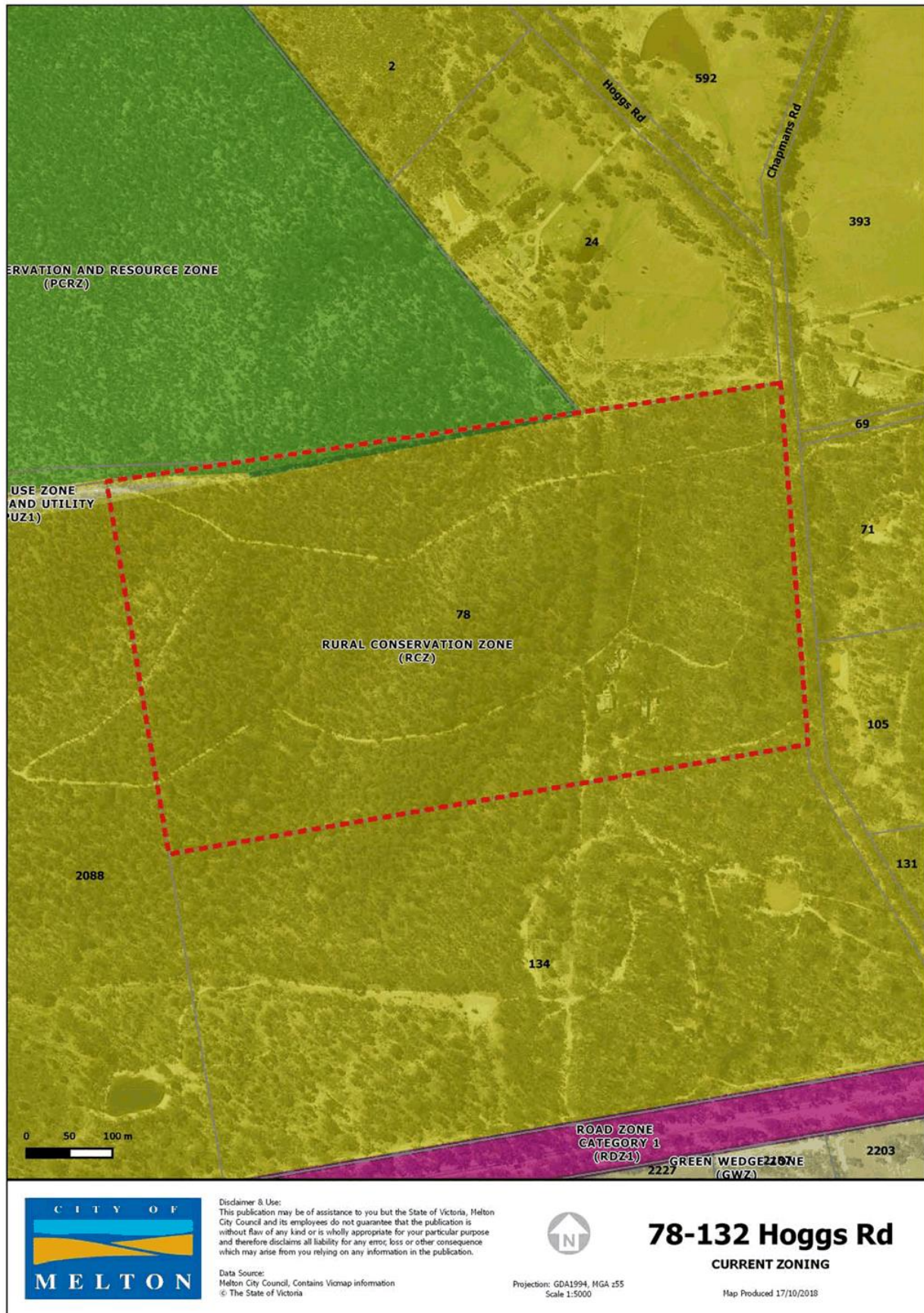
Data Source:
 Melton City Council. Contains Viomap information
 © The State of Victoria

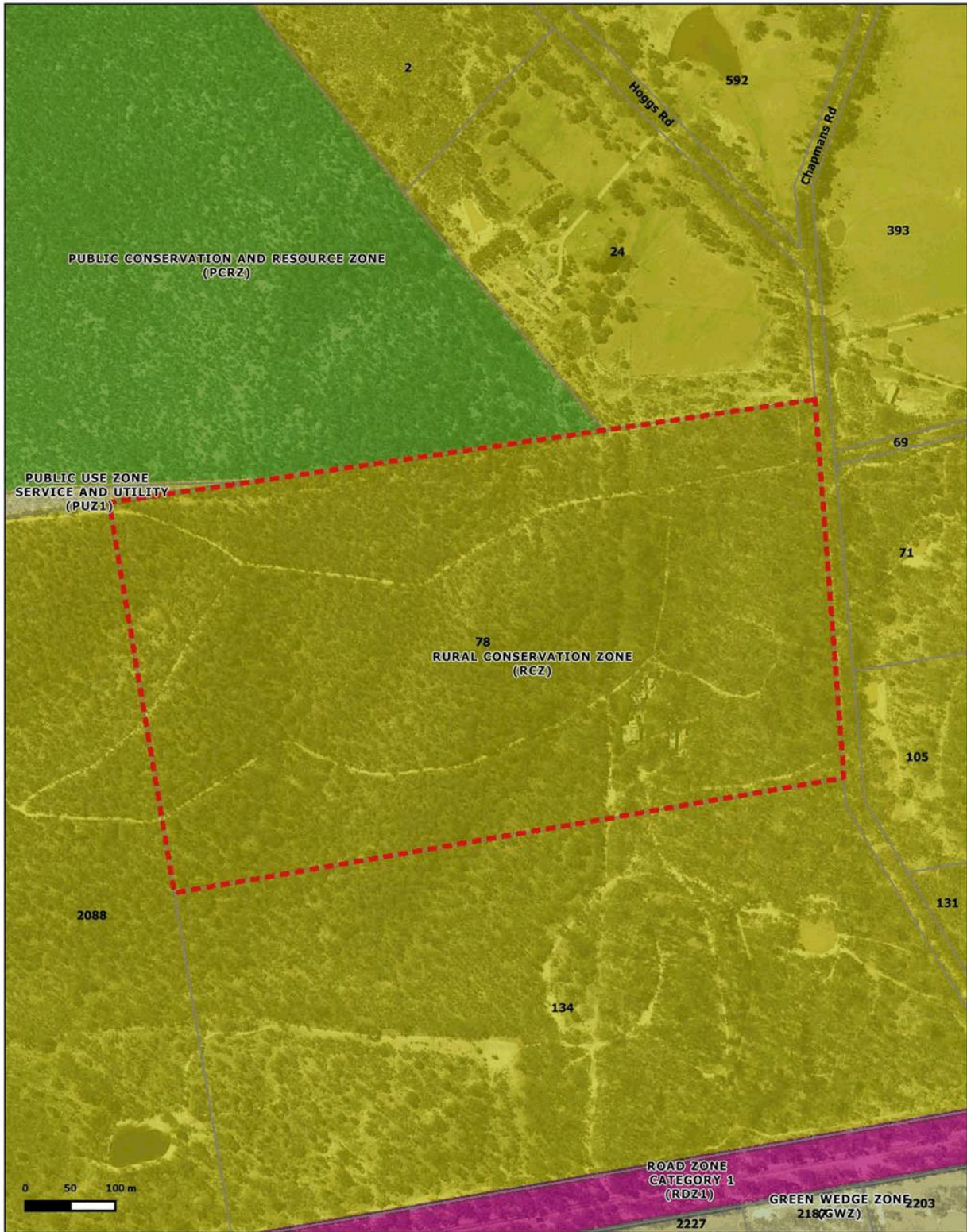


Projection: GDA1994, MGA z55
 Scale 1:6000

**2088-2128 Diggers
 Rest-Coimadai Rd
 PROPOSED ZONING**

Map Produced 17/10/2018





Disclaimer & Use:
 This publication may be of assistance to you but the State of Victoria, Melton City Council and its employees do not guarantee that the publication is without flaw of any kind or is wholly appropriate for your particular purpose and therefore disclaims all liability for any error, loss or other consequence which may arise from you relying on any information in the publication.

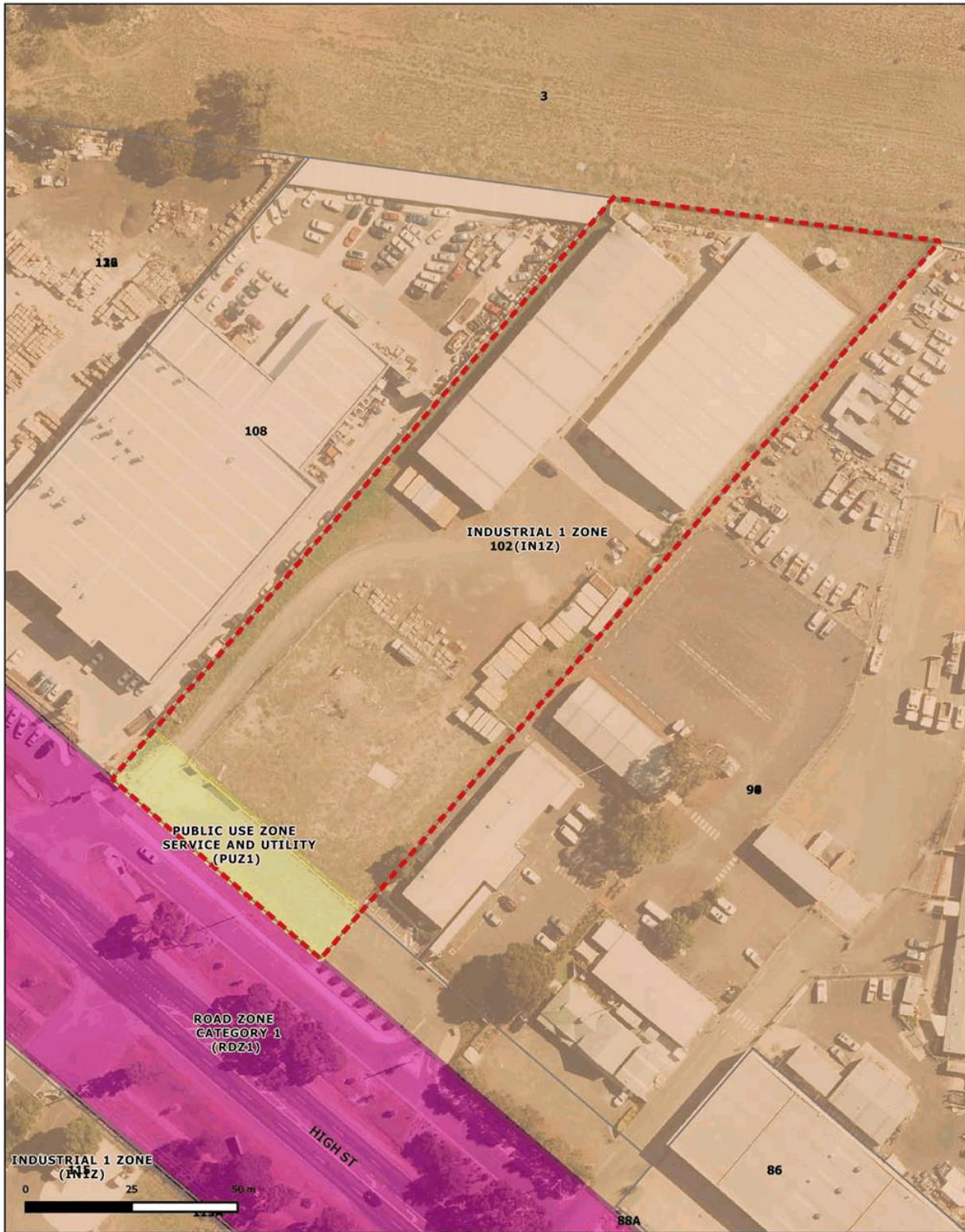
Data Source:
 Melton City Council. Contains Viomap information
 © The State of Victoria



78-132 Hoggs Rd
PROPOSED ZONING

Projection: GDA1994, MGA z55
 Scale 1:5000

Map Produced 17/10/2018



Disclaimer & Use:
 This publication may be of assistance to you but the State of Victoria, Melton City Council and its employees do not guarantee that the publication is without flaw of any kind or is wholly appropriate for your particular purpose and therefore disclaims all liability for any error, loss or other consequence which may arise from you relying on any information in the publication.

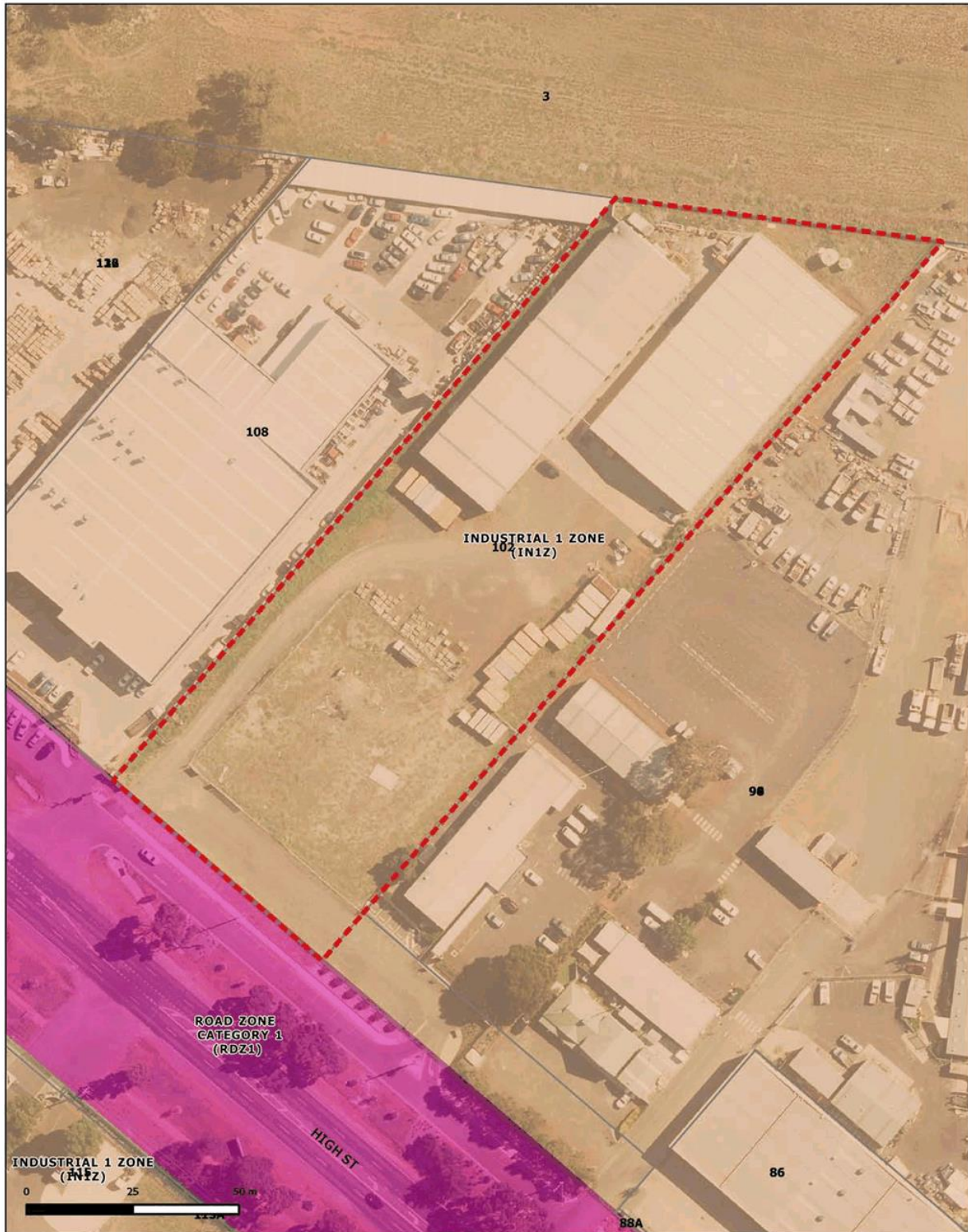
Data Source:
 Melton City Council. Contains Viomap information
 © The State of Victoria



Projection: GDA1994, MGA z55
 Scale 1:1100

102 High St
CURRENT ZONING

Map Produced 17/10/2018



Disclaimer & Use:
This publication may be of assistance to you but the State of Victoria, Melton City Council and its employees do not guarantee that the publication is without flaw of any kind or is wholly appropriate for your particular purpose and therefore disclaims all liability for any error, loss or other consequence which may arise from you relying on any information in the publication.

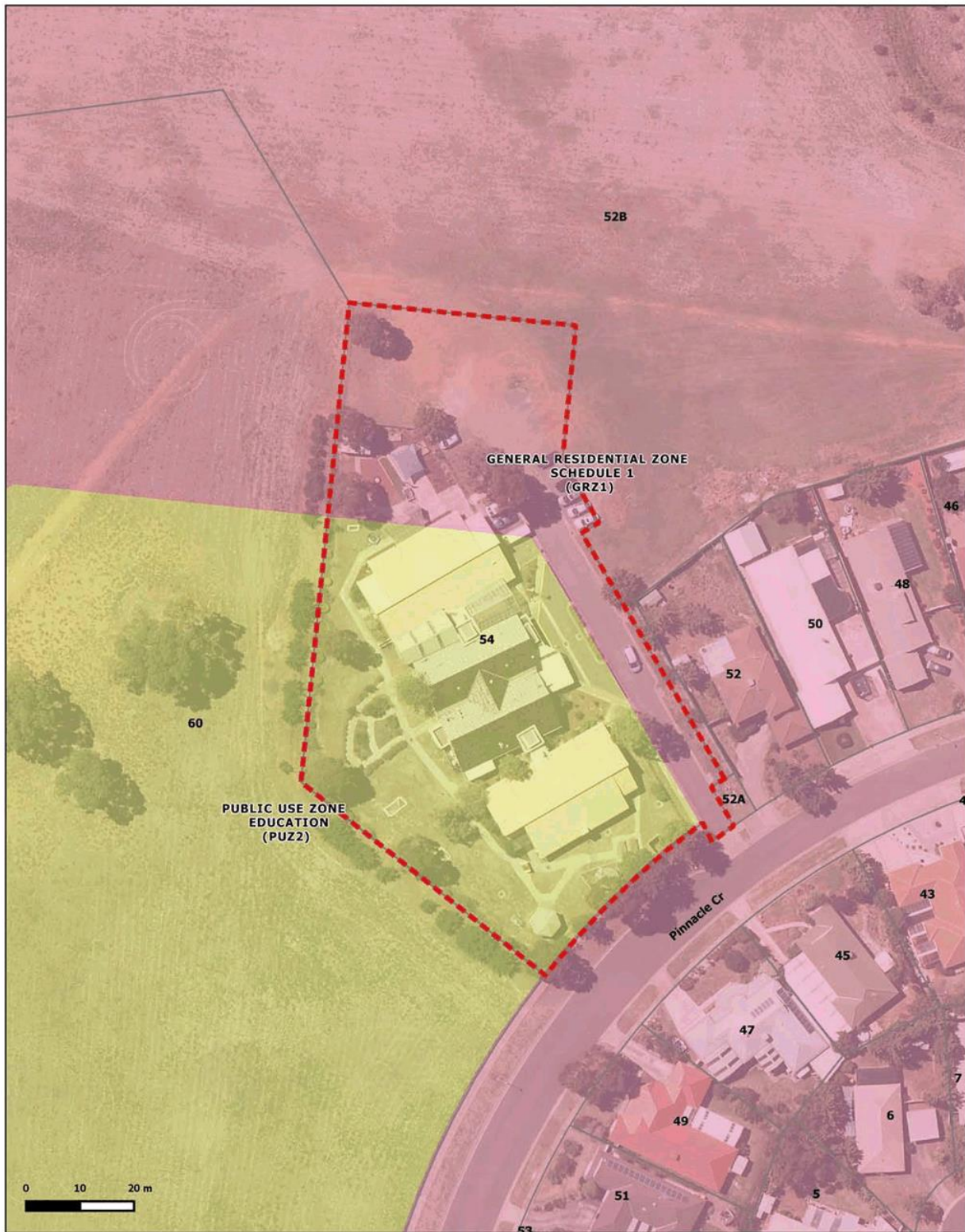
Data Source:
Melton City Council. Contains Viomap information
© The State of Victoria



Projection: GDA1994, MGA z55
Scale 1:1100

102 High St PROPOSED ZONING

Map Produced 17/10/2018



Disclaimer & Use:
This publication may be of assistance to you but the State of Victoria, Melton City Council and its employees do not guarantee that the publication is without flaw of any kind or is wholly appropriate for your particular purpose and therefore disclaims all liability for any error, loss or other consequence which may arise from you relying on any information in the publication.

Data Source:
Melton City Council. Contains Viomap information
© The State of Victoria

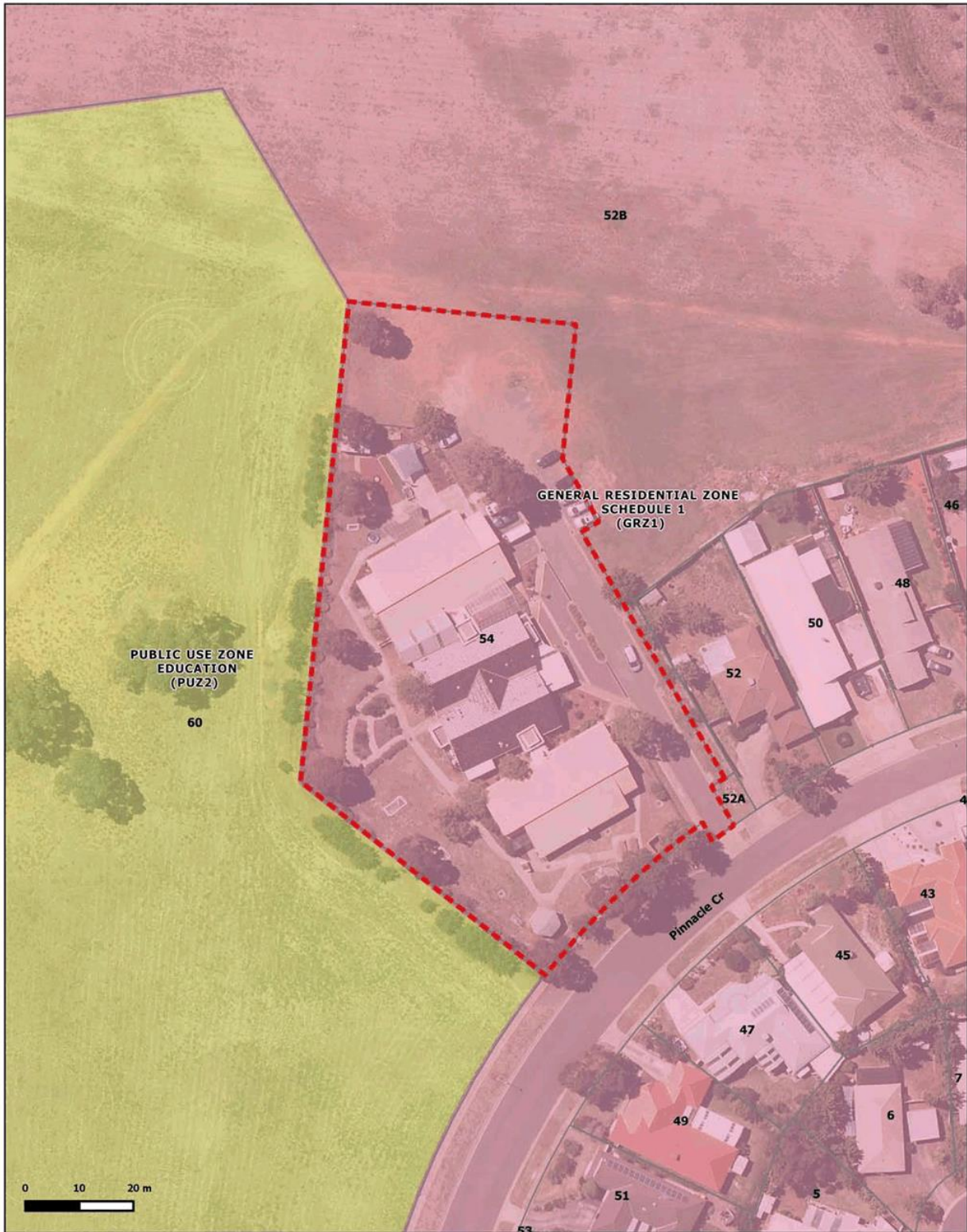


Projection: GDA1994, MGA z55
Scale 1:1000

54 Pinnacle Cr

CURRENT ZONING

Map Produced 22/10/2018



Disclaimer & Use:
This publication may be of assistance to you but the State of Victoria, Melton City Council and its employees do not guarantee that the publication is without flaw of any kind or is wholly appropriate for your particular purpose and therefore disclaims all liability for any error, loss or other consequence which may arise from you relying on any information in the publication.

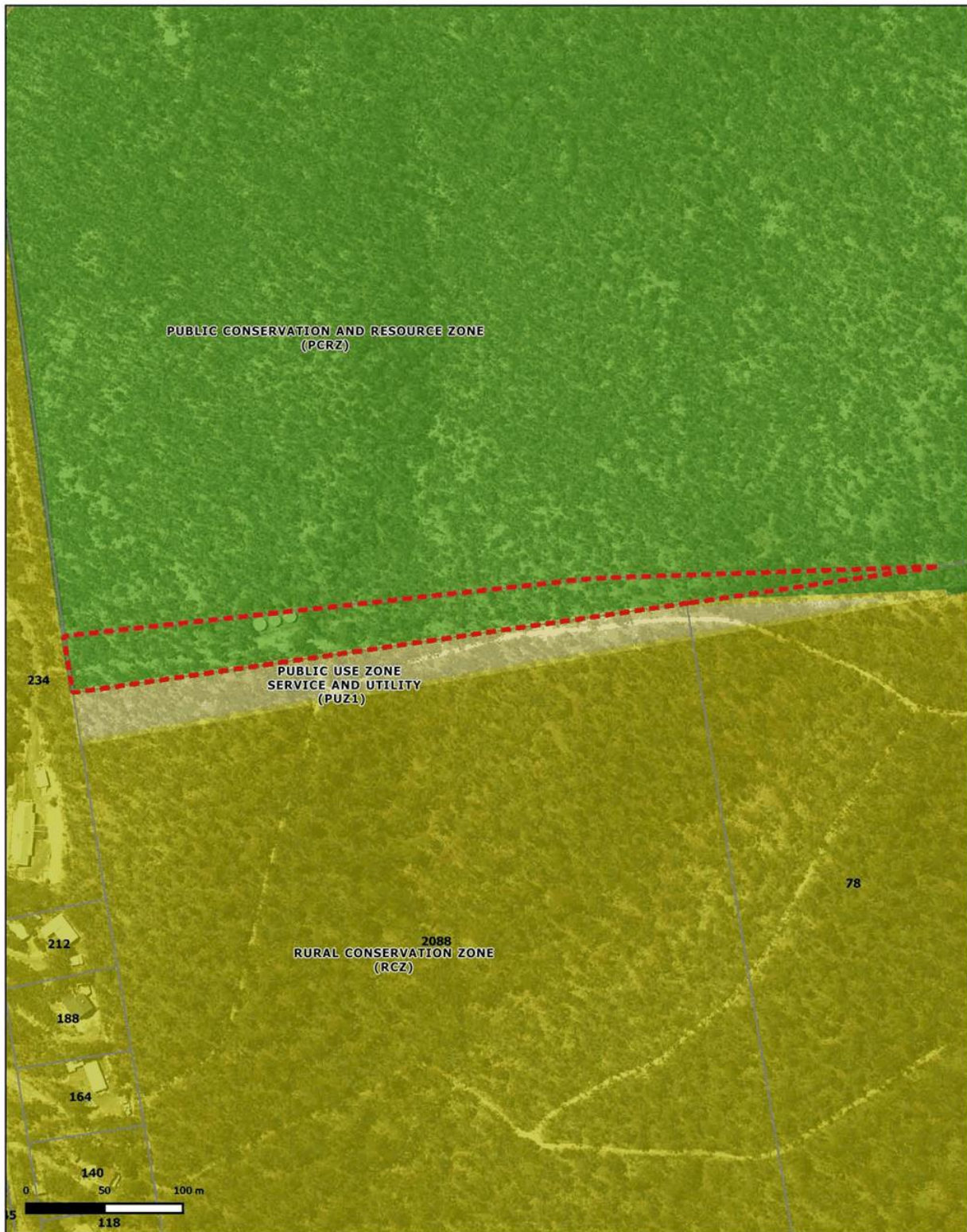
Data Source:
Melton City Council. Contains Viomap information
© The State of Victoria



Projection: GDA1994, MGA z55
Scale 1:1000

54 Pinnacle Cr PROPOSED ZONING

Map Produced 22/10/2018



Disclaimer & Use:
This publication may be of assistance to you but the State of Victoria, Melton City Council and its employees do not guarantee that the publication is without flaw of any kind or is wholly appropriate for your particular purpose and therefore disclaims all liability for any error, loss or other consequence which may arise from you relying on any information in the publication.

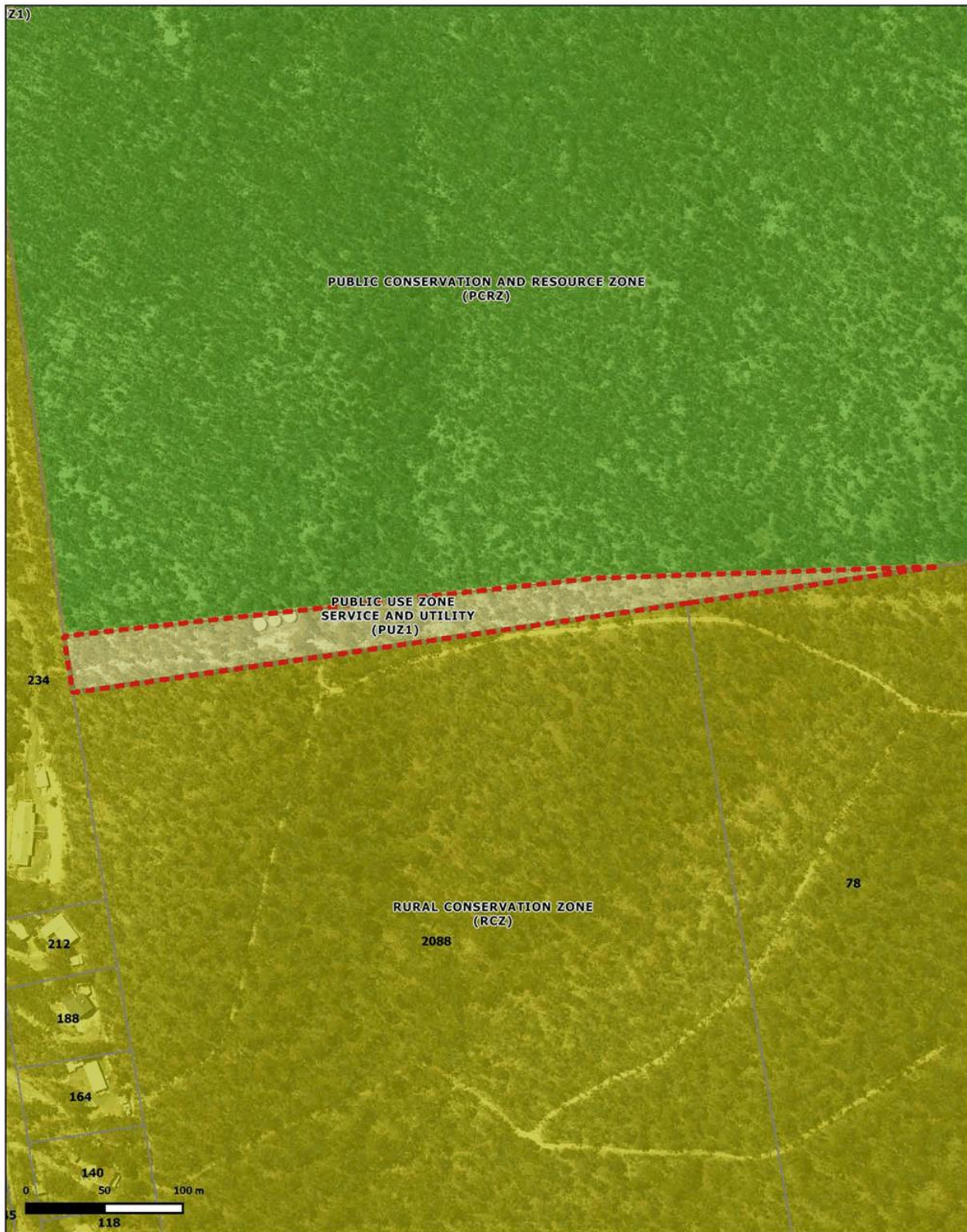
Data Source:
Melton City Council. Contains Viomap information
© The State of Victoria



Projection: GDA1994, MGA z55
Scale 1:3000

Crown Allotment 81D
Parish of Yangardook
CURRENT ZONING

Map Produced 17/10/2018



Disclaimer & Use:
This publication may be of assistance to you but the State of Victoria, Melton City Council and its employees do not guarantee that the publication is without flaw of any kind or is wholly appropriate for your particular purpose and therefore disclaims all liability for any error, loss or other consequence which may arise from you relying on any information in the publication.

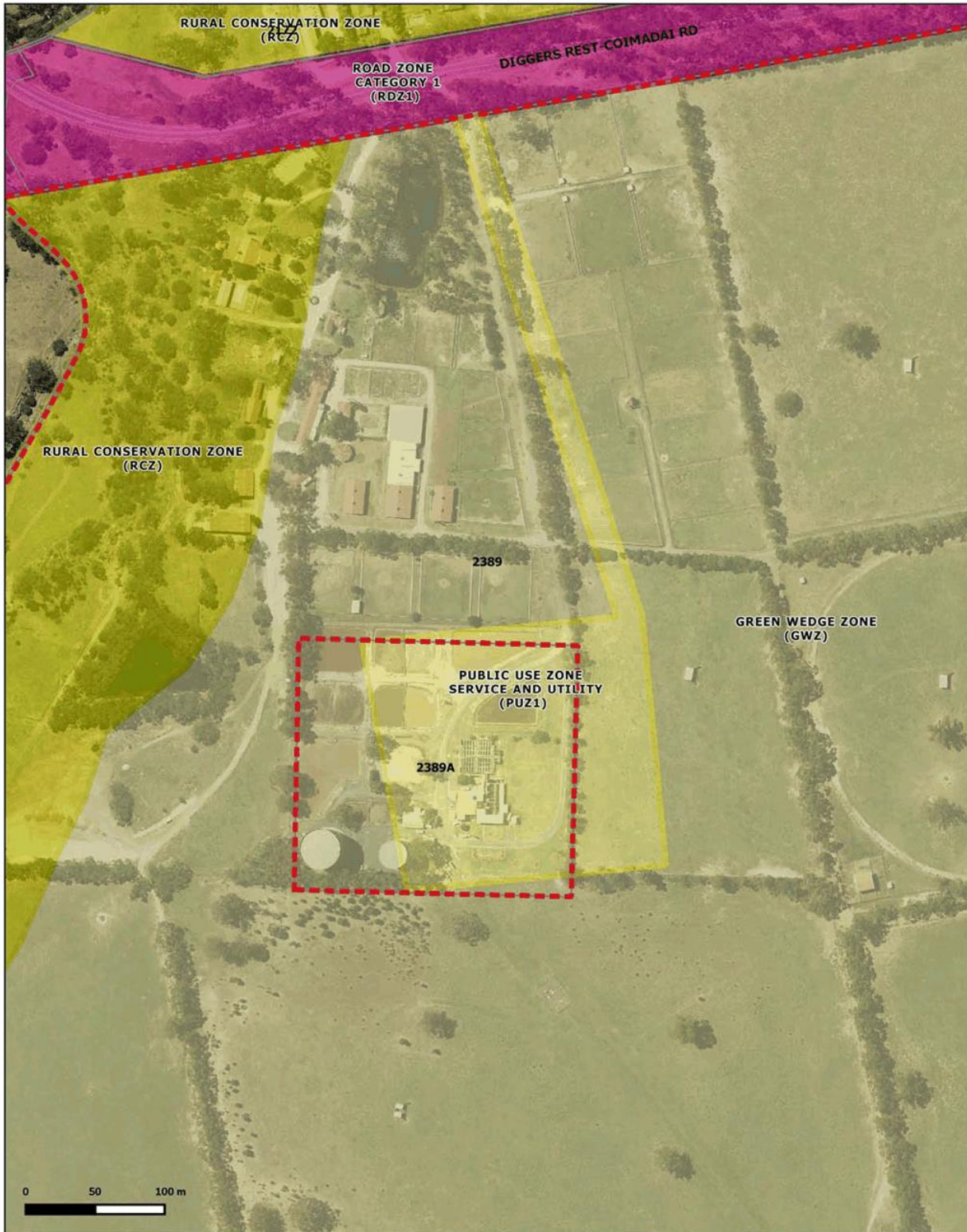
Data Source:
Melton City Council. Contains Viomap information
© The State of Victoria



Projection: GDA1994, MGA z55
Scale 1:3000

Crown Allotment 81D Parish of Yangardook PROPOSED ZONING

Map Produced 17/10/2018



Disclaimer & Use:
This publication may be of assistance to you but the State of Victoria, Melton City Council and its employees do not guarantee that the publication is without flaw of any kind or is wholly appropriate for your particular purpose and therefore disclaims all liability for any error, loss or other consequence which may arise from you relying on any information in the publication.

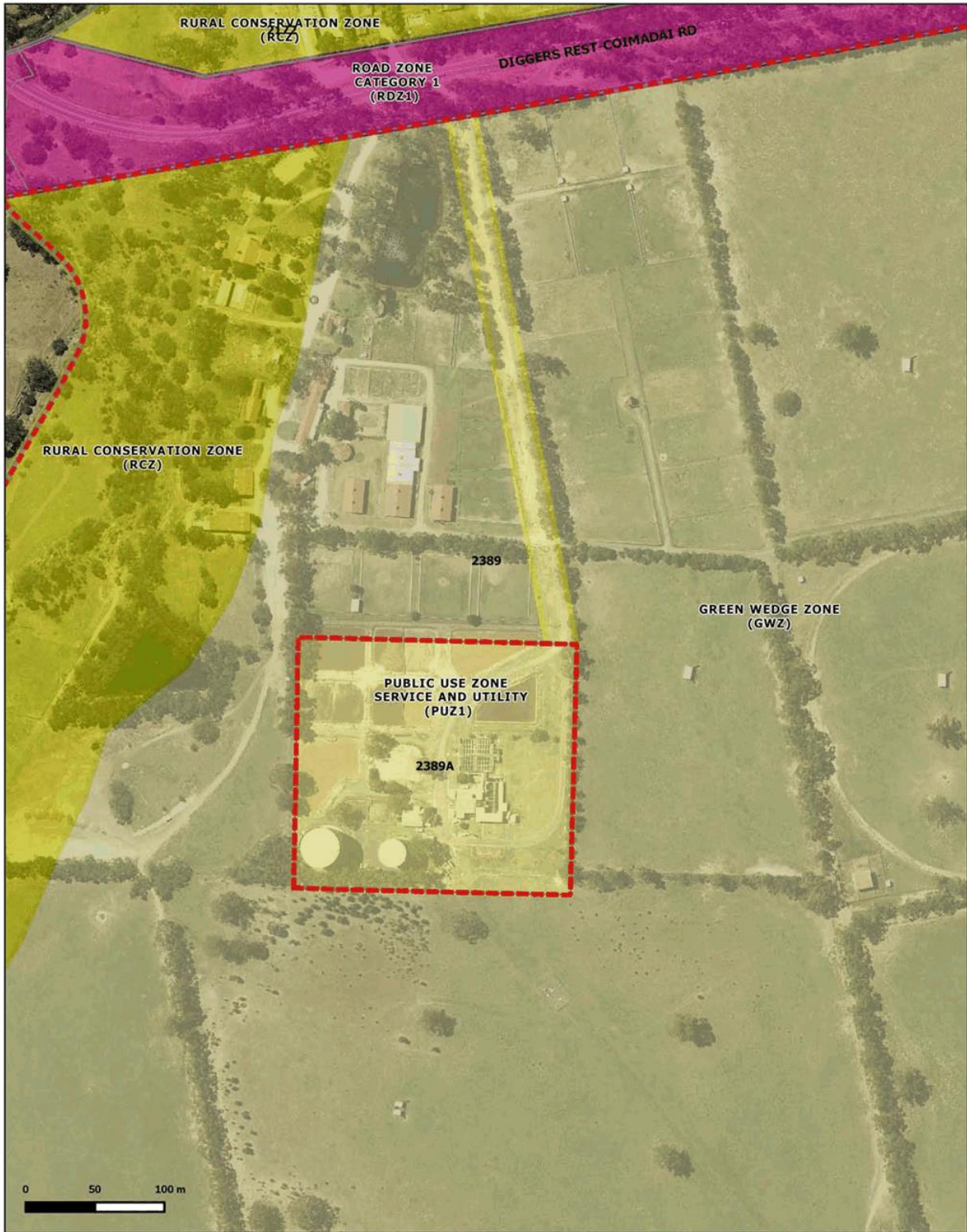
Data Source:
Melton City Council. Contains Viomap information
© The State of Victoria



2389 and 2389A Diggers Rest-Coimadai Rd CURRENT ZONING

Projection: GDA1994, MGA z55
Scale 1:3500

Map Produced 17/10/2018



Disclaimer & Use:
 This publication may be of assistance to you but the State of Victoria, Melton City Council and its employees do not guarantee that the publication is without flaw of any kind or is wholly appropriate for your particular purpose and therefore disclaims all liability for any error, loss or other consequence which may arise from you relying on any information in the publication.

Data Source:
 Melton City Council. Contains Viomap information
 © The State of Victoria



**2389 and 2389A
 Diggers Rest-Coimadai Rd
 PROPOSED ZONING**

Projection: GDA1994, MGA z55
 Scale 1:3500

Map Produced 17/10/2018



Disclaimer & Use:
This publication may be of assistance to you but the State of Victoria, Melton City Council and its employees do not guarantee that the publication is without flaw of any kind or is wholly appropriate for your particular purpose and therefore disclaims all liability for any error, loss or other consequence which may arise from you relying on any information in the publication.

Data Source:
Melton City Council. Contains Viomap information
© The State of Victoria



Projection: GDA1994, MGA z55
Scale 1:3000

1200-1220 Mt Cottrell Rd CURRENT OVERLAY STATUS

Map Produced 17/10/2018



Disclaimer & Use:
 This publication may be of assistance to you but the State of Victoria, Melton City Council and its employees do not guarantee that the publication is without flaw of any kind or is wholly appropriate for your particular purpose and therefore disclaims all liability for any error, loss or other consequence which may arise from you relying on any information in the publication.

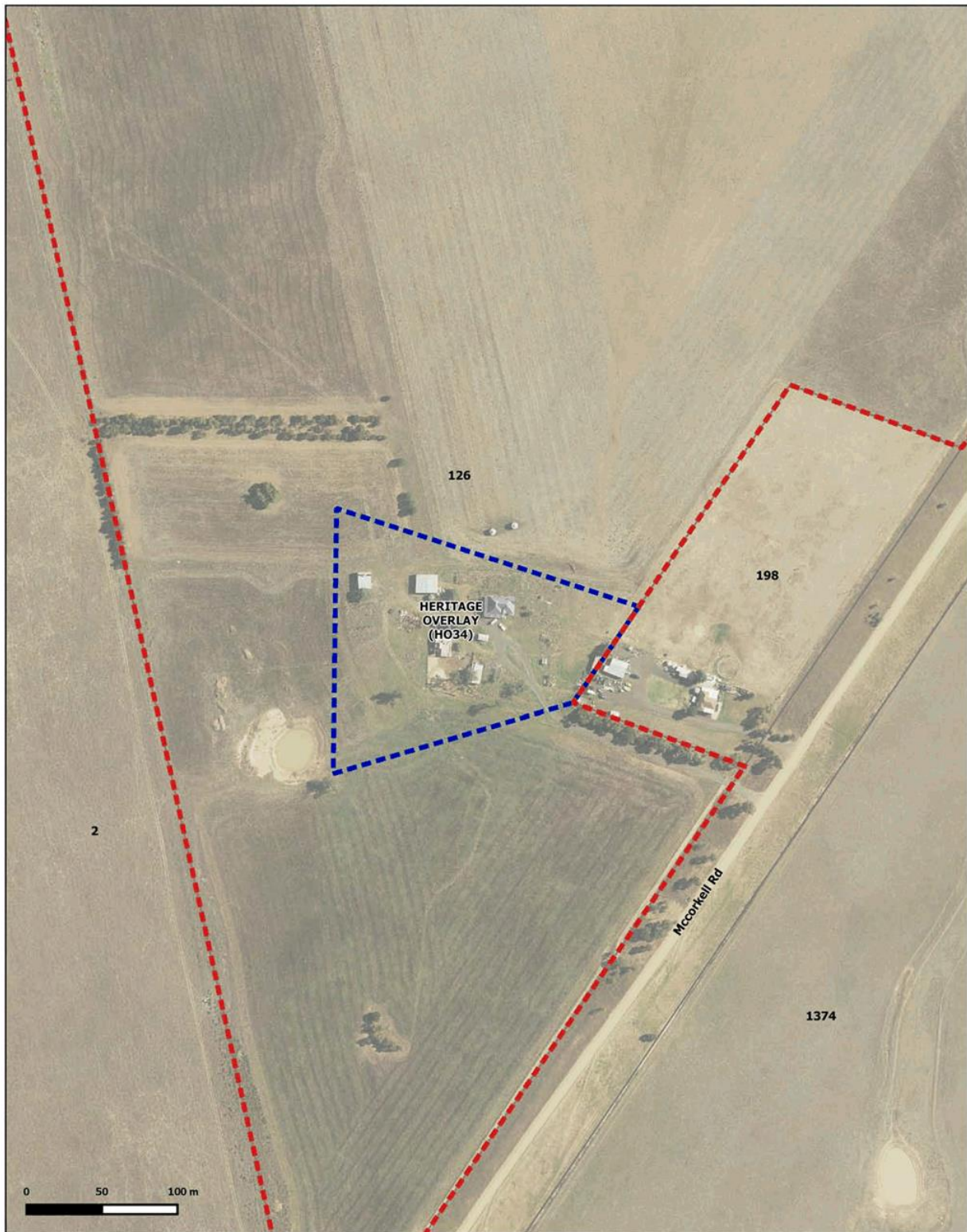
Data Source:
 Melton City Council. Contains Viomap information
 © The State of Victoria



Projection: GDA1994, MGA z55
 Scale 1:3000

**1200-1220
 Mt Cottrell Rd
 PROPOSED OVERLAY STATUS**

Map Produced 17/10/2018



Disclaimer & Use:
This publication may be of assistance to you but the State of Victoria, Melton City Council and its employees do not guarantee that the publication is without flaw of any kind or is wholly appropriate for your particular purpose and therefore disclaims all liability for any error, loss or other consequence which may arise from you relying on any information in the publication.

Data Source:
Melton City Council. Contains Viomap information
© The State of Victoria



126-196 McCorkells Rd

CURRENT OVERLAY STATUS

Projection: GDA1994, MGA z55
Scale 1:3000

Map Produced 17/10/2018



Disclaimer & Use:
This publication may be of assistance to you but the State of Victoria, Melton City Council and its employees do not guarantee that the publication is without flaw of any kind or is wholly appropriate for your particular purpose and therefore disclaims all liability for any error, loss or other consequence which may arise from you relying on any information in the publication.

Data Source:
Melton City Council. Contains Viomap information
© The State of Victoria



126-196 McCorkells Rd
PROPOSED OVERLAY STATUS

Projection: GDA1994, MGA z55
Scale 1:3000

Map Produced 17/10/2018