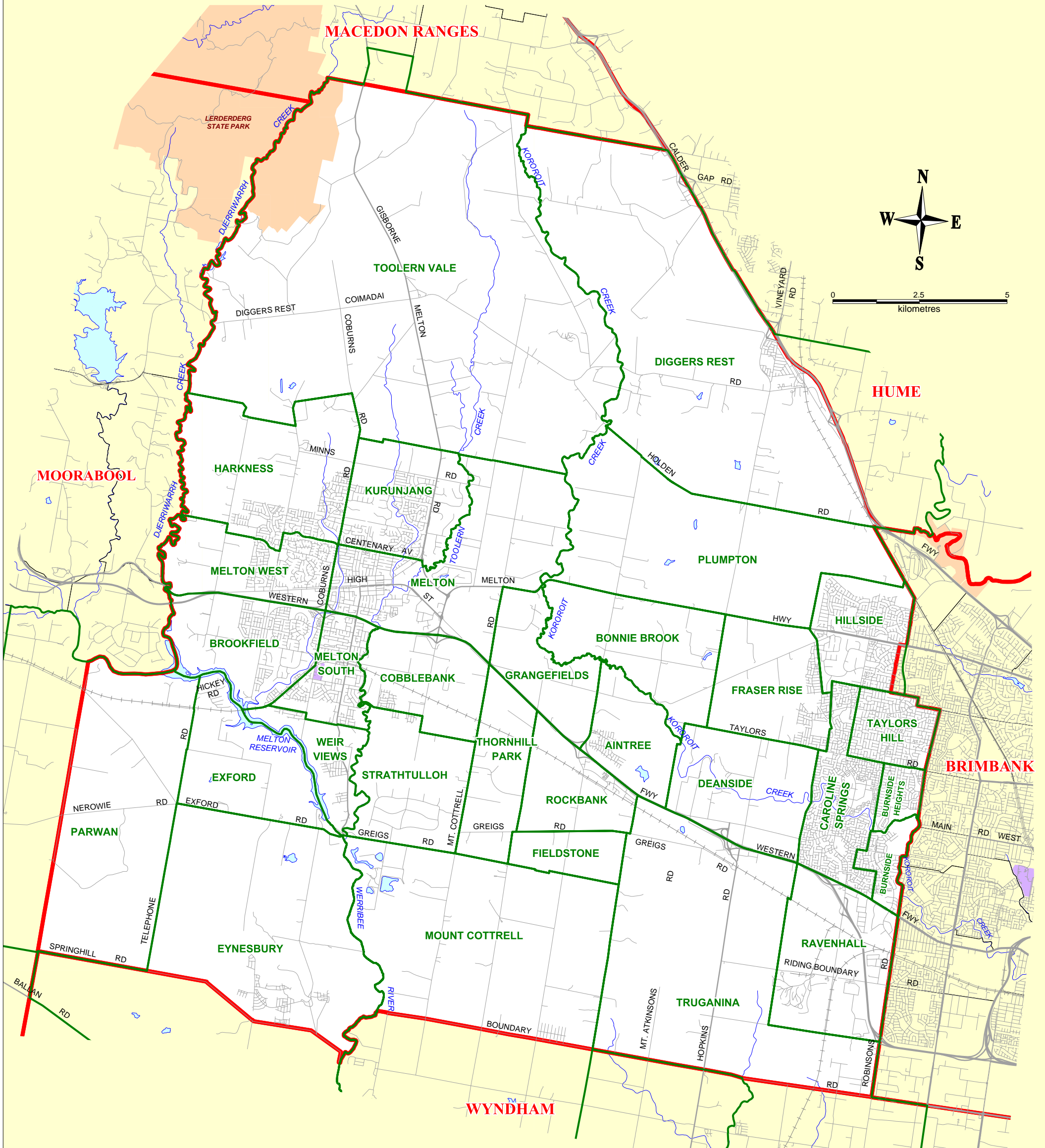


CITY OF MELTON

LOCALITY (SUBURB) NAMES AND BOUNDARIES



LEGEND

- PARWIN Locality (Suburb) Boundary
- HUME Local Government Boundary

Prepared by Vicmap Data Services,
Land Use Victoria, DELWP

Version 4.6
February, 2017

Locality boundaries are determined by the municipal council
and endorsed by the Office of Geographic Names.

Government Gazette:-
21 January 1999, page 92
29 April 1999, page 976
13 May 1999, page 1108
10 August 2000, page 2013
13 October 2005, page 2287
4 May 2006, page 856
6 September 2012, page 2017
9 February 2017, page 159