

**PROJECT INFORMATION**

Project: 3 X UNIT DEVELOPMENT  
 13 WORDON COURT,  
 KURUNJANG

Client: TANER KIBAR  
 Date: 26.09.16

Prepared by: [Signature]  
 Checked by: [Signature]

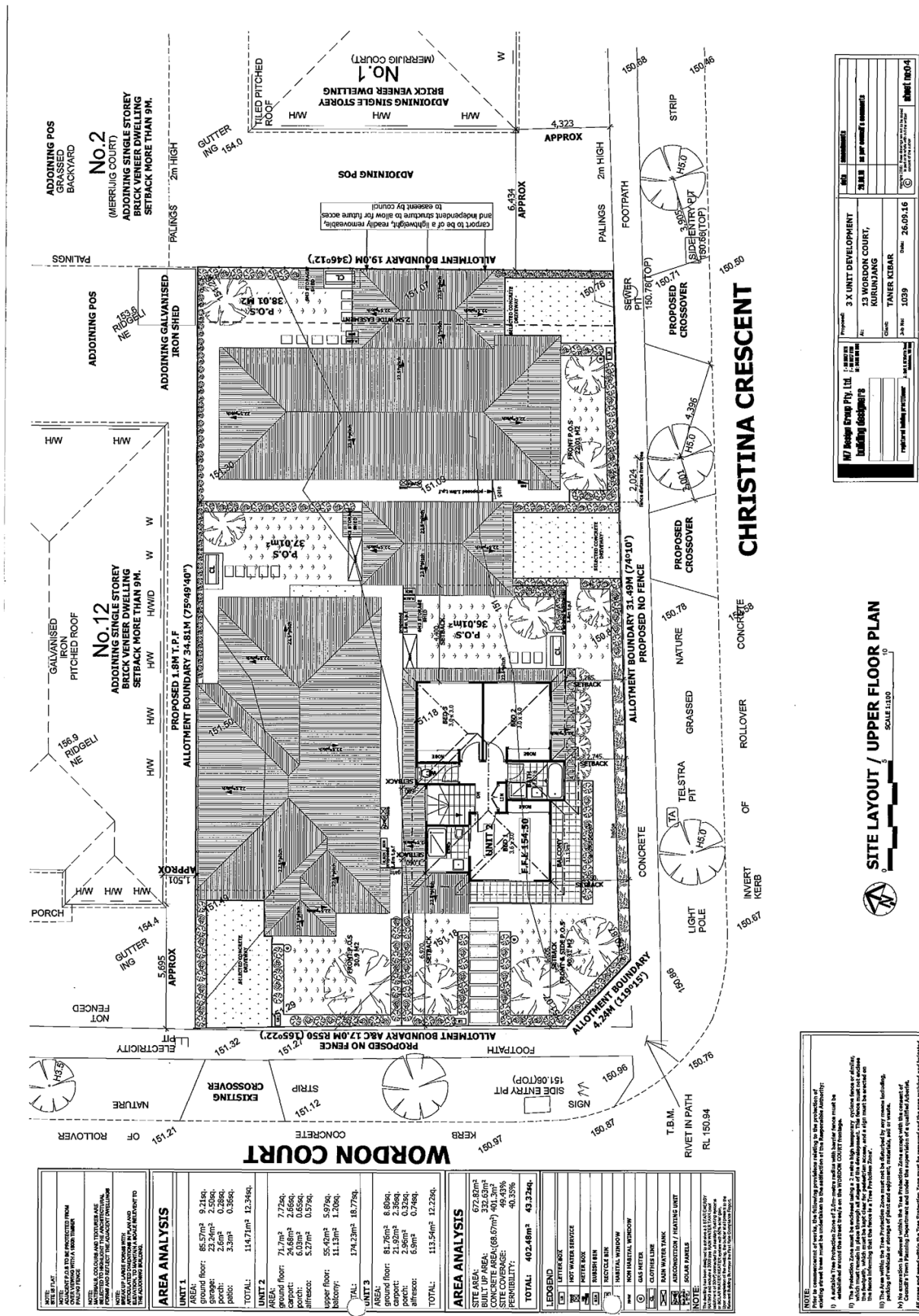
**CHRISTINA CRESCENT**

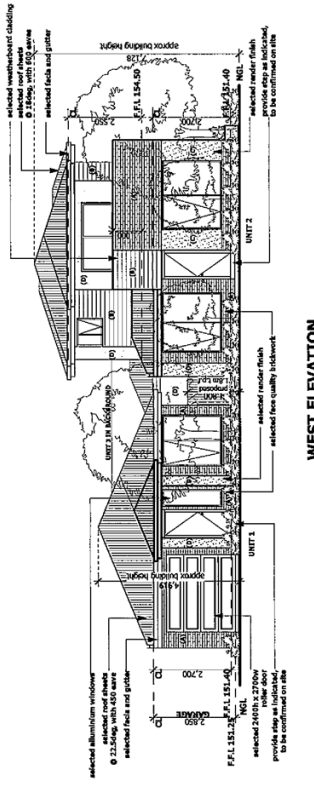
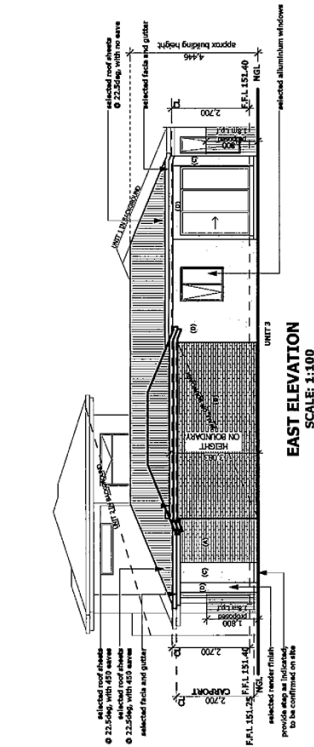
**SITE LAYOUT / GROUND FLOOR PLAN**

**NOTE:**

- 1) A suitable Tree Protection Zone of 2.0m radius shall be established for the trees shown on this plan. The trees shown on this plan are to be retained and protected. The trees shown on this plan are to be retained and protected. The trees shown on this plan are to be retained and protected.
- 2) The trees shown on this plan are to be retained and protected. The trees shown on this plan are to be retained and protected. The trees shown on this plan are to be retained and protected.
- 3) The trees shown on this plan are to be retained and protected. The trees shown on this plan are to be retained and protected. The trees shown on this plan are to be retained and protected.
- 4) The trees shown on this plan are to be retained and protected. The trees shown on this plan are to be retained and protected. The trees shown on this plan are to be retained and protected.

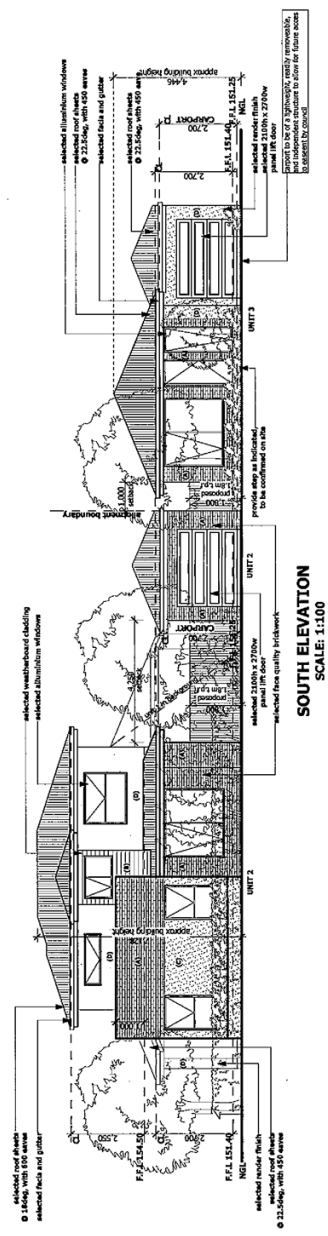
AREA ANALYSIS	
<b>UNIT 1</b>	
AREA:	85.57m <sup>2</sup> 9.21sq
garage:	2.27m <sup>2</sup> 0.25sq
porch:	3.30m <sup>2</sup> 0.36sq
TOTAL:	114.71m <sup>2</sup> 12.34sq
<b>UNIT 2</b>	
AREA:	71.70m <sup>2</sup> 7.72sq
garage:	24.68m <sup>2</sup> 2.66sq
porch:	6.03m <sup>2</sup> 0.65sq
terrace:	5.27m <sup>2</sup> 0.57sq
upper floor:	55.42m <sup>2</sup> 5.97sq
lower floor:	11.13m <sup>2</sup> 1.20sq
TOTAL:	174.23m <sup>2</sup> 18.72sq
<b>UNIT 3</b>	
AREA:	81.76m <sup>2</sup> 8.80sq
garage:	21.92m <sup>2</sup> 2.36sq
porch:	2.96m <sup>2</sup> 0.32sq
terrace:	6.81m <sup>2</sup> 0.74sq
TOTAL:	113.54m <sup>2</sup> 12.22sq
<b>AREA ANALYSIS</b>	
SITE AREA:	677.00m <sup>2</sup> 72.67sq
BUILT UP AREA:	332.63m <sup>2</sup> 35.71sq
CONCRETE AREA (88.67m <sup>2</sup> ):	401.3m <sup>2</sup> 43.00sq
SITE COVERAGE:	48.43%
PERMEABILITY:	40.35%
TOTAL:	402.48m <sup>2</sup> 43.22sq





WEST ELEVATION  
SCALE: 1:100

EAST ELEVATION  
SCALE: 1:100



SOUTH ELEVATION  
SCALE: 1:100

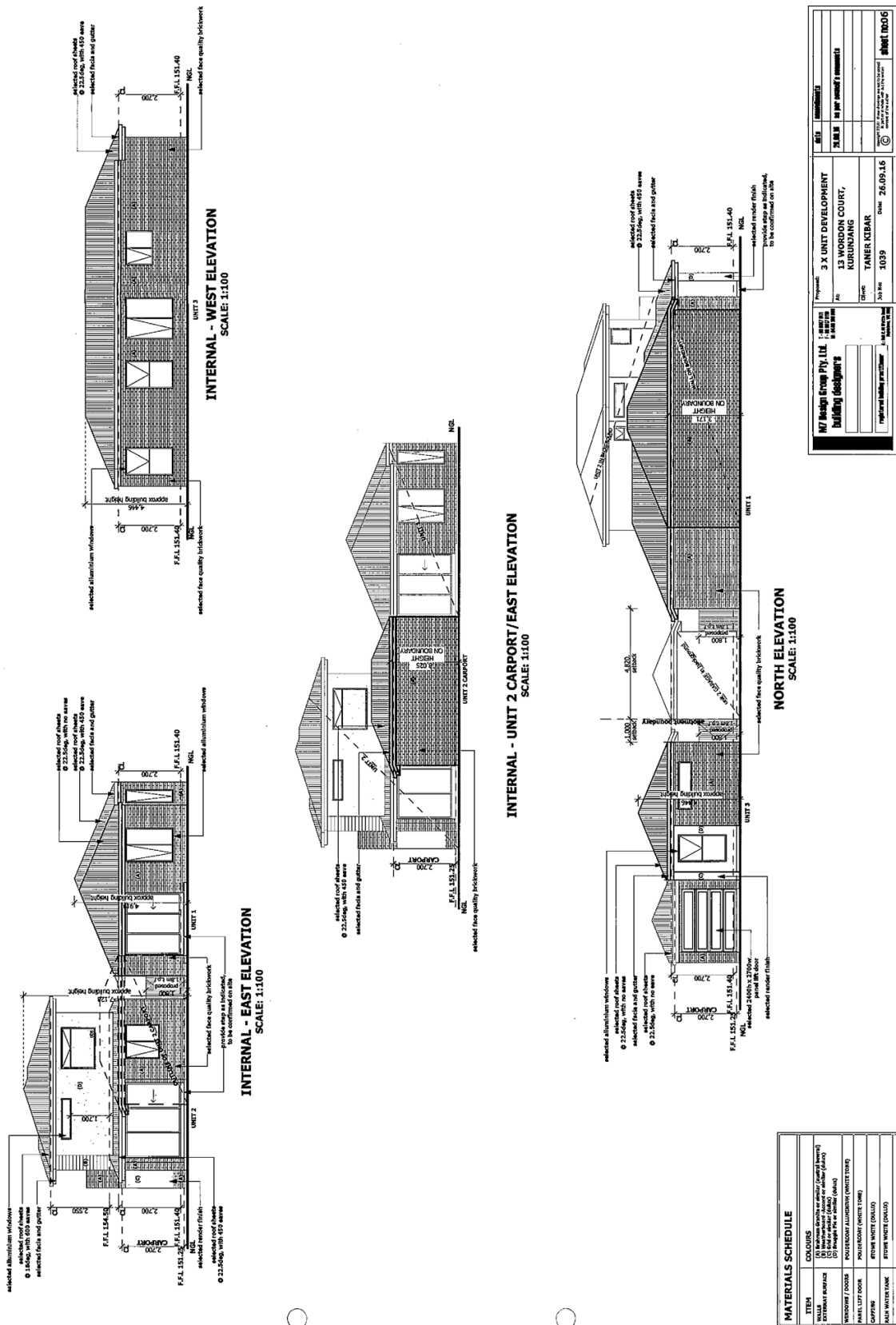
MATERIALS SCHEDULE	
ITEM	COLORS
WATER	WHITE
WATER TANK	WHITE
WINDOWS / DOORS	POSSACOM ALUMINIUM (WHITE TONE)
PANEL LIFT DOOR	POSSACOM ALUMINIUM (WHITE TONE)
CAPPIER	STONE WHITE (ORALD)
RAIN WATER TANK	STONE WHITE (ORALD)
CONCRETE DOWNWAY	DARK GREY TONE

**M7 Design Group Pty. Ltd.**  
Architects & Building Designers  
Professional Building Practitioner

Project: 3 X UNIT DEVELOPMENT  
13 WORDON COURT,  
KURUNJANG

Client: TANER KIBAR  
Date: 26.09.16

© M7 Design Group Pty. Ltd. 2016  
All Rights Reserved



<b>N7 Design Group Pty. Ltd.</b> Building Designers		Project: <b>3 X UNIT DEVELOPMENT</b> 13 WORDON COURT, KURUNJANG	Date: <b>26.09.16</b>
Author: <b>TAHER KIBAR</b>	Client: <b>TAMER KIBAR</b>	Job No: <b>1039</b>	Scale: <b>AS PER DRAWING</b>
Drawn: <b>TAHER KIBAR</b>	Checked: <b>TAHER KIBAR</b>	Approved: <b>TAHER KIBAR</b>	Sheet: <b>TRD/16</b>
<small>© Copyright 2016 N7 Design Group Pty. Ltd. All Rights Reserved. No part of this drawing may be reproduced, stored in a retrieval system or transmitted in any form or by any means, electronic, mechanical, photocopying, recording, or otherwise, without the prior written permission of N7 Design Group Pty. Ltd.</small>			