









AREAS RESIDENTIAL

UNIT 2.01	91 SQM	BALCONY	14 SQM
UNIT 2.02	91 SQM	BALCONY	14 SQM
UNIT 2.03	91 SQM	BALCONY	14 SQM
UNIT 2.04	91 SQM	BALCONY	14 SQM
UNIT 2.05	91 SQM	BALCONY	14 SQM
UNIT 2.06	91 SQM	BALCONY	14 SQM
UNIT 2.07	91 SQM	BALCONY	14 SQM
UNIT 2.08	91 SQM	BALCONY	14 SQM
UNIT 2.09	91 SQM	BALCONY	14 SQM
UNIT 2.10	91 SQM	BALCONY	14 SQM
UNIT 2.11	91 SQM	BALCONY	14 SQM
UNIT 2.12	91 SQM	BALCONY	14 SQM
UNIT 2.13	91 SQM	BALCONY	14 SQM
UNIT 2.14	91 SQM	BALCONY	14 SQM
UNIT 2.15	91 SQM	BALCONY	14 SQM
UNIT 2.16	91 SQM	BALCONY	14 SQM
UNIT 2.17	91 SQM	BALCONY	14 SQM
UNIT 2.18	91 SQM	BALCONY	14 SQM
UNIT 2.19	91 SQM	BALCONY	14 SQM
UNIT 2.20	91 SQM	BALCONY	14 SQM
UNIT 2.21	91 SQM	BALCONY	14 SQM
UNIT 2.22	91 SQM	BALCONY	14 SQM
UNIT 2.23	91 SQM	BALCONY	14 SQM
TOTAL	2202 SQM		409 SQM

TOTAL 2 BEDROOM  
11 APARTMENTS

TOTAL 3 BEDROOM  
74 APARTMENTS

SECOND FLOOR PLAN

Scale: 1:200  
Date: MAR 2017  
Drawn: [Name]  
Checked: [Name]

PROJECT: PROPOSED APARTMENT/COMMERCIAL  
CAROLINE SPRINGS BOULEVARD  
CAROLINE SPRINGS

TP06C

© Copyright [Name] 2017. All rights reserved. No part of this document may be reproduced without written permission.



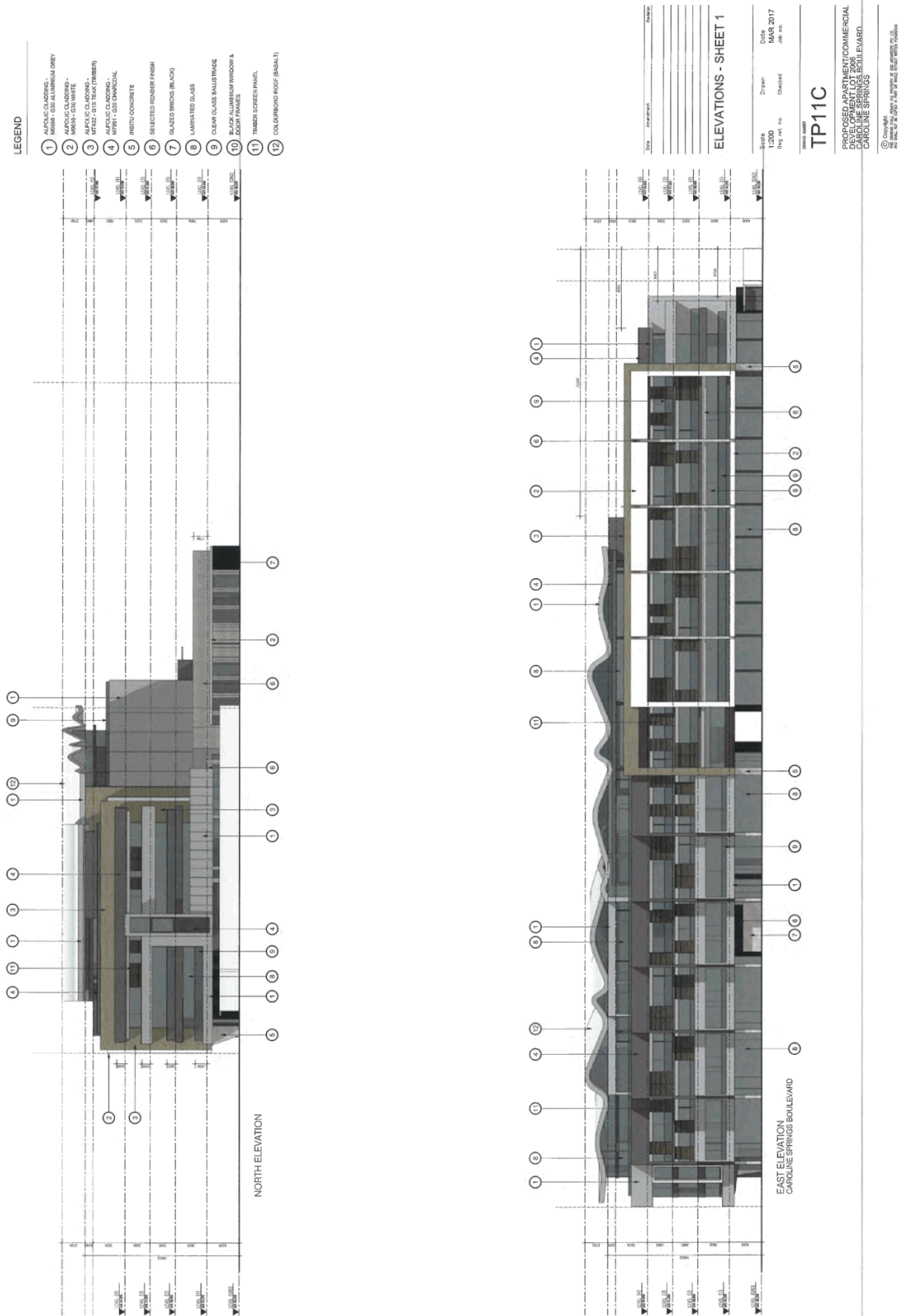
AREAS		RESIDENTIAL	
UNIT 3.01	91 SQM BALCONY	14 SQM	
UNIT 3.02	91 SQM BALCONY	14 SQM	
UNIT 3.03	91 SQM BALCONY	14 SQM	
UNIT 3.04	91 SQM BALCONY	14 SQM	
UNIT 3.05	91 SQM BALCONY	14 SQM	
UNIT 3.06	91 SQM BALCONY	14 SQM	
UNIT 3.07	91 SQM BALCONY	14 SQM	
UNIT 3.08	91 SQM BALCONY	14 SQM	
UNIT 3.09	91 SQM BALCONY	14 SQM	
UNIT 3.10	91 SQM BALCONY	14 SQM	
UNIT 3.11	91 SQM BALCONY	14 SQM	
UNIT 3.12	91 SQM BALCONY	14 SQM	
UNIT 3.13	91 SQM BALCONY	14 SQM	
UNIT 3.14	91 SQM BALCONY	14 SQM	
UNIT 3.15	91 SQM BALCONY	14 SQM	
UNIT 3.16	91 SQM BALCONY	14 SQM	
UNIT 3.17	91 SQM BALCONY	14 SQM	
UNIT 3.18	91 SQM BALCONY	14 SQM	
UNIT 3.19	91 SQM BALCONY	14 SQM	
UNIT 3.20	91 SQM BALCONY	14 SQM	
UNIT 3.21	91 SQM BALCONY	14 SQM	
UNIT 3.22	91 SQM BALCONY	14 SQM	
UNIT 3.23	91 SQM BALCONY	14 SQM	
TOTAL	2502 SQM	498 SQM	

TOTAL 2 BEDROOM	65 APARTMENTS
TOTAL 3 BEDROOM	11 APARTMENTS
TOTAL APARTMENTS	74 APARTMENTS











**LEGEND**

- 1 MUPKIC CLADDING - ANODISED ALUMINIUM GREY
- 2 MUPKIC CLADDING - WHITE - GLOSS WHITE
- 3 MUPKIC CLADDING - MUPKIC CLADDING (TIMBER)
- 4 MUPKIC CLADDING - MUPKIC CLADDING (CHARCOAL)
- 5 INSTYL CONCRETE
- 6 SELECTED RENDER FINISH
- 7 GLAZED BRICKS (BLACK)
- 8 LAMINATED GLASS
- 9 CLEAR GLASS BALUSTRADE
- 10 BLACK ALUMINIUM WINDOW & DOOR FINISH
- 11 TIMBER ROSEBIRN PANEL
- 12 COLOURED ROOF (BASALT)

**ELEVATIONS - SHEET 1**

Scale: N.T.S.  
 Drawn: Dmg inf. inc.  
 Date: MAR 2017  
 Checked: Job no.

**TP13C**

PROPOSED APARTMENT/COMMERCIAL  
 CAROLINE SPRINGS BOULEVARD  
 CAROLINE SPRINGS

© Copyright  
 All Rights Reserved  
 All other marks are the property of their owners. No. 13

The drawing shows a side elevation of a five-storey building. The ground floor is a commercial space with large glass windows and a dark frame. The upper floors are residential, featuring balconies with dark glass balustrades. The facade is composed of various materials as defined in the legend, including mupkic cladding in grey, white, and charcoal, timber panels, and glazed bricks. The roof is a dark, colored roof. Grid lines are used to identify specific architectural features and materials across the elevation.